

# Public notice

## ROAD TRAFFIC REGULATION ACT 1984 – SECTION 14(2)

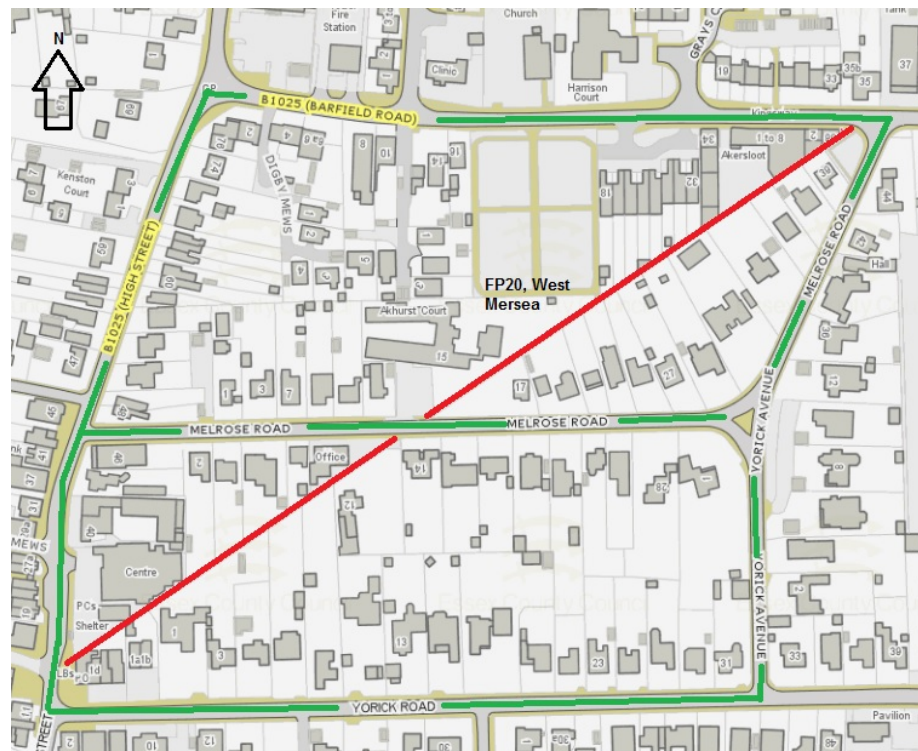
### Temporary Closure of Footpath 20, West Mersea

**NOTICE IS HEREBY GIVEN** that from the date specified below, the Essex County Council has temporarily closed to all traffic under Section 14(2) of the Road Traffic Regulation Act 1984, as amended, that length of Footpath 20, West Mersea in the Borough of Colchester, from its junction with High Street to Melrose Road and from its junction with Melrose Road to its junction with Bardfield Road (entire length) (as highlighted red on below plan).

The closure is scheduled to commence on 7 December 2020 for up to 5 days and is required for the safety of the public and workforce while necessary and expedient resurfacing works are undertaken.

The alternative route for pedestrians will be via footways on surrounding roads as highlighted green.

Essex County Council  
Network Assurance  
A2 Annexe,  
Seax House,  
Victoria Road  
South,  
Chelmsford,  
Essex  
CM1 1QH



Telephone: 0345 603 7631  
Website: [www.essex.gov.uk/highways](http://www.essex.gov.uk/highways)  
**DATE:** 7 December 2020