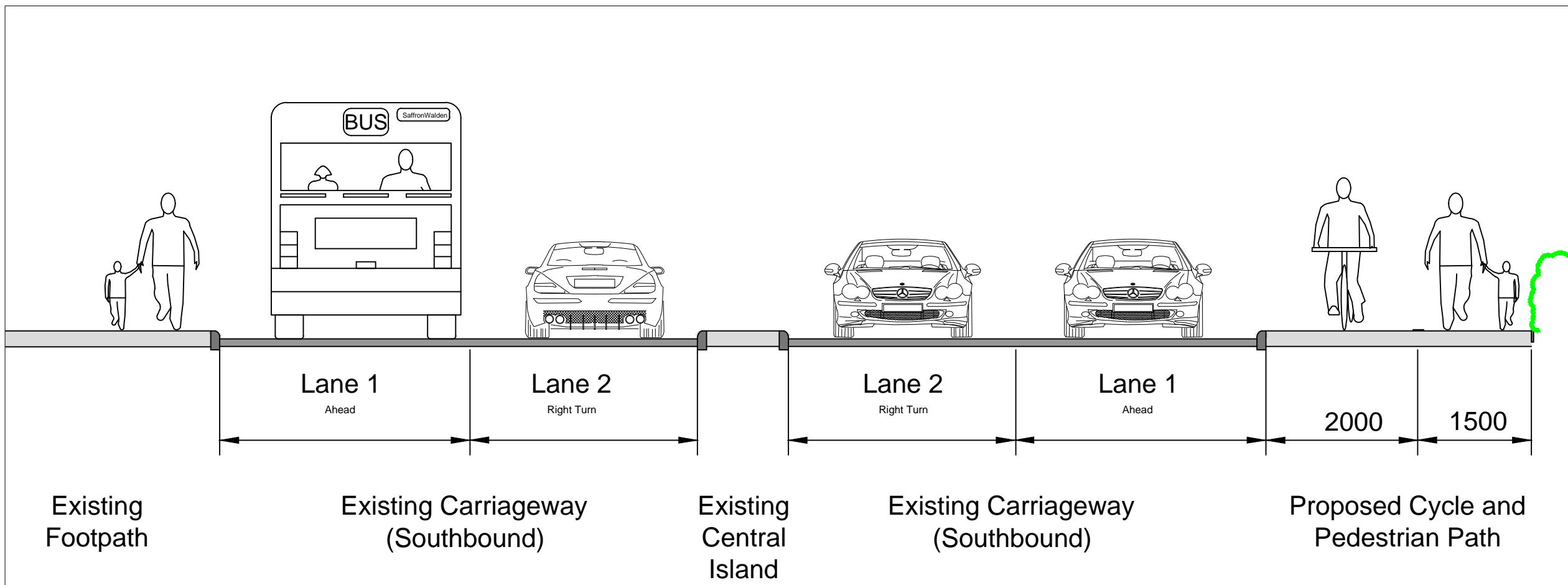
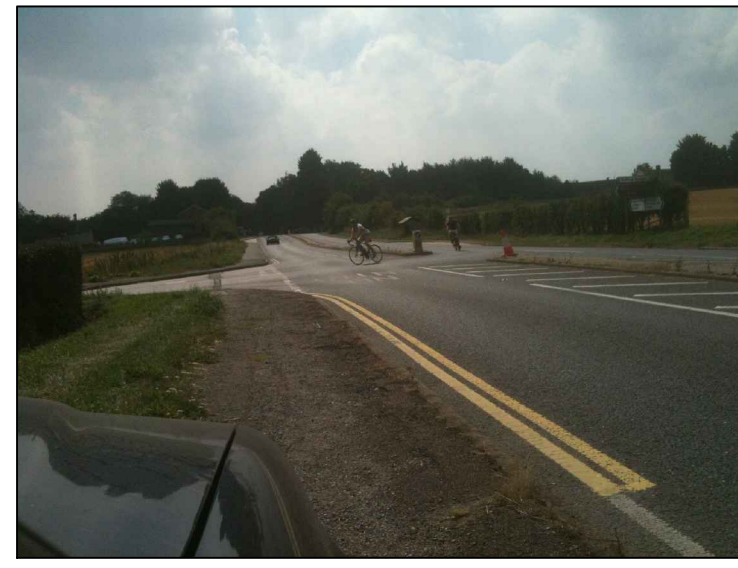
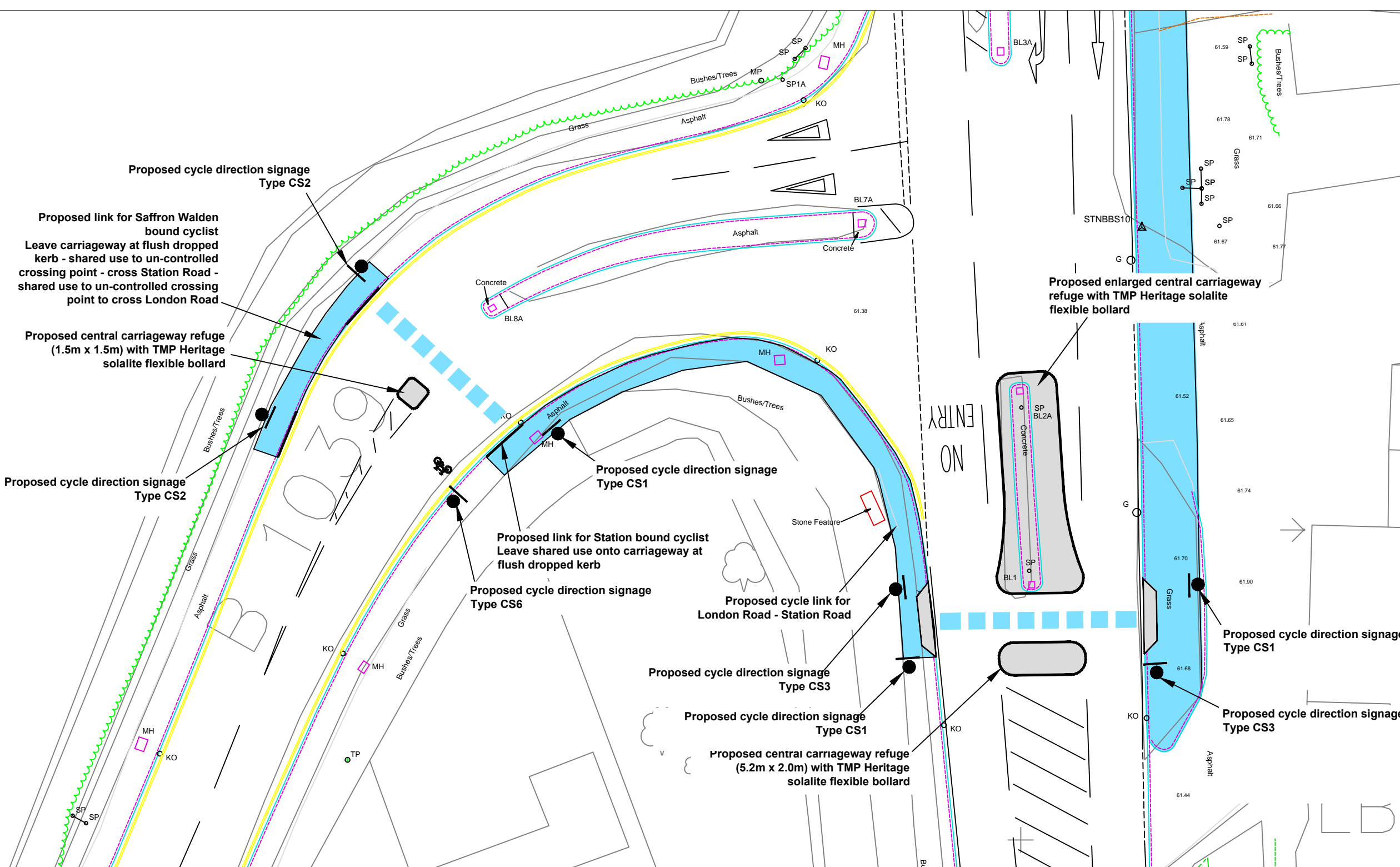


**Cycle and Pedestrian Path Construction**  
 20mm depth AC 6 dense surface concrete 100/150 to EN13108-1  
 50mm depth AC 20 dense binder course 100/150 to EN13108-1  
 100mm depth cement bound granular material class B  
 75mm depth granular type 1 material

**TYPICAL ISLAND CONSTRUCTION**  
 (NOT TO SCALE)



**SECTION A-A: LONDON ROAD**  
 (NOT TO SCALE)



**CYCLE CROSSING FACILITY - UN-CONTROLLED**  
 1:250

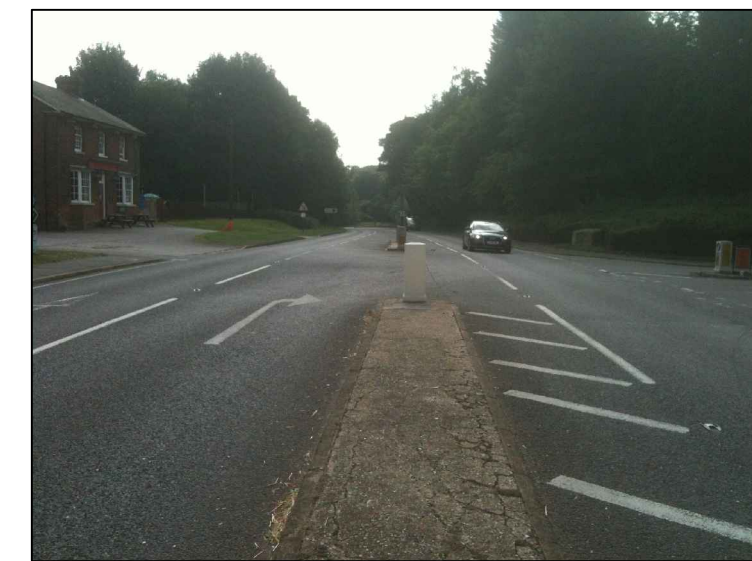
This map is reproduced from Ordnance Survey material with the permission of Ordnance Survey on behalf of the Controller of Her Majesty's Stationery Office © Crown Copyright. Unauthorised reproduction infringes Crown Copyright and may lead to prosecution or civil proceedings. Essex County Council, 100019602, 2014

60.0m

LONDON ROAD

Shelter

A A

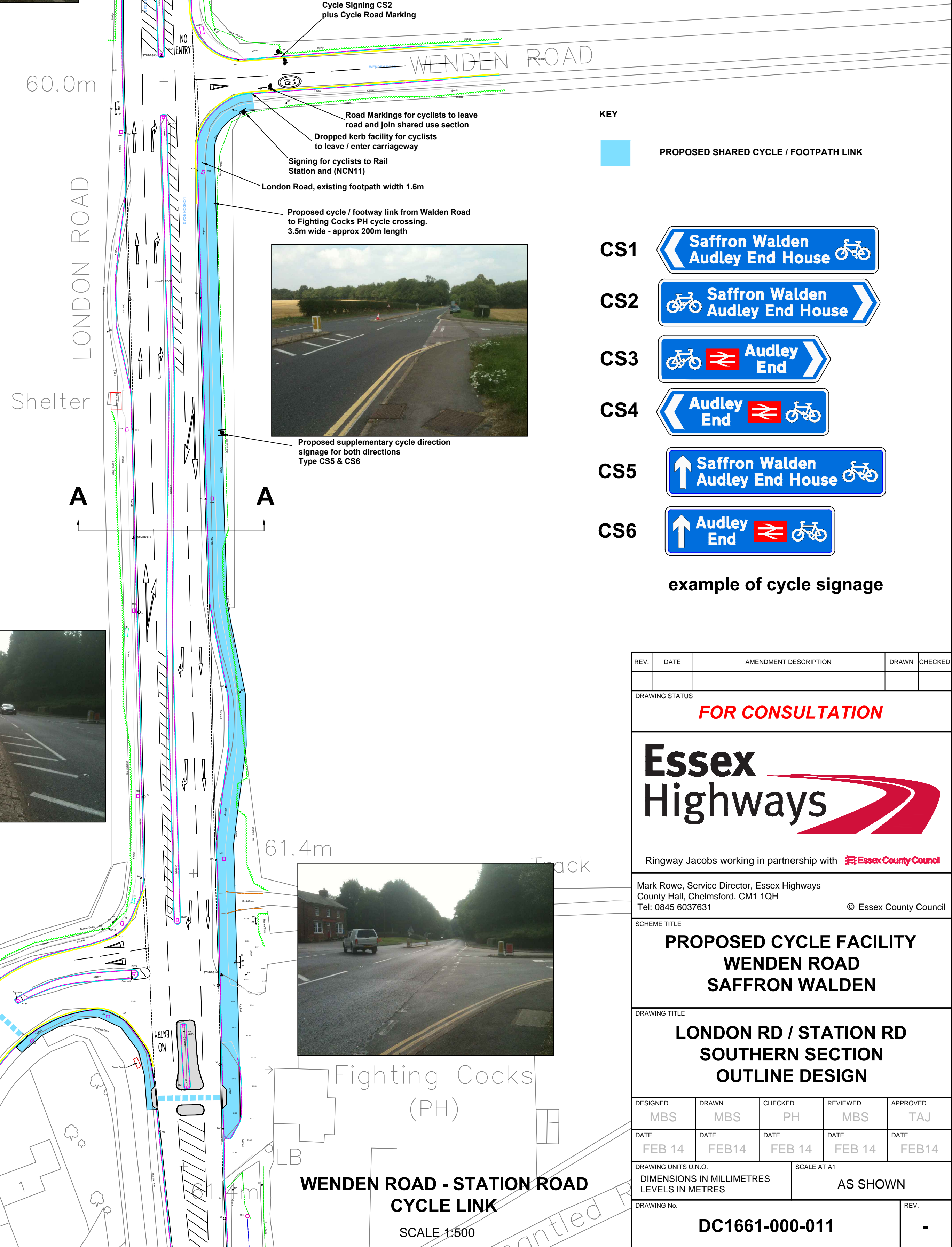
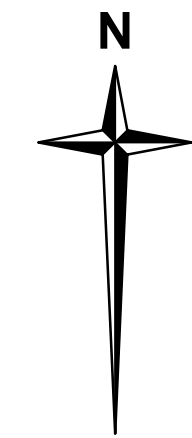


61.4m



**WENDEN ROAD - STATION ROAD**  
**CYCLE LINK**

SCALE 1:500



**KEY**  
 PROPOSED SHARED CYCLE / FOOTPATH LINK

- CS1 Saffron Walden Audley End House
- CS2 Saffron Walden Audley End House
- CS3 Audley End
- CS4 Audley End
- CS5 Saffron Walden Audley End House
- CS6 Audley End

example of cycle signage

REV.	DATE	AMENDMENT DESCRIPTION	DRAWN	CHECKED

**FOR CONSULTATION**



Ringway Jacobs working in partnership with Essex County Council  
 Mark Rowe, Service Director, Essex Highways  
 County Hall, Chelmsford, CM1 1QH  
 Tel: 0845 6037631  
 © Essex County Council

**PROPOSED CYCLE FACILITY**  
**WENDEN ROAD**  
**SAFFRON WALDEN**

**LONDON RD / STATION RD**  
**SOUTHERN SECTION**  
**OUTLINE DESIGN**

DESIGNED	DRAWN	CHECKED	REVIEWED	APPROVED
MBS	MBS	PH	MBS	TAJ
DATE	DATE	DATE	DATE	DATE
FEB 14	FEB 14	FEB 14	FEB 14	FEB 14

DRAWING UNITS U.N.O. DIMENSIONS IN MILLIMETRES LEVELS IN METRES SCALE AT A1 AS SHOWN

DRAWING NO. **DC1661-000-011**