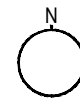


File location: \\UKBR\STCS\PP000\1\06 External Works\S278_002 - BYUK - Chemsford_Essex06 - Drawings Series 101ECC-15-VIC Consultation drawing - 20150519.dwg User:Anhhoa Gomez Time: 19 May 2016 14:38:42



SAFETY, HEALTH AND ENVIRONMENTAL INFORMATION

In addition to the hazards/risks normally associated with the types of work detailed on this drawing, note the following:

CONSTRUCTION	-
MAINTENANCE / CLEANING	-
DECOMMISSIONING / DEMOLITION	-

It is assumed that all works will be carried out by a competent contractor working, where appropriate, to an approved method statement

Key:

Existing footway or traffic island	
Existing Carriageway	
New f/w drawpit	
New f/w tactile paving	
New signal controller	
Existing mini feeder pillar	
New traffic signal poles	
New road studs	
Carriageway Resurfacing	

Notes:

- All road marking within the carriageway resurfacing hatch to be relayed as per existing

REV	REV. DATE	PURPOSE OF REVISION	MB	NM	CM
01	18.05.2016	INTERNAL REVIEW			



Project
7N34 A1099 VICTORIA STREET
(NORTH OF DUKE STREET)
CHELMSFORD, ESSEX

Drawing Title
CONSULTATION DRAWING
VICTORIA ROAD
PUFFIN SIGNAL APPROACH
DRAWING 1 OF 1

Drawing Status

Scale	1:250	DO NOT SCALE
Ringway Jacobs No.	ECC-15	
Client No.	ECC-15	
Drawing Number	ECC-15-VIC-100-001	Rev 01

This drawing is not to be used in whole or part other than for the intended purpose and project as defined on this drawing. Refer to the contract for full terms and conditions.