

**MALDON DISTRICT
LOCAL HIGHWAYS PANEL
MEETING – 18 OCTOBER 2013**

Council Chamber, Maldon District Council Offices, Princes Road, Maldon – at 9.00am

MINUTES

Present:

Representing Essex County Council – Councillors R L Bass (Chairman), and Mrs P A Channer

Representing Maldon District Council – Councillors A J Cussen, F A Delderfield, Miss M R Lewis, and Mrs M Thompson

Officers: H Neve (Area Co-ordinator), J Simmons (Liaison Officer), J Hill (Senior Road Safety Engineer) and P Wright (Design and Consultancy Manager), Essex County Council.

1. Apologies for absence

Apologies for absence were received from Councillors R G Boyce (Essex County Council) and R Pratt (Maldon District Council).

2. Minutes of Meeting – 14 June 2013

RESOLVED that the Minutes of the meeting of the Panel held on 14 June 2013 be approved and confirmed.

In agreeing the Minutes, Councillor F A Delderfield made the following comments:

Minute 6 – Programme of Works 2013-14

The monthly update to be circulated to Panel members had not been received.

Minute 9 – Highways Rangers Work Summary

The updated summary had not been circulated to Panel members prior to the meeting.

3. Presentation from Jenny Hill of the Essex County Council Road Safety Team on the issue of road safety audits associated with schemes

Jenny Hill gave Members an overview of road safety audits/assessments undertaken as part of the design phase of road schemes. A copy of the hand out provided to members of the Panel is attached as Appendix 1 to these Minutes.

In response to a question, the Officer advised that where there may be a more cost effective method of design, this would be suggested to the Design Team. The Panel was also advised that the road safety assessment reports are not routinely published but can be made available to Members or the public on request. It was noted that specific safety measures relating to equestrians included the installation of Pegasus crossings near bridleways and ensuring adequate clearance and visibility.

The Chairman suggested that the Road Safety Team should receive details of the Approved Works Programme and schedule their road safety audit work accordingly.

The Panel thanked Jenny Hill for a helpful and informative presentation.

The Chairman agreed to a variation of the order of business to move Agenda Item 4 Approved Works Programme to later on the agenda to allow Peter Wright, Design and Consultancy Manager (Essex County Council) to attend the meeting for that item.

4. Potential Schemes List

It was advised that items on this list were for the Panel's consideration and recommendation for funding. Any approved would be moved to the Approved Works Programme and be subject to Cabinet Member approval.

The Chairman advised that due to the existing programme of work across the County, any schemes recommended by the Panel now were unlikely to be programmed during the 2013/14 financial year and instead would be programmed for 2014/15. The Panel was therefore advised that any further recommendations should be limited to feasibility studies and any urgent schemes to bring to the attention of the Cabinet Member.

The Chairman also advised that contrary to recent press reports, there had not been a reduction in budgets for highways works relating to schemes approved by Local Highways Panels. The budget relating to unspent allocations had been reviewed with a view to it being used for other highways works across the County and the decision was currently subject to call in procedures. This was mainly because many Panels had not agreed their Approved Works Programme early in the financial year which had led to schemes not being programmed in and that lead time is needed for design and audit work. The Chairman confirmed that he always quotes Maldon District Council's Local Highways Panel as an example of good practice for agreeing this programme early in the financial year.

The Panel discussed the need for overgrowing vegetation to be cut where it impedes vision and covers signage across the District. The Chairman asked that Officers work with Parish Councils to determine ownership of highway verges to enable Notices to be served under Section 79 of the Highways Act to enforce this requirement and for charges to be made to the landowners should the Highways Rangers have to undertake this work on their behalf.

It was noted that from the £75K allocated to cycling schemes £20K remained and that the Cycling Team should consider what can be implemented within this remaining budget.

The agreed actions for each scheme on the Potential Schemes List are shown at Appendix 2 to these Minutes.

5. Approved Works Programme

Officers distributed the Approved Works Programme which contained more detailed scheme descriptions and allocated budgets for schemes. The agreed actions for each scheme on the Approved Works Programme are shown in Appendix 3 to these Minutes.

The Chairman requested that a further report be provided to him for circulation to Panel members within a month of the meeting on the following schemes:

- LMAL005001 Woodham Road, Stow Maries (A)
- LMAL005002 Woodham Road, Stow Maries (B)
- LMAL006001 Spital Road, Maldon
- LMAL005004 Oak Corner Shelter
- LMAL002014 East Street, Tollesbury
- LMAL002017 Braxted Park Road j/w Maldon Road, Great Braxted
- LMAL001006 B1021 Southminster Road/Asheldham, Green Lane to Southminster Road
- LMAL002026 Walden House Road, Great Totham

With regard to scheme DC1702 Maypole Road, Wickham Bishops – extension of 30mph speed limit, the Chairman declared an interest in this scheme as he lived in Maypole Road and would take no part in the discussion of this item.

With regard to schemes DC1776 Summerhill/Burnham Road, Althorne – junction improvement road markings and Summerhill, Althorne – Speed Indicator Device (SID) post, Councillor Mrs P A Channer declared an interest as she lived in the road.

During discussion of schemes DC1701 East Street, Tollesbury, DC1703 Braxted Park Road j/w Maldon Road, Great Braxted, and DC1746 B1021 Southminster Road/Asheldham, Green Lane to Southminster Road the Panel expressed concern that these had not been scheduled for completion earlier in the financial year as they had been approved in April. Officers responded that it was anticipated that these schemes would be completed before the end of the financial year and that a Scheduling Engineer had recently been recruited to improve efficiency in batching and scheduling schemes agreed by the Panel.

6. Section 106 Funding

The Panel received and noted a summary of the present position regarding monies arising from Section 106 agreements.

7. Highway Rangers Work Summary

The Panel received and noted a summary of the work from August to September 2013.

The Panel discussed the need for a more systematic approach to verge clearance and the use of the newly purchased flail. An emphasis should be placed on areas where vegetation impedes signage and sight lines on left hand turns in the road.

It was agreed that a report be presented to the next meeting of the Panel on the arrangements for verge cutting within the contract with Essex County Council with a

view to using remaining revenue funding to supplement the current contract to improve verge clearance.

8. Items Requested by Panel Members

1. Stow Maries – 30mph speed limit – at the request of Councillor Mrs P A Channer it was agreed that an update would be provided on this scheme.
2. Head Street, Church Street and Fish Street, Goldhanger - introduction of 20mph speed limit – at the request of Goldhanger Parish Council it was agreed that an update would be provided on this scheme.

The meeting closed at 11.40 am.

ESSEX HIGHWAYS - ROAD SAFETY AUDIT:

What is a Road Safety Audit?

- A process for checking the safety of a wide range of road schemes.
- It identifies potential road safety hazards associated with the design of road schemes and makes practical recommendations to eliminate or minimise them.
- Emphasis on all users including pedestrians, cyclists, people with disabilities, elderly road users – look at scheme from their point of view.
- Not:
 - A 'technical check' on the design
 - A check of compliance with design standards
 - An assessment of the safety benefits of the scheme

Why do we audit schemes?

- To ensure that schemes operate as safely as practicable.
- Consider the safety of all road users.
- To minimise the occurrence and severity of road traffic collisions.
- Improve the awareness of safe design practices by design, construction and maintenance staff.

Who carries out Safety Audits?

- Must be independent of the design team.
- At least two people.
- Others may attend if required: highway engineer/road safety officer/police/specialist/maintenance.
- Safety engineering expertise very important.

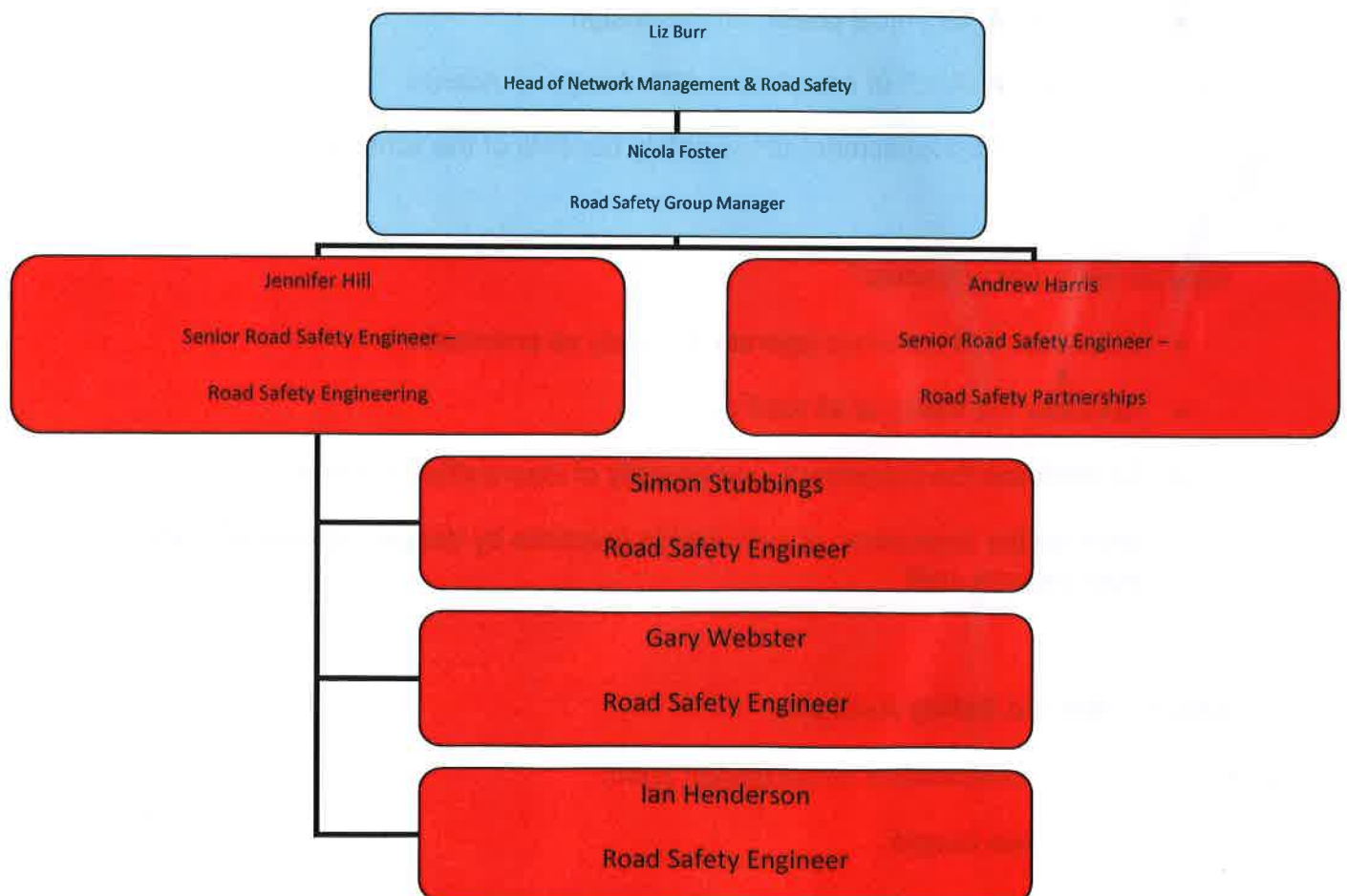
- Need to be qualified to Design Manual for Roads & Bridges Highways Directive 19/03.

Highways Agency Certified Certificate of Competency – required for Audits on Trunk Roads

Society of Road Safety Auditors (SoRSA – technical branch of the Chartered Institution of Highways & Transportation CIHT)

Who undertakes Safety Audits for Essex Highways?

Road Safety Engineering Team:



What do we Safety Audit?

- 1) All highway schemes on the County Network including new developments
- 2) Maintenance schemes – only if they involve additional highway works
- 3) Temporary traffic management schemes not conforming to Chapter 8 of the Traffic Signs Manual

Various Stages of Safety Audits:

Design Stage

- Stage F – Scheme concept
- Stage 1 – Completion of preliminary design
- Stage 2 – Completion of detailed design
- Stage 1/2 - Combined for minor schemes

Post Construction:

- Stage 3 – Completion of scheme (Police/maintenance can attend).

Monitoring Phase:

- Stage 4 – (a) 12 and (b) 36 months monitoring

Safety Assessments:

Carried out instead of Stage 2 on smaller changes to the existing road layout.

The Audit Process:

- Design team issues audit brief
- Audit team examines scheme drawings/details/info - may contact Designer to clarify any points
- Site visit - Look at needs of different road users
- Check lists (see examples attached)
- Check control data/standards

- Produce report – see examples

What do we look for when undertaking a Safety Audit?

- Mistakes
- How all road users will cope at all times and in all conditions
- Interaction between design elements
- Opportunities to include collision reducing elements

What is the benefit of doing Audits?

- Cost of an audit between £150-900
- It is estimated that 1 audit saves 1 casualty per year per scheme
- Current average cost of a collision: £104, 720

Any queries?

Roadsafety.audit@essexhighways.org

Jenny.hill@essexhighways.org Tel: 01245 342902

**Road Safety Audit
Junctions**

<p>Roundabouts Deflection Visibility (approach/exit) Advance signing/road markings Illumination Entry angles Approach gradients Anti-skid Adverse camber Vegetation on roundabout</p>	<p>Cycle friendly Pedestrian facilities Lane space Drainage Motorcycle friendly (covers) Flaring Approach speeds Refuges/islands Wide circulatory area – can't exit</p>
<p>Traffic signals Pedestrian/cycle phases Guardrails Phasing/intergreens etc Location of signals Anti-skid Tactile paving/dropped kerbs Advance signing/road markings Clearance to poles and heads</p>	<p>Visibility of signal heads Drainage Advance stop lines Pedestrian friendly Cycle time/double cycle ped phase See-through of signal heads Long hoods/louvers Closely/associated secondaries</p>
<p>Priority Junctions Visibility – on all aspects Sight lines Advance signs and road markings Dropped kerbs Speed table/raised junctions Speed limits</p>	<p>Cyclists/pedestrians Refuges, bollards Lighting Anti-skid Coloured surfacing Provision for right turners</p>

Road User requirements

<p>Pedestrians Location of crossing points Desire lines Guardrailing Refuges/size Pedestrian signal stage Roadworks</p>	<p>Type of user Type of pedestrian crossing Pedestrian routing strategy Footway width Street furniture location</p>
<p>Cyclists Cycle lanes Shared/segregated use Correct signing (position of signs) Toucan crossings Signing height Position of street - furniture/cover/gullies Refuges</p>	<p>Tactile – corduroy Flush drop kerbs Clear signing Routing strategy Clear start/end Car parking Subway dimensions</p>
<p>Children Guardrail Refuges/size Sheep pen crossings On-street parking conflicts</p>	<p>Location/existence of school crossing patrols Assisted crossing Safe routes to school</p>
<p>People with disabilities Tactile paving Ramps/dropped kerbs</p>	<p>Audible signals/knurled knobs Position of post/push button</p>
<p>Equestrians Adequate signing Pegasus crossing Surfacing Dimensions of subway</p>	<p>Refuges Shared use peds/cyclists Greater visibility</p>

Other Features

Street Lighting Consistency of light spread Illuminance Position of columns Maintenance Type of lamp columns	Nearby airports – surrounding environment or overpasses Black holes Guardrail/safety fence if necessary Pedestrian subway lighting
Safety Fence Use of visirail Pedestrian desire lines – gaps Protection of street furniture To standards? Maintenance	Visibility Clearance from kerb Plant pots/obstructions Type Termination section type
Signs and Markings Correct sign in correct location Visibility Reflectivity/lighting – backing Reflective markings To standards? X height Maintenance	Mounting height Vegetation Position behind guardrails Road markings on bends – motor cycle friendly Correct destinations Skid resistance of markings

Pedestrian Facilities

Refuges Width Type of kerb Lane width Paving Keep left bollards/clearance Guardrail Siting	Signing/lining Clearance to street furniture Lighting columns Visibility Refuge beacons Tactile paving
Zebra Visibility Location/desire lines Lighting Backing boards on belishas Crossing width/refuges Drainage Skid resistance Sun position	Traffic speed Buildouts/signing Advance warning signs Guardrail Tactile paving Raised crossing Maintenance
Pelican/Puffin/Toucan Tactile paving Signal head rotation/position Green man time /intergreen Dropped kerbs Roadmarkings Control box position Amount of stagger on puffs Conflict of peds/cyclists on toucan	Ramp gradient Drainage Guardrail Anti-skid Staggered crossing No audible tones – only tactile Distance from side roads Desire lines vs safety
Pedestrian Stages at Traffic Signals Cycle time - wait for pedestrians Intergreen Staggered crossings – facing traffic Guardrail	Signal pole positions Tactile paving Footway widths Push button/green man positions

Potential Schemes List – agreed actions at Local Highways Panel on 18 October 2013 (see Minute 4)

APPENDIX 2

	Reference	Location	Scheme	Comments/Action
1	LMAL132036	Wantz Road, Maldon (High Street to Queens Road)	One way system	Agreed to recommend £420 for two speed surveys to assist validation. Schedule incorrectly refers to North Essex Parking Partnership (NEPP) instead of South Essex Parking Partnership (SEPP).
2	LMAL132053	King Street, Maldon	20 mph speed limit	Agreed to recommend £210 for a speed survey to assist validation
3	LMAL132068	Midguard Way, Maldon	Measures to stop cyclist/pedestrian conflict	Agreed to recommend £500 for design work
4	LMAL132044	Tolleshunt D'Arcy Road, Tolleshunt Major	Verge protection	Agreed to recommend £500 for design work
5	LMAL132045	The Street (Snows Corner to Great Totham Road), Wickham Bishops	Pedestrian refuge island/pram crossing	Agreed to recommend £890 for Stage 1 Degree of Pedestrian Conflict Survey (PV ²) to assist validation
6	LMAL132046	Church Road and Kelvedon Road, Wickham Bishops	Additional two Vehicle Activated Signs (VAS) poles required	Agreed to combine with scheme 7 below (Church Road, Wickham Bishops) and recommend £420 for two speed surveys to assist validation
7	LMAL132047	Church Road, Wickham Bishops	Extension of 30 mph speed limit to junction with Mope Lane	See scheme 6 above (Church Road and Kelvedon Road, Wickham Bishops)
8	LMAL131007	The Street & Colchester Road, Heybridge (Nr Goings Wharf and Stock Chase)	SLOW road markings	Agreed to recommend £500 for design work
9	LMAL132051	Imperial Avenue, Mayland	Footway/parking bay improvements.	Currently being validated, waiting on results of highway boundary search. Agreed that the scheme remain on the Potential Schemes List to be considered for programming at a future meeting
10	LMAL132052	New Hall Lane j/w Mundon Road, Mundon	Signage improvements	Validation undertaken with recommendation of no further action necessary. Agreed to refer back to the Parish Council for their feedback. To remain on the Potential Schemes List awaiting Parish Council feedback
11	LMAL132048	Main Road j/w Burnham Road, Mundon	Improvements to sight line of Give Way Signage	Validation undertaken and vegetation cut back. Agreed to refer back to the Parish Council for their feedback. To remain on the Potential Schemes List awaiting Parish Council feedback

	Reference	Location	Scheme	Comments/Action
12	LMAL132050	Maldon Road/The Street/Bradwell Road, Steeple	Traffic management improvements	Agreed to recommend £630 for three speed surveys to assist validation
13	LMAL132049	The Drive j/w Steeple Road, Mayland	Junction improvements	Validation undertaken and improvements would require feasibility study to include surveys and preliminary design. Agreed that the scheme remain on the Potential Schemes List to be considered for programming at a future meeting
14	LMAL132042	Grange Avenue j/w Steeple Road, Mayland	Junction improvements	Agreed to recommend £420 for two speed surveys to assist validation
15	LMAL132044	Maldon Road, Bradwell on Sea (The Garage to Bacons Chase)	Speed reduction	Agreed to recommend £420 for two speed surveys to assist validation
16	LMAL132069	B1010 Burnham on Crouch to Cold Norton.	Traffic management improvements	Agreed to ask the Road Safety Team to look at the scheme

Minor Schemes: None

Small Works: None

Bus Stop/Route Improvements: None

School Crossing Patrol Sites: None

Essex Intelligent Traffic Systems: None

Cycling Schemes:

	Reference	Location	Scheme	Comments/Action
1	LMAL135008	Park Drive, Maldon	Widening of footway by 1m to link existing widened footway to leisure facilities	Agreed that the scheme remain on the Potential Schemes List to be considered for programming at a future meeting

Public Rights of Way: None

Casualty Reduction Schemes:

	Reference	Location	Scheme	Comments/Action
1	LMAL131008	B1022 Colchester Road j/w Mountains Road, Great Totham	Signing and road marking improvements at the junction	Agreed to recommend £5,000 for signing and road marking improvements at the junction
2	LMAL131009	B1018 Burnham Road j/w Green Lane, Althorne	Signing and road marking improvements at the junction	Agreed to recommend £3,500 for signing and road marking improvements at the junction
3	LMAL131010	B1012, Lower Burnham Road nr North Fambridge Hall Wood, Fambridge	Re-locating field entrance	Agreed that the Road Safety Team examine what can be done to improve sight lines by removing vegetation at this site and also along the entire stretch of the B1012 Lower Burnham Road. Agreed not to progress with the scheme to relocate the field entrance

Traffic Survey Results - Automatic Traffic Counts:

	Reference	Location	Scheme	Comments/Action
1	LAML	B1018 The Street, Latchingdon	Request for VAS sign	Agreed not to progress with the proposed scheme as surveyed speeds did not meet the criteria required for installation of VAS signs. Officers to report back to the Parish Council
2	LAML	B1018 Burnham Road, Latchingdon	Request for VAS sign	Agreed not to progress with the proposed scheme as surveyed speeds did not meet the criteria required for installation of VAS signs. Officers to report back to the Parish Council
3	LAML	Downhall Road/Trusses Road, Bradwell on Sea	Request for speed reduction measures in the approach road to the Bradwell Power Station	Agreed not to progress with the proposed scheme as the reported survey did not evidence high speeds at this location. Officers to report back to the Parish Council

Degree of Pedestrian Conflict Survey:

	Reference	Location	Scheme	Comments/Action
1	LAML	Southminster – B1021 North Street	Degree of Pedestrian Conflict Survey	CDPV ² measured as 0.07 x 10 ⁸ . Agreed not to recommend the installation of a controlled crossing as the value of the CDPV ² was below the criteria required
2	LAML	Southminster – B1018 High Street	Degree of Pedestrian Conflict Survey	CDPV ² measured as 0.05 x 10 ⁸ . Agreed not to recommend the installation of a controlled crossing as the value of the CDPV ² was below the criteria required

Feasibility Studies and Draft Plans:

	Reference	Location	Scheme	Comments/Action
1	LMAL002008	Mill Road, Maldon	Bus priority measures feasibility study	Agreed to move to formal consultation, ensuring that Maldon District Council, and specifically the Conservation Officer, is included.
2	LMAL008005	D’Arcy Road, Tolleshunt Knights	Footway feasibility study	Agreed to recommend £1,000 to install new “Pedestrians in the Road Ahead” warning sign.
3	LMAL003004	Wycke Hill, Maldon	Pedestrian refuge island feasibility study	Agreed to recommend £16,000 for an illuminated pedestrian island and dropped kerbs. It was also agreed that this scheme should be flagged up to be taken into account as part of the master planning sessions for the Local Development Plan.
4	LMAL002017	Braxted Park Road j/w B1022 Maldon Road, Great Braxted	Junction verge improvements draft plan	During discussion of this item, Councillor F A Delderfield commented that vehicles for sale along the highway in this location affected the sight lines. Officers would raise this issue with the Trading Standards Team to request enforcement action. Agreed that the potential LHP scheme will be considered as part of a Casualty Reduction Scheme report which will be presented to a future meeting of the Panel.

	Reference	Location	Scheme	Comments/Action
5	LMAL133006	B1022 Maldon Road, Great Totham	Footway improvement - feasibility and road safety assessment	During discussion on this item Councillor Miss M R Lewis asked if any action can be taken to remove A Frame Boards outside the Farm Shop at this location. Agreed to recommend that the Phase 1 scheme be progressed to detailed design taking into account the results of the road safety assessment and to be reported to a future meeting of the Panel.

	Reference	Location	Scheme Type	Notes	Status
1	LMAL002001	Kelvedon Road j/w Braxted Road, Little Braxted	Kerbing to triangle area	Remove from Approved Works Programme	Complete
2	LMAL002003	Tom Tit Lane, Woodham Mortimer	Signing and SLOW lining works inc. design	Remove from Approved Works Programme	Complete
3	LMAL002004	The Drive, Mayland	Traffic calming – new VAS/SID post	Remove from Approved Works Programme	Complete
4	LMAL001001	A414 / B1418 / B1010 Oak Corner RAB	Casualty reduction measures – sign rationalisation	Remove from Approved Works Programme	Complete
5	LMAL001002	Burnham Road, Woodham Mortimer	Casualty reduction measures – signage/road markings/surface improvements	Remove from Approved Works Programme	Complete
6	LMAL008001	Heybridge 24	PROW – upgrade surface and reinstatement of width. New nearby leisure & residential developments increasing usage but access is poor for all users (pedestrians, cycle & horse riders)	Remove from Approved Works Programme	Complete
7	LMAL003003	London Road, Maldon	Pedestrian guard rail outside school entrance	Remove from Approved Works Programme	Complete
8	LMAL005001	Woodham Road, Stow Maries (A)	Bus shelter/flag	Passenger Transport – checking if schemes are to be cancelled. Should be shown as white, not green. Further report requested for the Chairman.	End date Dec 13
9	LMAL005002	Woodham Road, Stow Maries (B)	Bus shelter/flag	Passenger Transport – checking if schemes are to be cancelled. Should be shown as white, not green. Further report requested for the Chairman.	End date Dec 13
10	LMAL005003	Station Road, Burnham on Crouch	Install metal framed bus shelter		End date Dec 13
11	LMAL008004	41 Burnham on Crouch	PROW – surfacing/clearance of overgrowth. New route following claim.		End date 25/10/13

	Reference	Location	Scheme Type	Notes	Status
12	LMAL006001	Spital Road, Maldon	Parking restrictions to allow improved visibility for School Crossing Patrol	6 month Traffic Regulation Order (TRO) drawing to a close. Further report requested for the Chairman.	End date 31/03/14
13	LMAL003001	Tolleshunt D'Arcy Road / Beckingham Street, Tolleshunt Major	Footway (new)	Initial site geometry issues.	End date 31/03/14
14	LMAL001003	A414 Maldon Bypass - Phase 1	Casualty reduction measures – pedestrian refuge island and associated works.		Phase 1 – civil works 11/4/13. COMPLETE
15	LMAL001003	A414 Maldon Bypass - Phase 2	Casualty reduction measures – pedestrian refuge island and associated works.		Phase 2 – TRO 01/03/14
116	LMAL008003	40 Tillingham	PROW – surfacing/clearance of overgrowth. New route following claim.	Remove from Approved Works Programme	Complete
17	LMAL002002	School Road, Wickham Bishops	Verge works – kerb green outside library	Initial drainage concerns. Safety audit completed.	End date 01/01/14
18	LMAL008002	29/24 Cold Norton / Stow Maries	PROW bridleway stepped ramp at St Stephen's Road. Bridleway goes down embankment which is too steep and unsurfaced and very slippery in wet weather.		End date 15/11/13
19	LMAL002006	High Street / Ship Road, Burnham on Crouch	Signage works/lighting of signs incl. design	Remove from Approved Works Programme	Complete
20	LMAL005004	Oak Corner Shelter	Bus stop improvements – new shelter	Further report requested for the Chairman.	End date Dec 13
21	LMAL002008	Mill Road, Maldon	Bus priority measures – relocation of No Entry point.	Discussed under Minute 5. Agreed to move to formal consultation, ensuring that Maldon District Council, and specifically the Conservation Officer, is included.	End date 15/01/14
22	LMAL002009	Green Lane / Highlands Hill /Foxhall Road, Southminster	Signage review works inc. design		End date 31/03/14

	Reference	Location	Scheme Type	Notes	Status
23	LMALn/a	Rangers equipment	Purchase of flail	Remove from Approved Works Programme	Complete
24	LMAL004001	District Cycling Improvements	Cycling improvements	Scheme was reviewed by programming team and engineers and it was confirmed that it will be delivered this financial year	End date 29/11/13
25	Unknown	Tollesbury - Tolleshunt, D'Arcy Road	Regularise weight limit (advertising)	Remove from Approved Works Programme	Complete
26	LMAL001004	Basin Road Heybridge	VAS installation		End date 31/03/14
27	LMAL008005	D'Arcy Road Tolleshunt Knights	New footway - design	Discussed under Minute 5. Agreed to recommend £1,000 to install new "Pedestrians in the Road Ahead" warning sign.	
28	LMAL003004	Wycke Hill Maldon	Feasibility study for refuge island	Discussed under Minute 5. Agreed to recommend £16,000 for an illuminated pedestrian island and dropped kerbs.	
29	LMAL002007	Little Braxted Lane, Little Braxted	Junction improvement scheme to deter goods vehicles form using route as a short cut (scheme)	Highways Act Section 6 Agreement to work on site now provisional for November 2013. Initial sign off 14/10/12 additional capital funding 08/04/13	End date 29/11/13
30	LMAL002013	Basin Road j/w Goldhanger Road, Heybridge	Dropped kerbs to improve accessibility		End date 27/01/14
31	LMAL002016	Maypole Road Wickham Bishops	Village gateways and SID sockets		End date 31/03/14
32	LMAL001005	Viking Road/Dorset Road/ Wordsworth Road, Maldon	Feasibility study to prevent vehicles parking on verges	Feasibility study ongoing	End date 31/03/14
33	LMAL002015	Maypole Road, Wickham Bishops	Extension of 30 mph speed limit.		End date 12/02/14

	Reference	Location	Scheme Type	Notes	Status
34	LMAL002014	East Street, Tollesbury	Signing and lining works inc. design outside school.	Scheme was reviewed by programming team and engineers and it was confirmed that it will be delivered this financial year. Further report requested for the Chairman	End date 31/03/14
35	LMAL002017	Braxted Park Road j/w Maldon Road, Great Braxted	Verge works to stop parked vehicles affecting sight lines	Scheme was reviewed by programming team and engineers and it was confirmed that it will be delivered this financial year. Further report requested for the Chairman.	End date 31/03/14
36	LMAL001006	B1021 Southminster Rd/Asheldham, Green Lane to Southminster Road	Scoping report for bend improvements	Further report requested for the Chairman.	End date 31/03/14
37	LMAL002029	South Street & Bradwell Road, Tillingham	30 mph carriageway markings at village gateways		End date 31/01/14
38	LMAL002019	Maldon Road, Goldhanger (Design Only)	Bend improvements	Highways Liaison Officer (HLO) supplied information in September 2013.	End date 31/03/14
39	LMAL002020	Witham Road, Tolleshunt Major/Mill Lane/Tudwick Road	Feasibility study looking at junction improvements		End date 31/03/14
40	LMAL002023	Captains Wood Rd, Gt Totham (Design Only)	Junction improvement		End date 31/03/14
41	LMAL002024	Fambridge Road, Maldon/Hazeleigh	Feasibility study into footway		End date 31/03/14
42	LMAL002025	Church Hill, Purleigh	Feasibility study into footpath extension	Councillor Mrs Channer requested that the feasibility study included separate costings for footpath extension and layby works.	End date 31/03/14
43	LMAL002027	Summerhill/Burnham Road, Althorne	Junction improvement- road markings		End date 31/03/14
44	LMAL002028	Summerhill, Althorne	SID post	Requires a speed survey	End date 31/03/14

	Reference	Location	Scheme Type	Notes	Status
45	LMAL002030	Oak Corner/Morrisons RAB Wood Mortimer	Feasibility study into improvements to RAB (dedicated left turn lanes)	Agreed that this should be undertaken in liaison with Planning Officers to coincide with master planning work at this location	End date 31/03/14
46	LMAL002032	Princes Road, Burnham on Crouch	Bollards on footway to improve pedestrian access		End date 31/03/14
47	LMAL002021	Tolleshunt / D'Arcy road, Tolleshunt Major	Verge work improvements outside access to playing field	Scheme was reviewed by programming team and engineers and it was confirmed that it will be delivered this financial year.	End date 31/03/14
48	LMAL002022	Walden House Rd B1022, Gt Totham	Layby to formalise existing parking	From the workshops, further information required and a design brief needs to be compiled. Officer advised this should be possible for completion this financial year.	End date to be amended from 2014/15 delivery
49	LMAL002026	Walden House Rd, Gt Totham	Passing spaces to relieve congestion near school	Scheme needs to be validated. From the workshops, HLO supplied further information on the scheme. Officer advised that design work and the TRO may be possible for completion this financial year. Further report requested for the Chairman.	End date 2014/15 delivery
50	LMAL002031	B1021 Southminster Rd / Green Lane Burnham (Eves Corner)	Signage improvements	Scheme was reviewed by programming team and engineers and it was confirmed that it will be delivered this financial year.	End date 31/03/14
51	LMAL002033	Crouch Road j/w Station Road, Burnham on Crouch	Dropped kerbs to improve accessibility	Scheme was reviewed by programming team and engineers and it was confirmed that it will be delivered this financial year.	End date 31/03/14

	Reference	Location	Scheme Type	Notes	Status
52	LMAL004003	Mill Lane junction leading to Anchorage Hill, Maldon	Cycling infrastructure improvements	HLO provided further information on 22/8/13. Validation completed by cycling team. Design brief to be drawn up. Officer advised this should be possible for completion this financial year.	End date to be amended from 2014/15 delivery
53	LMAL004004	Maldon/Heybridge - 6 locations	Cycling signage improvements	HLO provided further information on 22/8/13. Validation completed by cycling team. Design brief to be drawn up. Officer advised this should be possible for completion this financial year	End date to be amended from 2014/15 delivery
54	LMAL006002	Maldon Primary School, Wantz Road, Maldon	School Crossing Patrol site improvements dropped kerbs	Validation by School Crossing Patrol (SCP) not yet received. Site visit held with SCP lead and further investigation and discussion with SCP Team is required.	End date 2014/15 delivery
55	LMAL002018	Maldon Road, Goldhanger	Traffic calming improvements through village	More detailed report to be presented to next meeting of the Panel.	End date 2014/15 delivery
56	LMAL004002	Maldon Town Cycle Parking - 8 locations	Cycling – cycle parking	HLO provided further information on 22/08/13. Validation completed by cycling team. Design brief to be drawn up. Location details to be circulated to Panel members.	End date 31/03/14
57	LMAL002005	Maldon Road, Langford	Parking deterrent measures – close off unofficial layby with reflective marker posts	Initial sign off 17/07/12 – additional funding awarded £1,340 on 05/06/13	End date 01/02/14
58	LMAL135002	High Street (opp clock tower)	Bus stop improvements – formalise bus stop		End date Feb 14
59	LMAL132036	B1018 Langford Rd, junc Wickham Hall Lane, Wickham Bishops	Unsuitable for Goods Vehicle signs		End date 31/03/14

	Reference	Location	Scheme Type	Notes	Status
60	LMAL132039	Maypole Road, Heybridge	Feasibility study looking at piping ditch	Need to ensure work is undertaken in liaison with ECC Local Flood Team and is not covered by work already scheduled under Surface Water Management Plan	End date 31/03/14
61	LMAL132040	Church Street, Tollesbury	Feasibility study to look at formalising existing parking behind bus stop		End date 31/03/14
62	LMAL003002 LMAL133006	B1022 Maldon Road, Great Totham DESIGN/SCHEME	New footway between Village Hall and Beckingham Road	Initial sign off – 17/07/12. Additional funding required. Safety audit concerns. Existing ditch issues. Discussed under agenda item 4. Agreed to recommend that the Phase 1 scheme be progressed to detailed design taking into account the results of the road safety assessment and to be reported to a future meeting of the Panel.	End date 30/09/13
63	LMAL	The Street & Rectory Lane	Speed survey	Remove from Approved Works Programme	Complete
64	LMAL	B1018 High Street, Southminster	Degree of pedestrian conflict survey	Remove from Approved Works Programme	Complete
65	LMAL	B121 North Street, Southminster	Degree of pedestrian conflict survey	Remove from Approved Works Programme	Complete
66	LMAL	Downhall Road, Bradwell on Sea	Speed survey	Remove from Approved Works Programme	Complete