

Highway Authority Weight Restriction Order Enforcement Policy

This policy explains how Essex Highways will approach enforcement of Weight Restriction Orders and forms part of, and should be read in conjunction with, the Highways Authority Enforcement Policy.

May 2018



Essex County Council

Weight Restriction Order Enforcement Policy

1. About this policy

- 1.1. This policy explains how Essex Highways will approach enforcement of Weight Restriction Orders and forms part of, and should be read in conjunction with, the Highways Authority Enforcement Policy.
- 1.2. The flowcharts on the following two pages outline the process that will be followed when investigating contraventions of both environmental Weight Restriction Orders (put in place to prevent heavy goods vehicles using unsuitable roads on the grounds of safety, noise, pollution, etc.) and structural Weight Restriction Orders (implemented to protect weak bridges, roads and culverts from damage). The fundamental aim of this policy is to ensure a consistent and fair approach to enforcement that reflects the seriousness of the contravention under investigation.

2. Prioritisation

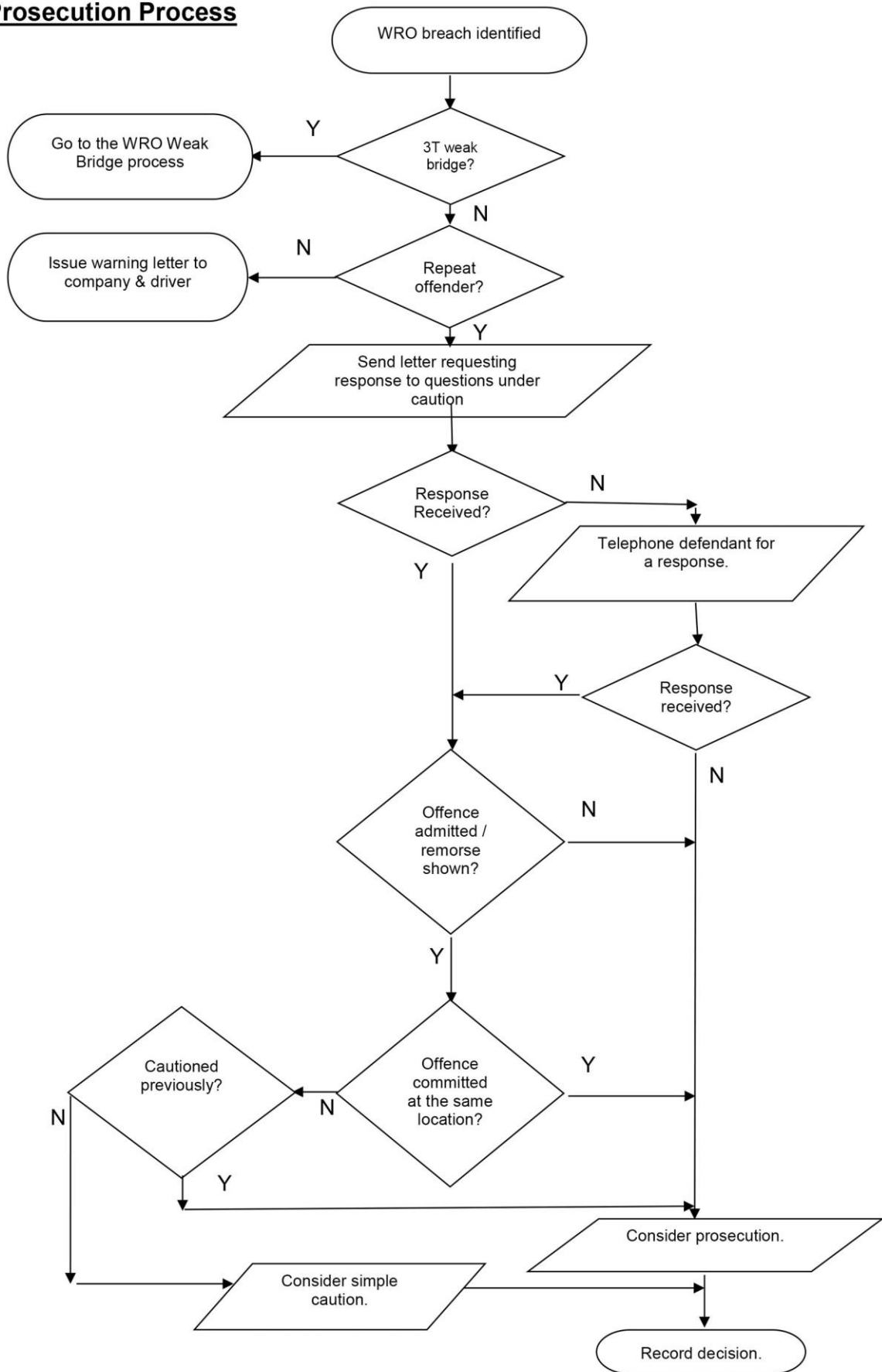
- 2.1. Enforcement activity will be prioritised towards Weight Restriction Orders placed over weak structures.

3. Enforcement Action

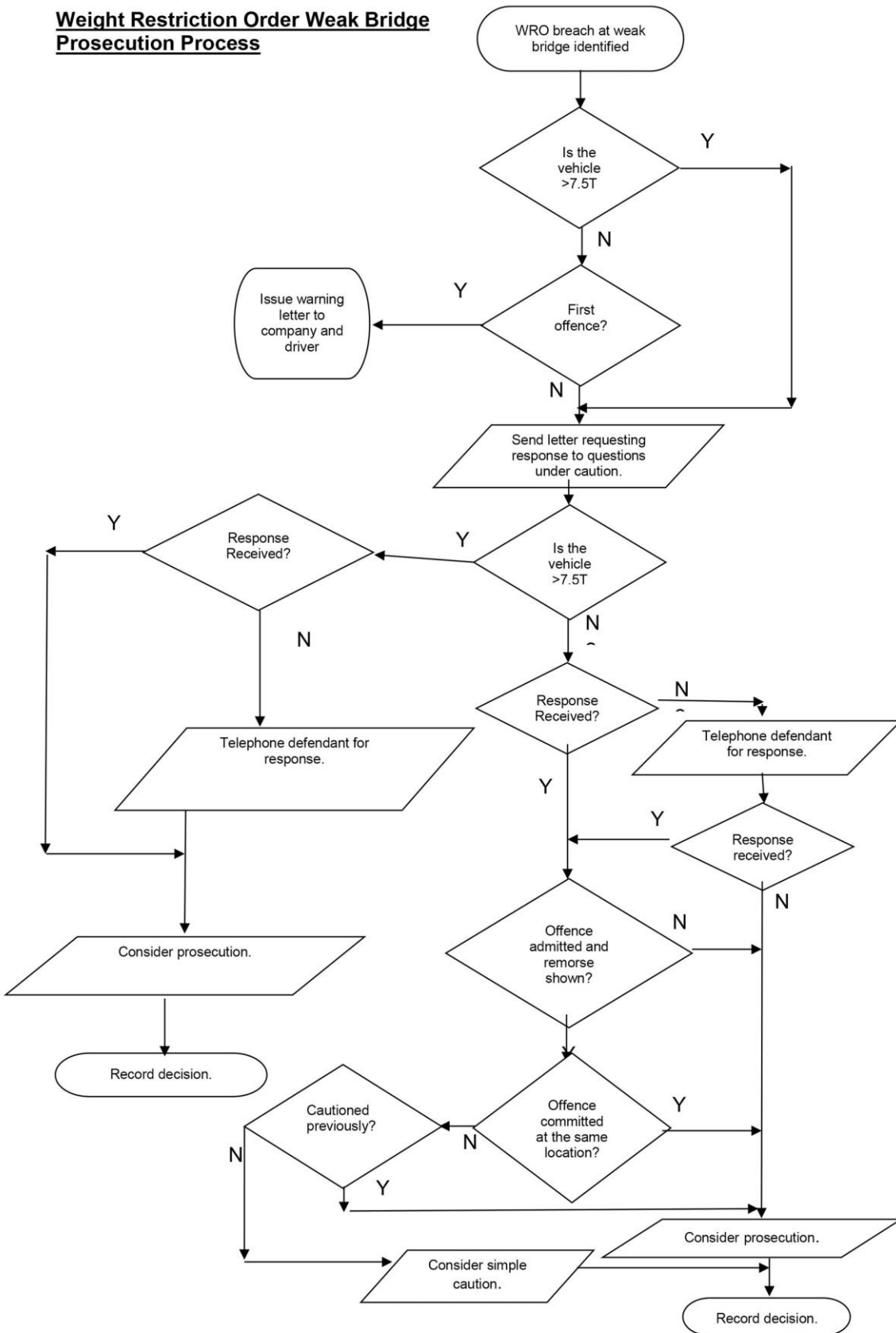
- 3.1. We will only resort to taking formal legal action against drivers who repeatedly breach Weight Restriction Orders. This policy is only varied when a driver of a vehicle with a maximum permissible weight in excess of 7.5 tonnes contravenes a 3.0 tonne structural Weight Restriction Order. In these circumstances consideration will be given to proceeding directly to prosecution due to the seriousness of the contravention.

May 2018

Weight Restriction Order Prosecution Process



Weight Restriction Order Weak Bridge Prosecution Process



This report has been prepared by
Essex County Council Highway Authority

Contact us:

www.essex.gov.uk/highways

0345 603 7631

By post at:

Highways and Transportation

Essex County Council,

County Hall,

Chelmsford,

Essex

CM1 1QH



Essex County Council