

Mildmay Car Park



Cross City Service

To City Centre, ARU and Chelmer Valley Park and Ride

Monday to Fridays

0648 – 0908	0918 – 1648	1659 – 2108
0648, 0708, 0718, 0728, 0736, 0746, 0756, 0806, 0816, 0828, 0838, 0851, 0900, 0908	0918, 0928 then every 10 minutes until 1638, 1648	1659, 1710, 1720, 1730, 1742, 1754, 1806, 1818, 1828, 1838, 1853, 1908, 1923, 1938, 1953, 2008, 2038, 2108

Saturdays

0718 – 0808	0818 – 1808	1828 – 2008
0718, 0738, 0758, 0808	0818, 0828 then every 10 minutes until 1758, 1808	1828, 1848, 1908, 1928, 1948, 2008

No service Sundays, public or bank holiday Mondays

Sandon Loop Service

To City Centre and Sandon

(Mon-Fri peak hours and Saturday early morning only)

Monday to Fridays

0741 – 0846	1619 – 1800
0741, 0751, 0801, 0813, 0823, 0833, 0846	1619, 1631, 1641, 1655, 1705, 1723, 1736, 1739, 1748, 1800

Saturdays

0708, 0728, 0748

No service Sundays, public or bank holiday Mondays

Cars can still exit the site after closing either automatically through the barrier system or by calling Chelmsford City Council's CCTV Control Centre on 01245 606 210.

Adult fares (16+ years)

- **£3.60** day ticket (Mon-Fri)
- **£1.50** day ticket (Sat)
- **£18.00** weekly
- **£66.50** monthly
- **£5.00** Off-peak Group Fare (weekday after 1000) **£3.50** at weekends/Holidays
- **£1.00** Short-hop fare (ARU - City Centre)

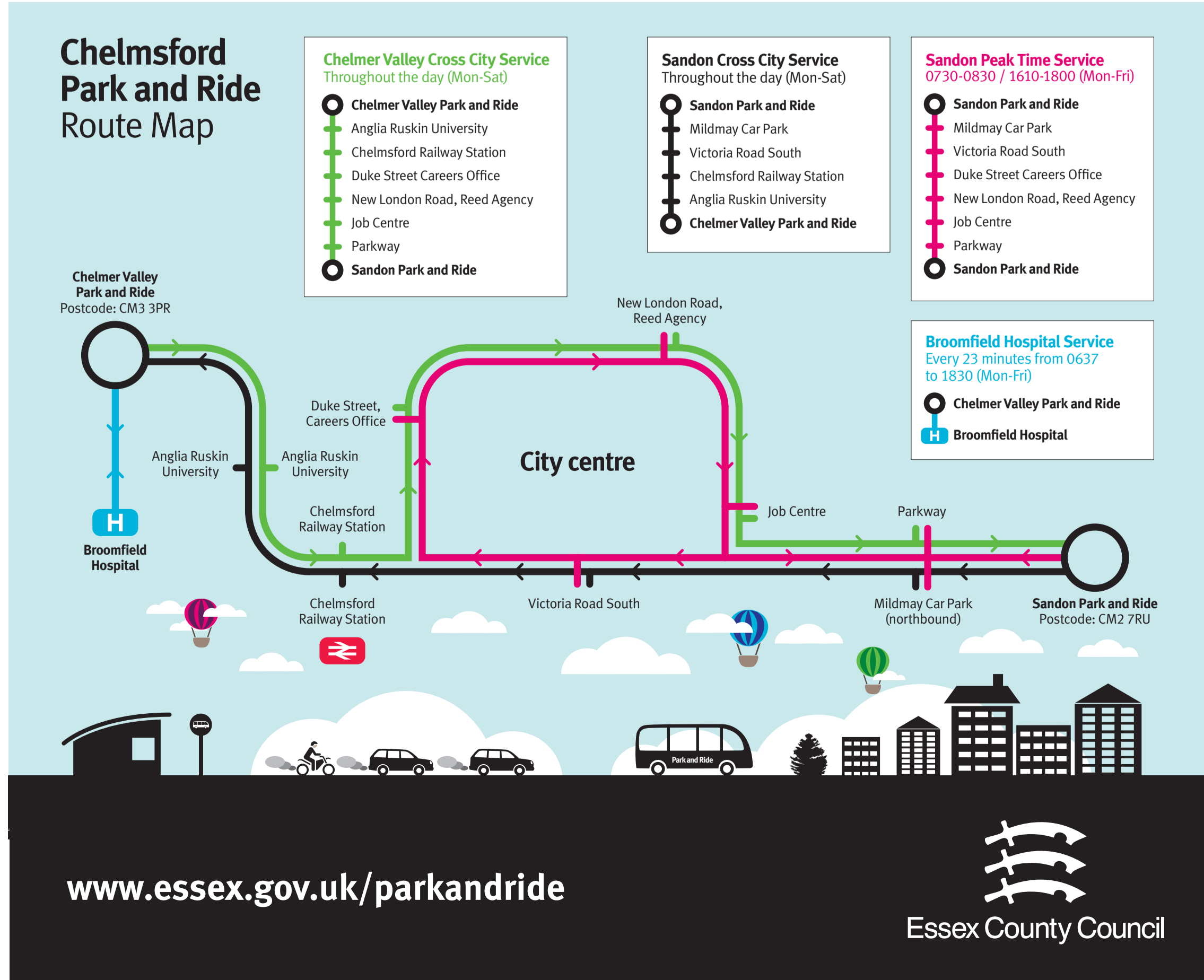
Child fares (5 - 15 years)

- **£1.00** day ticket (Mon - Sat)
- **£5.00** weekly
- **£20.00** monthly

Concessionary pass holders travel free after **0900** Monday – Friday and all day Saturday.

Tel: 0345 603 7631

www.essex.gov.uk/parkandride



www.essex.gov.uk/parkandride

