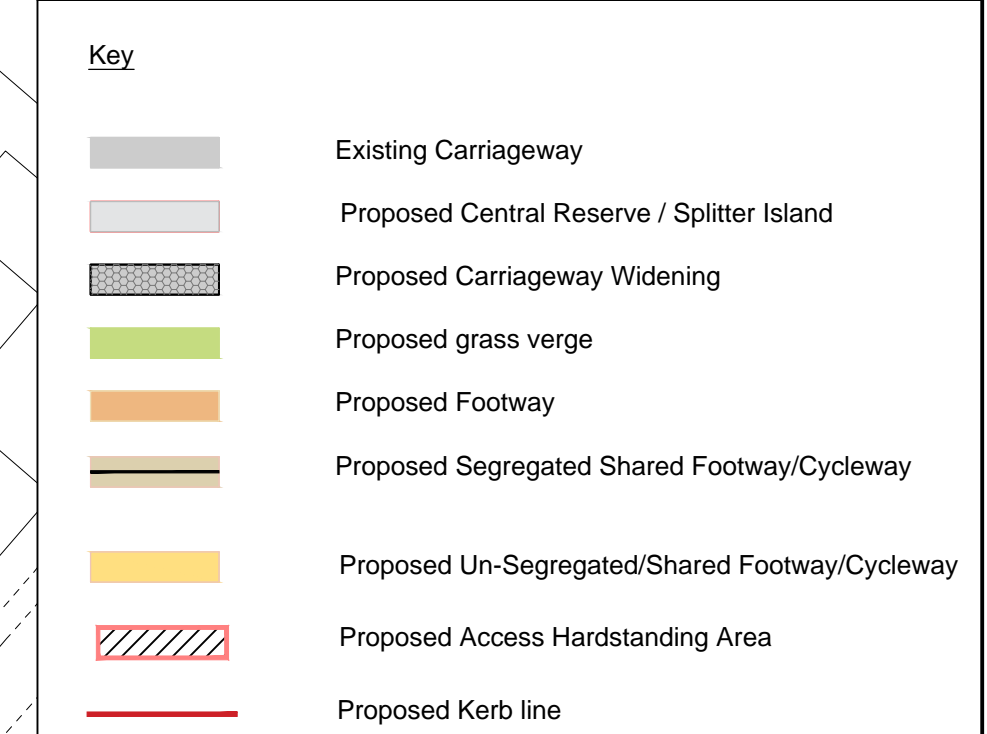
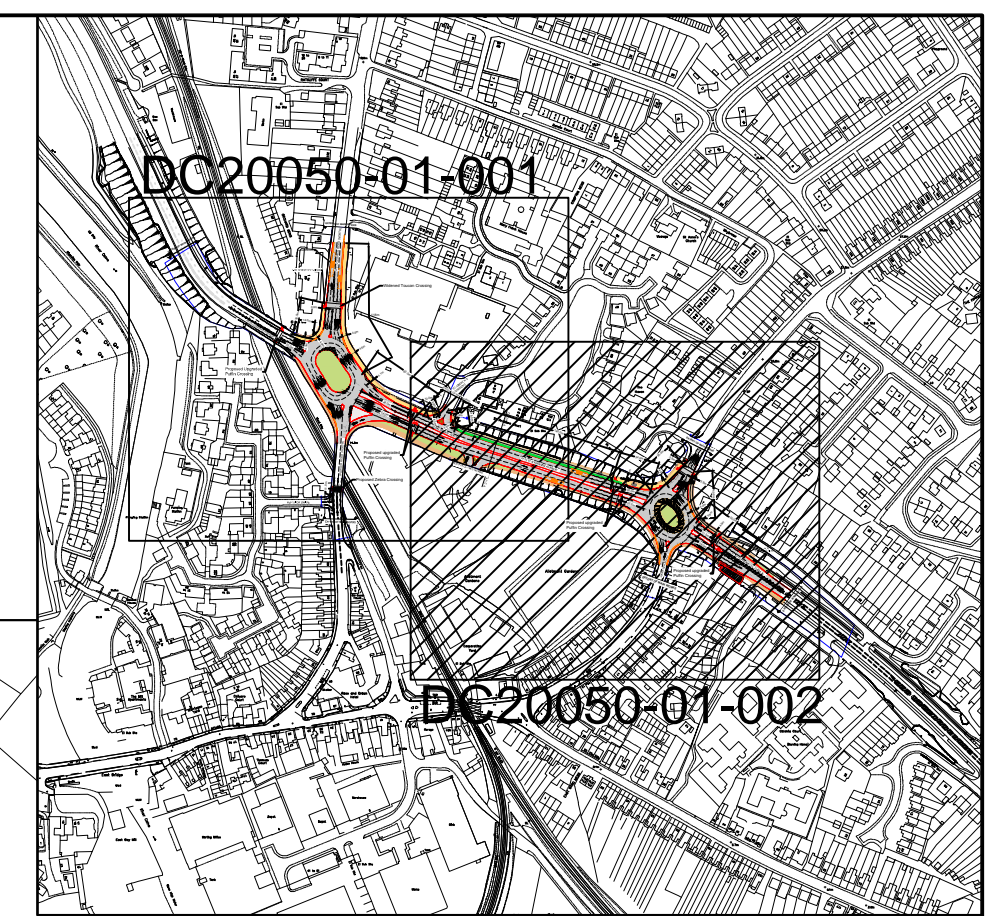


Harwich Road Roundabout - St Andrews Avenue



Rev.	Date	Description of revision	Drawn	Checked	Reviewed	Approved
P1	Nov 17	TENDER ISSUE	PB	KV	TP	TC

DRAWING STATUS									
COA									



Mark Rowe, Service Director, Highways
Seax House, Victoria Road South, Chelmsford, CM1 1QH.
Tel: 0345 6037631

© Essex County Council

SCHEME TITLE

A133 IPSWICH ROAD SCHEME

DRAWING TITLE

**GENERAL ARRANGEMENT
(SHEET 2 OF 2)**

DESIGNED	DRAWN	CHECKED	REVIEWED	APPROVED
PB	PB	KV	TP	TC
DATE	DATE	DATE	DATE	DATE
NOV 17	NOV 17	NOV 17	NOV 17	NOV 17

DRAWING UNITS U.N.O. DIMENSIONS IN MILLIMETRES LEVELS IN METRES	SCALE AT A1 (841X594mm) 1:500
---	--------------------------------------

DRAWING No.	REV.
DC20050-COA-002	P1

