



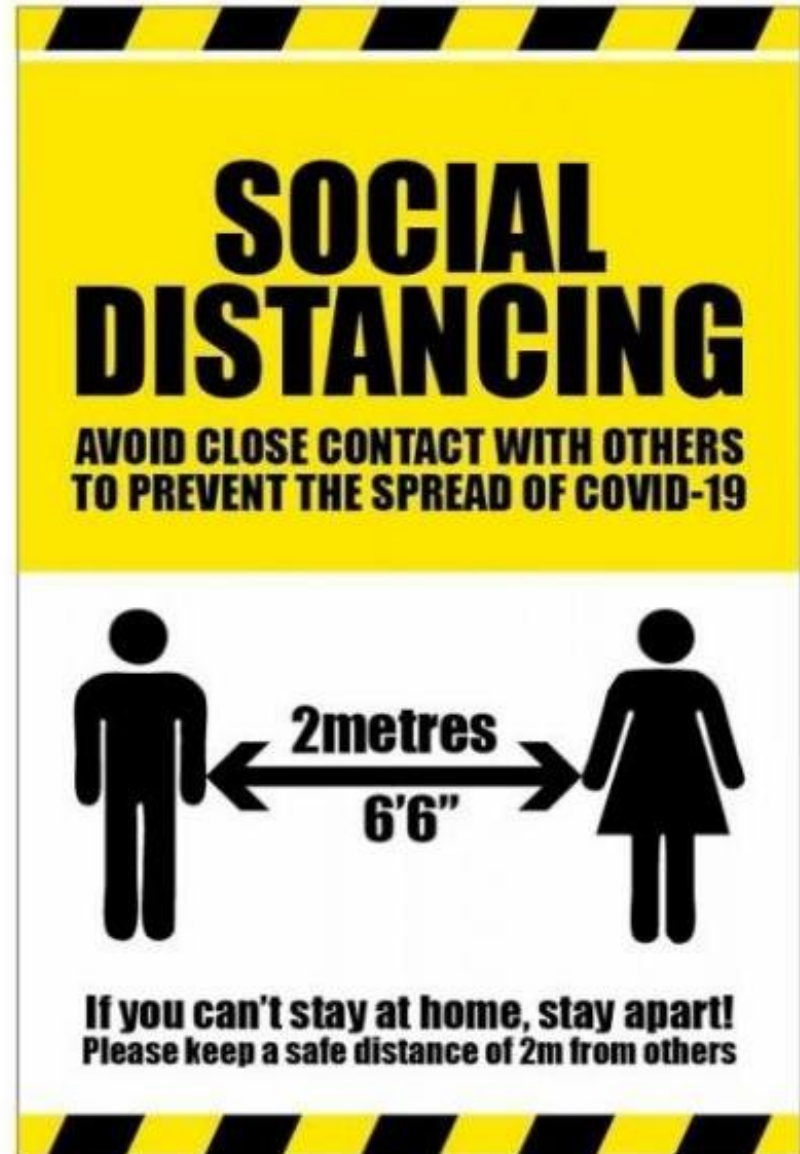
A133 IPSWICH ROAD SCHEME

COMMUNICATION UPDATE (04.12.20)



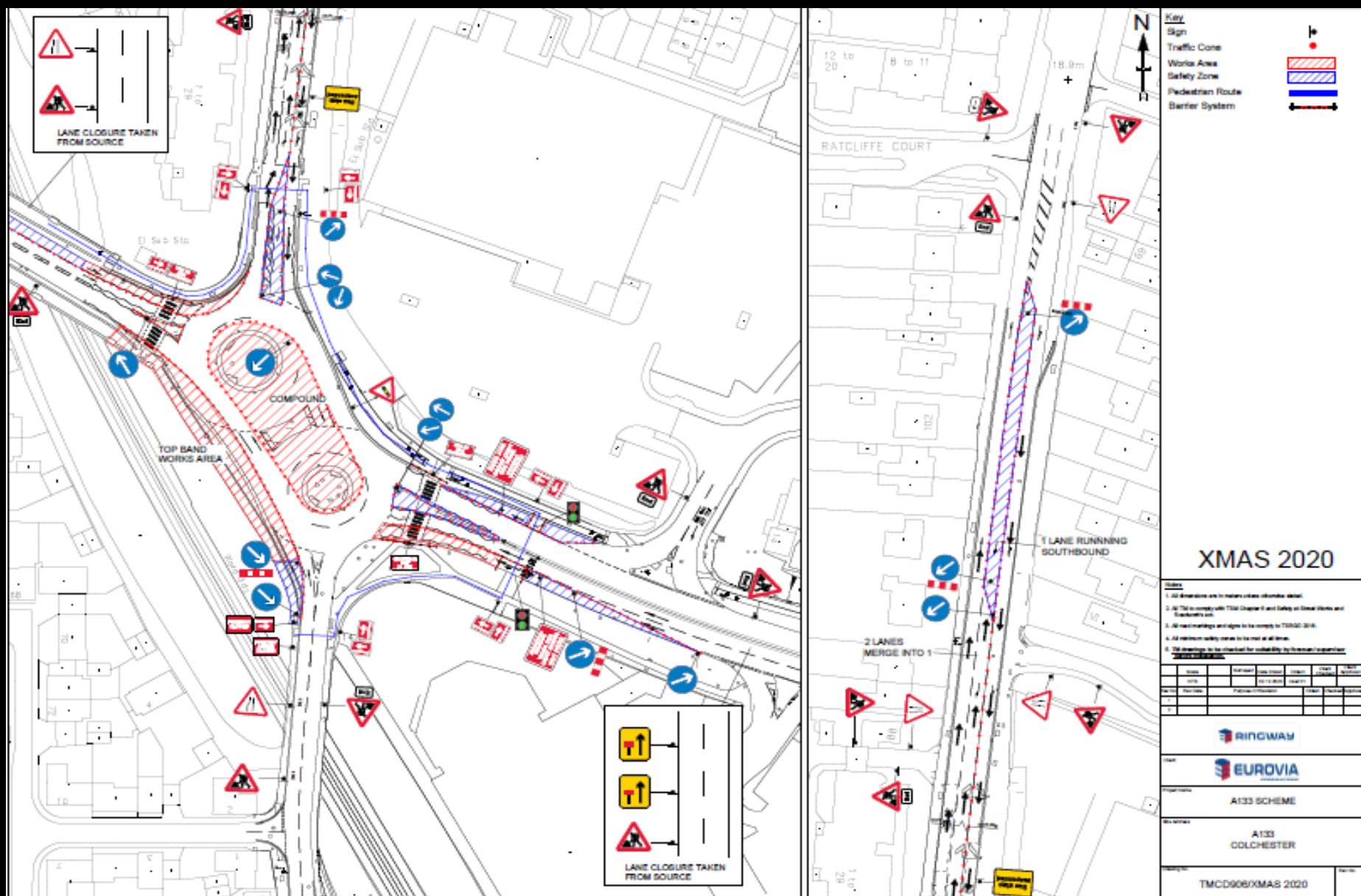
A message regarding COVID-19

- During this current Pandemic that we are all faced with and the return of the Eurovia workforce to the Colchester A133 site Could we politely ask that everyone respects the need for social distancing measures ensuring that we stay at least 2m away from each other at all times.
- If we could politely ask all members of the public to keep clear from all works activities and areas where possible to help prevent the spread of COVID-19 thus ensuring everyone's safety.



Noteworthy Information

- We will be shutting down the site for the Christmas period from 23.12.20 to 04.01.20. During this period we will be maintaining what Traffic management is still in place for safety reasons around the site but it will be as minimal as possible. The following slide is a traffic management drawing of the anticipated layout over the festive period.
- As we complete more areas around site, progress updates will continue to be provided throughout however will be less regular and will focus when significant changes are happening.
- As our works progress and more areas become complete we will reduce the amount of traffic management, fencing and restrictions we have in place where it is safe to do so.



Christmas 2020 TM arrangements

Traffic management

Cowdray Avenue has 2 lanes running up to the bridge. This is to help facilitate Emergency services travelling through this corridor. It is at this point we have taken lane 1 out to traffic to accommodate phase 1D footway works. Traffic then has to filter in on the approach to the Ipswich Road roundabout. The pedestrian footpath on Cowdray Avenue across the bridge is closed but an alternative walkway has been provided in the carriageway around these works to get to Ipswich Road. The zebra crossing point on Cowdray Avenue is closed and pedestrians can not get access to the Network Rail side due to the ongoing retaining wall works.

Ipswich Road north has been adjusted to accommodate the construction works to the retaining wall and also our compound in the Ipswich road roundabout. This means we have had to reduce the Southbound lane on Ipswich Road north to the Ipswich Road roundabout to 1 lane in order to facilitate all traffic around our works and works areas.

Harwich Road south is unrestricted.

Harwich Road north is unrestricted.

St Andrews Avenue east of the Harwich Road roundabout is unrestricted.

St Andrews Avenue east bound carriageway between the roundabouts is unrestricted.

St Andrews Avenue westbound carriageway between the roundabouts has lane 1 taken out just after the old Homebase entrance in order to facilitate the works on the Ipswich Road roundabout.

Passenger Transport

- The permanent bus stop shelter on the Ipswich Road north southbound footpath has been suspended and has been removed. A temporary bus stop has been placed prior to the construction zone 70m northwards.
- All other stops previously affected by works are now active in their original positions and have temporary bus stop signage in place.





Ipswich Road A133 Compound



Network rail retaining wall works area.

Ironwork Formation to the retaining wall.





Network Rail
retaining wall
construction area.





Concrete pouring
of the
foundations to
the retaining wall.



Footpath surface put
down on Cowdray corner
to Ipswich Road north.



Footpath surface on
Cowdray corner to
Ipswich road north.



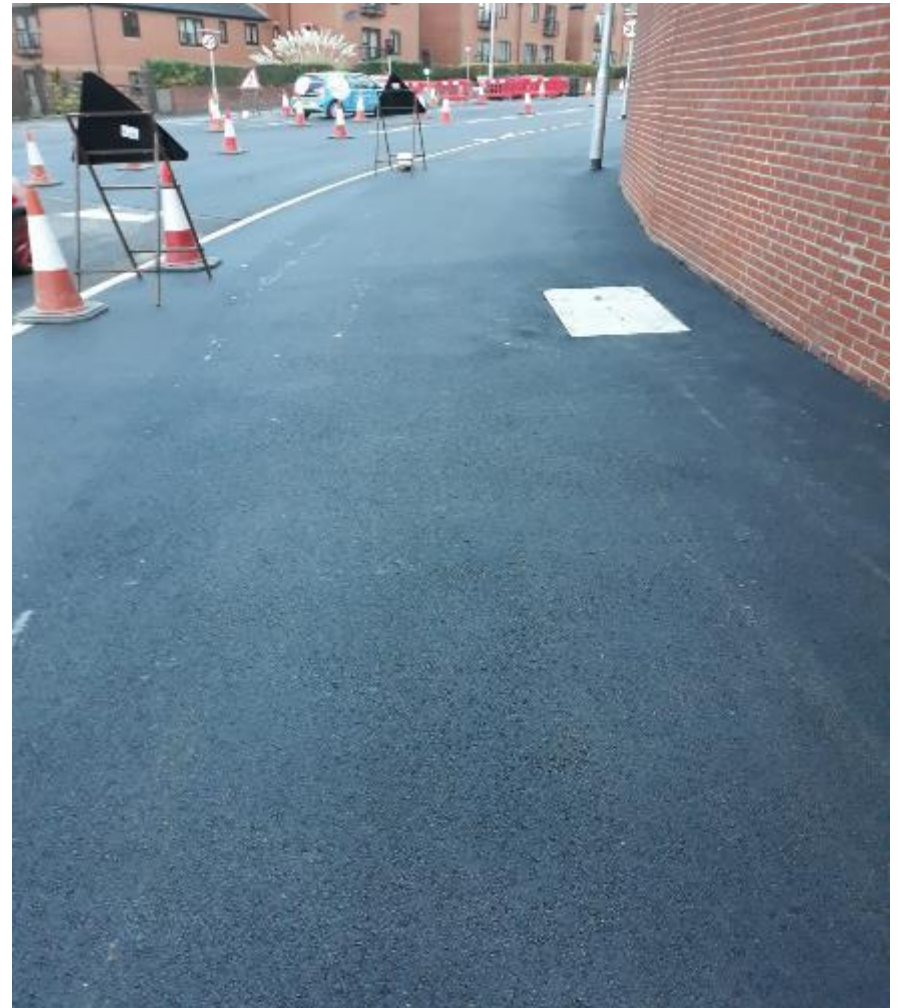
Centre Island on St Andrews Avenue completed.



Centre Island and crossings completed on St Andrews Avenue.



Footpaths completed on Ipswich road North around the Waitrose corner.



Footpaths completed on Ipswich Road north around the Waitrose corner.





St Andrews
Avenue high
friction
surface being
laid.

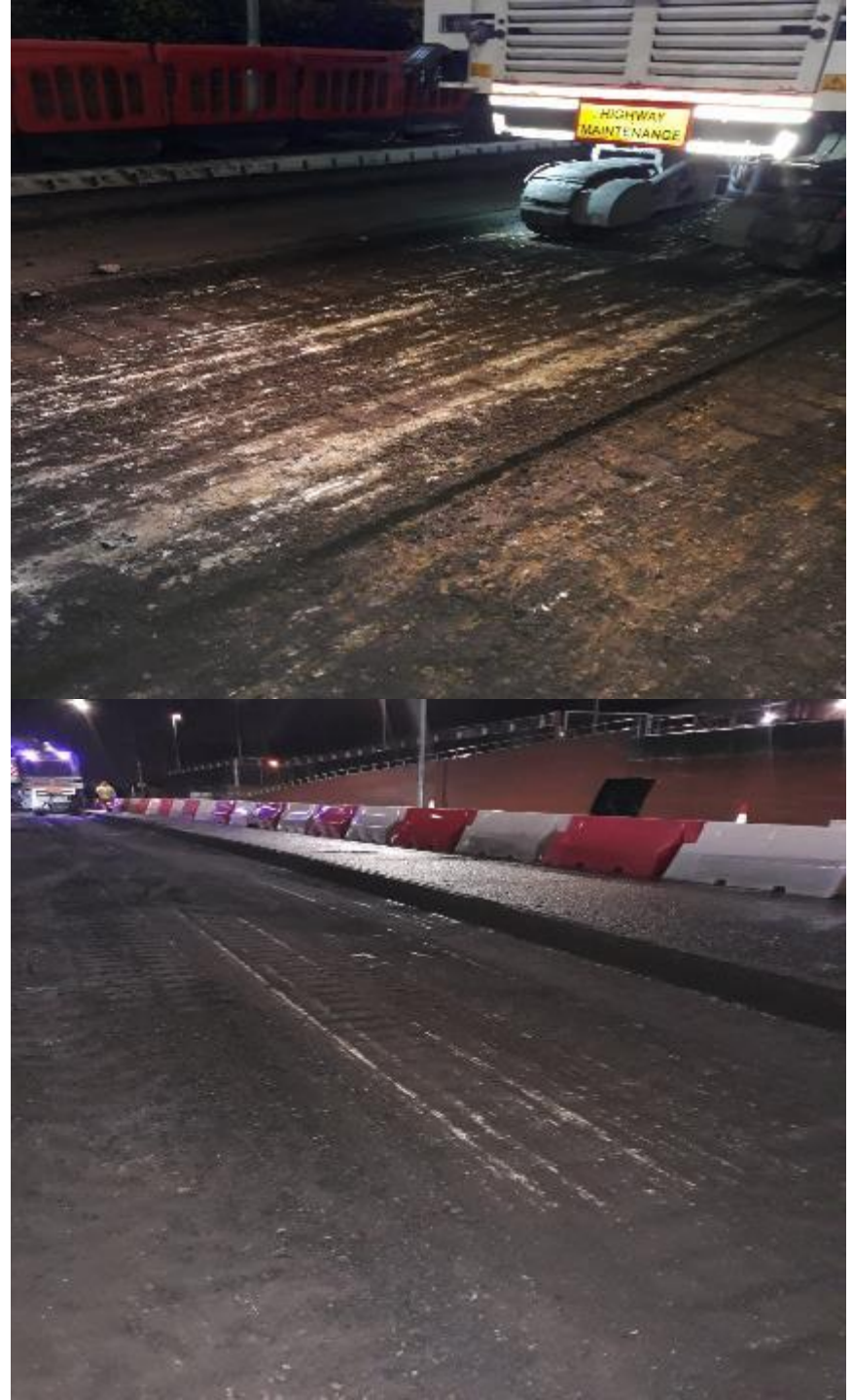
High friction surface being laid to the hardstanding area to residents properties on St Andrews Avenue.



Ipswich Road north road closure for the excavation and resurfacing phase during the lockdown period.



Ipswich Road north road closure for the excavation and resurfacing phase during the lockdown period.



Ipswich Road north road closure for the excavation and resurfacing phase during the lockdown period.



Ipswich Road north road closure for the excavation and resurfacing phase during the lockdown period.



Ipswich Road north road closure for
the excavation and resurfacing
phase during the lockdown period.



Ipswich Road north road finished
surfacing & Lining during the
lockdown period.



Completed Works

Works to the A133 Ipswich Road improvement scheme have nearly been completed. This has seen all carriageways & footways resurfaced and lined. We have completed all of the island resurfacing and most of the signage has been installed. All traffic signals are in place and we are awaiting the final sign off in order to get these operational.

All that remain are some minor works that will still be going on in certain areas but this will involve minimal traffic management and resource to complete these.

We still have certain construction works to complete on the Ipswich Road area but this works now falls under the Cowdray Bridge repair scheme as we are unable to complete these works until the Bridge has been repaired.

We have begun works to the Cowdray bridge scheme and as part of this during the Governments lockdown period we were able to complete the excavation & resurfacing to the Ipswich road north area. This was completed ahead of the proposed schedule whilst traffic volumes were lower during the latest Lockdown period. This involved installing 1 way traffic whilst this works took place but unfortunately due to members of the public ignoring traffic management in place we had no option but to close the road fully. This was for everyone's safety. We worked day and night for 9 nights to complete this section which included the laying of asphalt to the footpaths.

Works in construction zone 2D on the network rail embankment are ongoing.

We are awaiting final design and sign off for the repairs to Pilaster on the bridge itself but we have been continuing with concrete pours to the main foundations and the retaining wall.

Planned Works

We are continuing with various works around site as well as various other remedial tasks.

We are planning to complete the Anti skid in the last couple of sections next week.

Works in Construction zone 2D are ongoing. Top bond are on site and are continuing to reconstruct this area.

Works to repair the pilaster section on the Cowdray bridge is also ongoing. We are currently programming these repair works into the scheme.

The ironwork formation is ongoing and progress is good in this area. We have had 3 concrete pours so far along this section.

We have commenced works to the footway on the Cowdray bridge. This is to excavate and lay ducting through this section for the feed for the pedestrian crossing point. We have created a footway in lane 1 of the carriageway on Cowdray Avenue for pedestrians and cyclists.