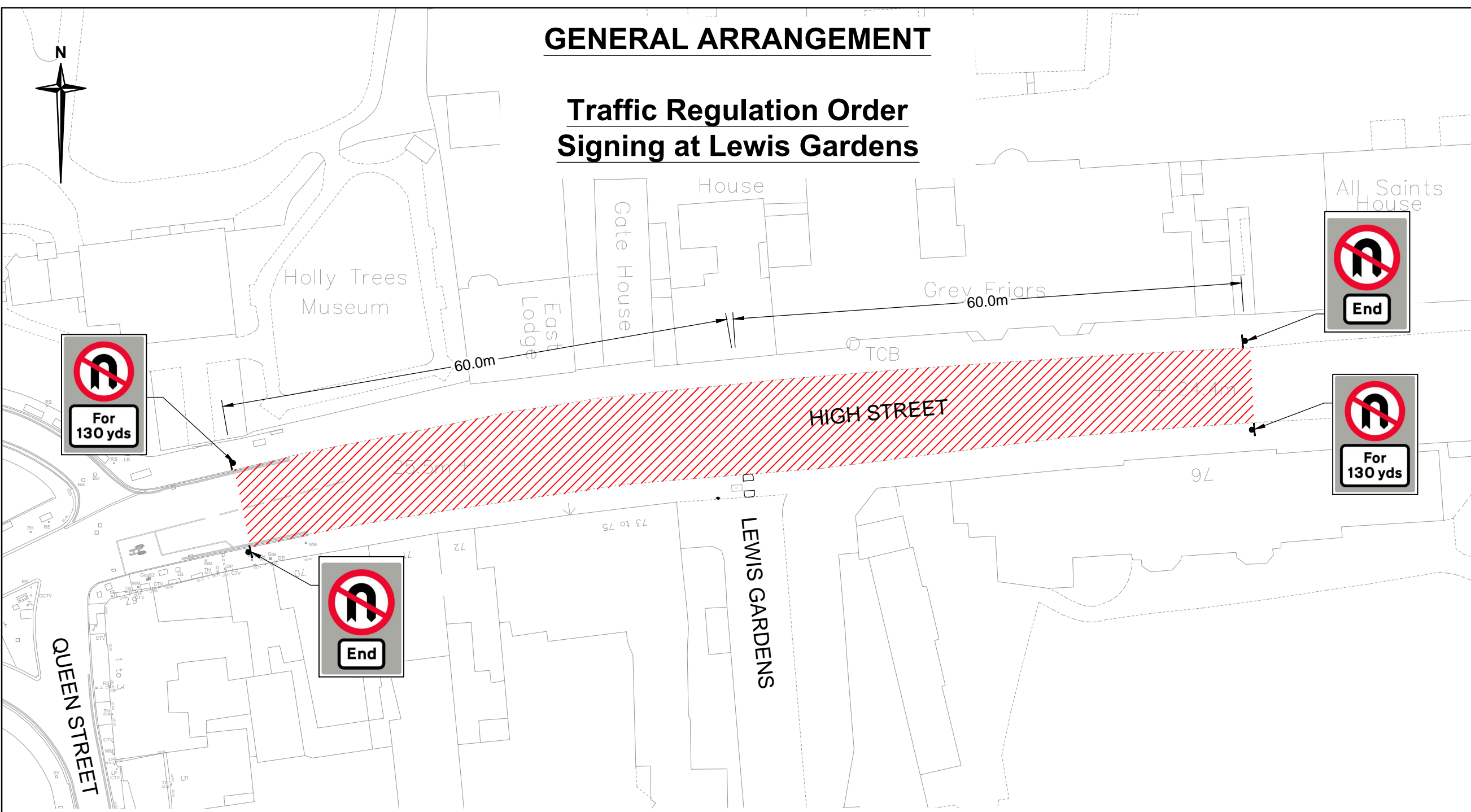


GENERAL ARRANGEMENT


Traffic Regulation Order Signing at Lewis Gardens



Notes

1. Do not scale.

Key

 Area subject to "No U-Turn" Traffic Regulation Order

Rev.	Date	Description of revision	Drawn	Checked	Reviewed	Approved

DRAWING STATUS
FOR CONSULTATION



Essex Highways, Seax House, Victoria Road South,
Chelmsford, CM1 1QH.
Tel: 0345 6037631 © Essex County Council

SCHEME TITLE
LEWIS GARDENS

DRAWING TITLE
TRAFFIC REGULATION ORDER

DESIGNED	DRAWN	CHECKED	REVIEWED	APPROVED
PFW	PFW	JGD	MPA	MPA
DATE AUG 19	DATE AUG 19	DATE AUG 19	DATE AUG 19	DATE AUG 19

DRAWING UNITS U.N.O. DIMENSIONS IN MILLIMETRES LEVELS IN METRES
SCALE AT A3 (420x297mm)
1:500

DRAWING No. **B3553GEN02-12-003** REV. **-**



This map is reproduced from Ordnance Survey material with the permission of Ordnance Survey on behalf of the Controller of Her Majesty's Stationery Office © Crown Copyright. Unauthorised reproduction infringes Crown Copyright and may lead to prosecution or civil proceedings. Essex County Council, 100019602, 2019