

Notes

1. Do not scale.

Key

- Proposed local bus only lanes
- Proposed shared use pedestrian/cycle unsegregated facility
- Proposed toucan crossing
- Proposed cycle track
- Proposed cycle track crossing
- Proposed footway
- Proposed puffin crossing
- Existing shared use unsegregated/footway facility retained
- Existing toucan/puffin crossing removed
- Proposed kerb
- Existing kerb
- Proposed/existing to remain white road marking
- Proposed/existing to remain yellow road marking
- Proposed sign
- Existing sign to remain

Rev.	Date	Description of revision	Drawn	Checked	Review'd	Approv'd
.	21/12/22		BA	JD	JD	PK
A	24/10/24	ADDITIONAL DETAILS ADDED	BA	JD	JD	PK

DRAWING STATUS

**S2 - FOR INFORMATION**

**Essex Highways**

Essex Highways, Seax House, Victoria Road South, Chelmsford, CM1 1QH.  
Tel: 0345 6037631

© Essex County Council

SCHEME TITLE

**NORTH ESSEX RAPID TRANSIT SYSTEM (RTS)**

DRAWING TITLE

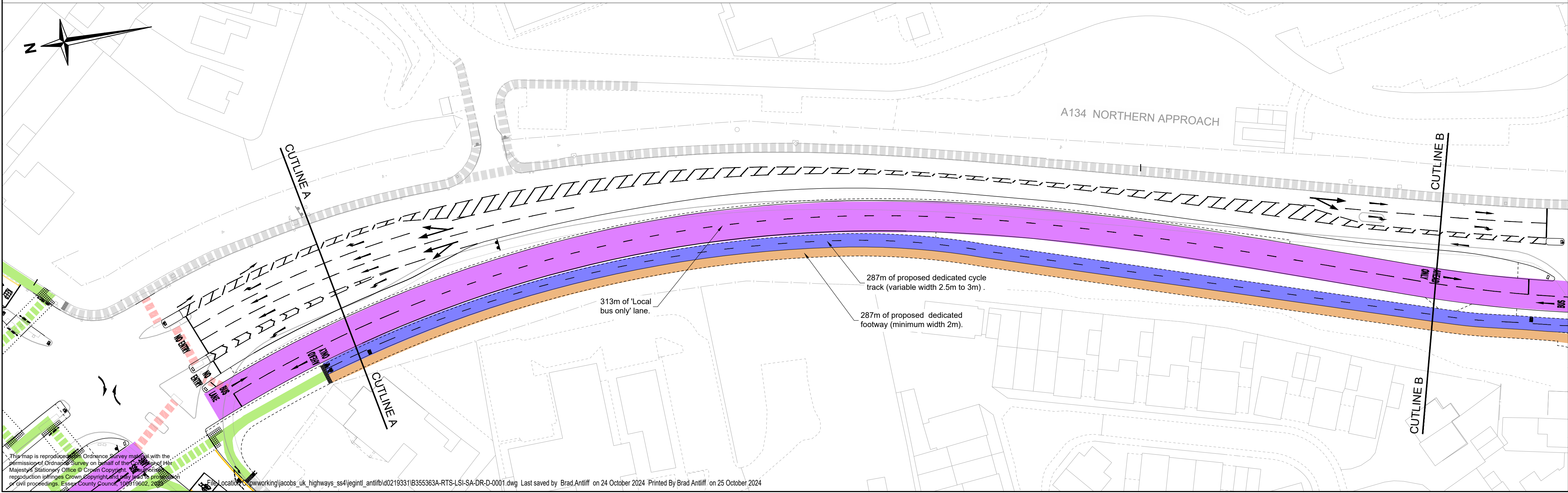
**SECTION A TRO PROPOSALS SHEET 1 OF 3**

DESIGNED	DRAWN	CHECKED	REVIEWED	APPROVED
BA	BA	JD	JD	JD
DATE JUL 23	DATE JUL 23	DATE JUL 23	DATE JUL 23	DATE JUL 23

STATUS CODE:	PROJECT STAGE:
Preliminary	3C

DRAWING UNITS U.N.O.	SCALE AT A1 (841X594mm)
DIMENSIONS IN MILLIMETRES LEVELS IN METRES	1:500

DRAWING No.	REV.
<b>B355363A-RTS-LSI-SA-DR-D-0001</b>	<b>A</b>



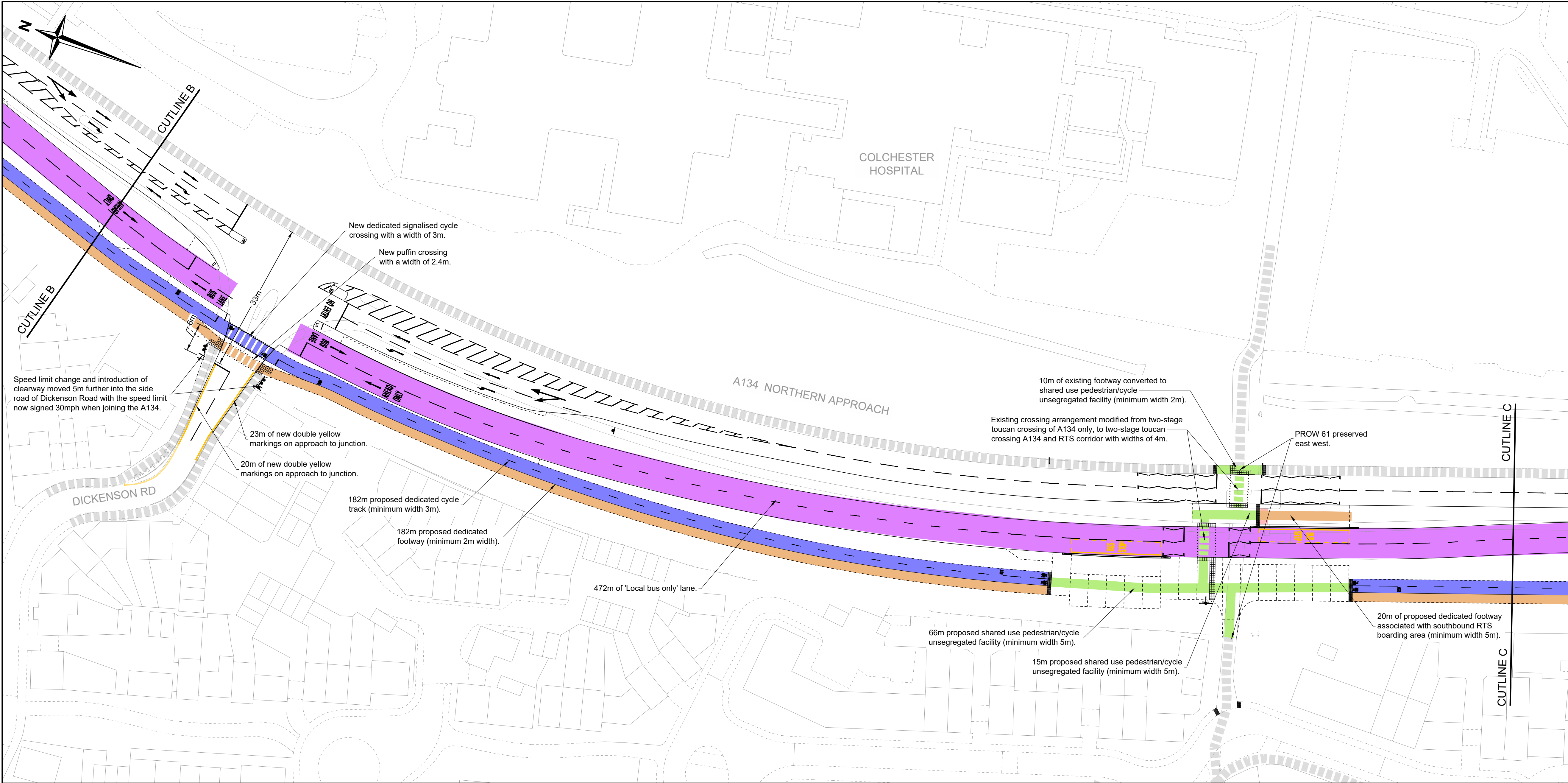
This map is reproduced from Ordnance Survey material with the permission of Ordnance Survey on behalf of the Controller of Her Majesty's Stationery Office © Crown Copyright. All rights reserved. Reproduction in any form without the permission of Ordnance Survey is prohibited.

File location: c:\working\jacobs\_uk\_highways\_ss4\egint\antlfb\d0219331\B355363A-RTS-LSI-SA-DR-D-0001.dwg Last saved by: Brad Antliff on 24 October 2024 Printed By: Brad Antliff on 25 October 2024

**RINGWAY JACOBS**  
Integrated expertise

**Essex County Council**





Rev.	Date	Description of revision	Drawn	Checked	Review'd	Approv'd
.	21/12/22		BA	JD	JD	PK
A	24/10/24	ADDITIONAL DETAILS ADDED	BA	JD	JD	PK

DRAWING STATUS

**S2 - FOR INFORMATION**



Essex Highways, Seax House, Victoria Road South, Chelmsford, CM1 1QH.  
Tel: 0345 6037631  
© Essex County Council

SCHEME TITLE

**NORTH ESSEX  
RAPID TRANSIT SYSTEM (RTS)**

DRAWING TITLE

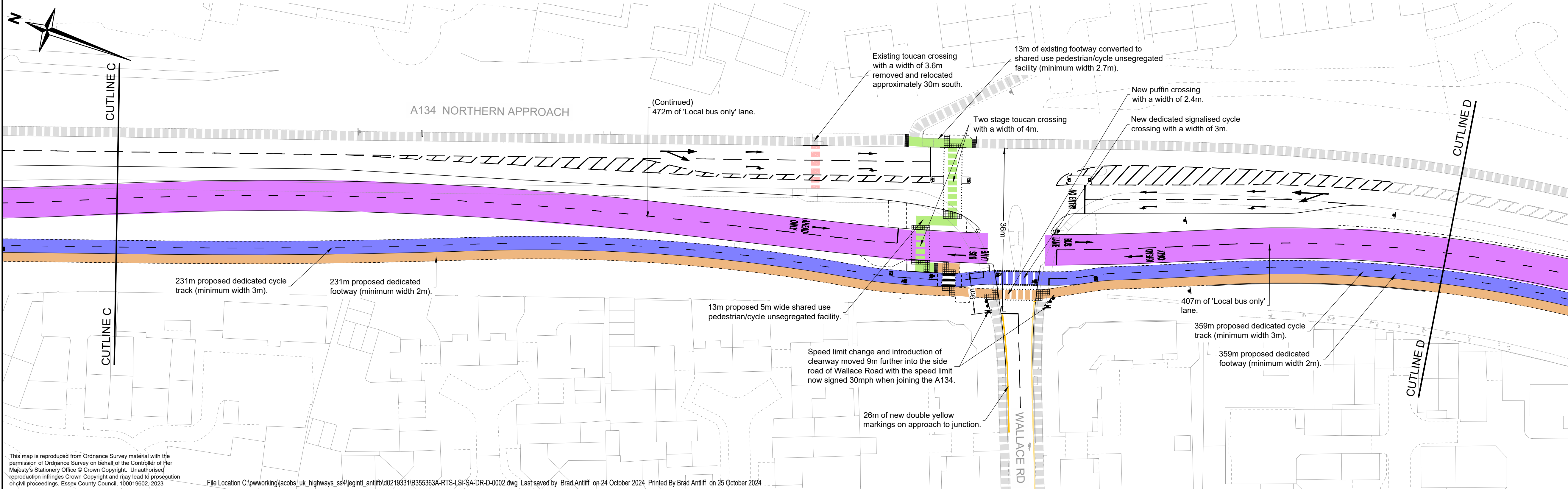
**SECTION A  
TRO PROPOSALS  
SHEET 2 OF 3**

DESIGNED	DRAWN	CHECKED	REVIEWED	APPROVED
BA	BA	JD	JD	JD
DATE JUL 23	DATE JUL 23	DATE JUL 23	DATE JUL 23	DATE JUL 23

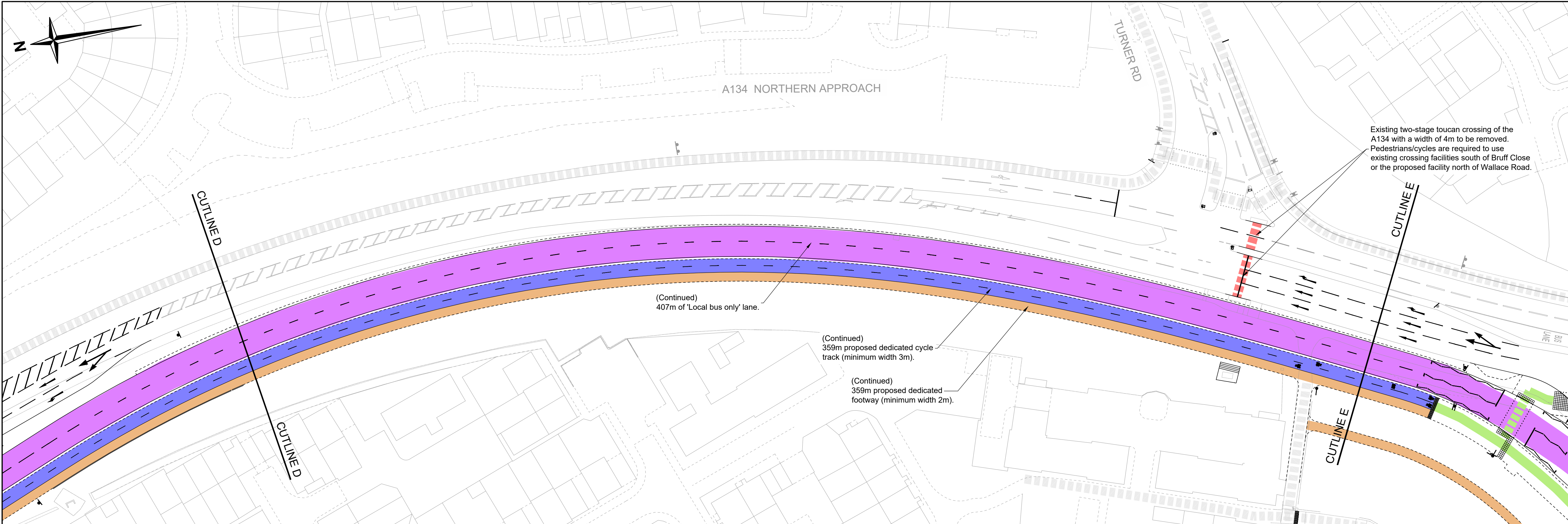
STATUS CODE: Preliminary	PROJECT STAGE: 3C
-----------------------------	----------------------

DRAWING UNITS U.N.O. DIMENSIONS IN MILLIMETRES LEVELS IN METRES	SCALE AT A1 (841X594mm) 1:500
---	----------------------------------

DRAWING No. <b>B355363A-RTS-LSI-SA-DR-D-0002</b>	REV. <b>A</b>
---	------------------





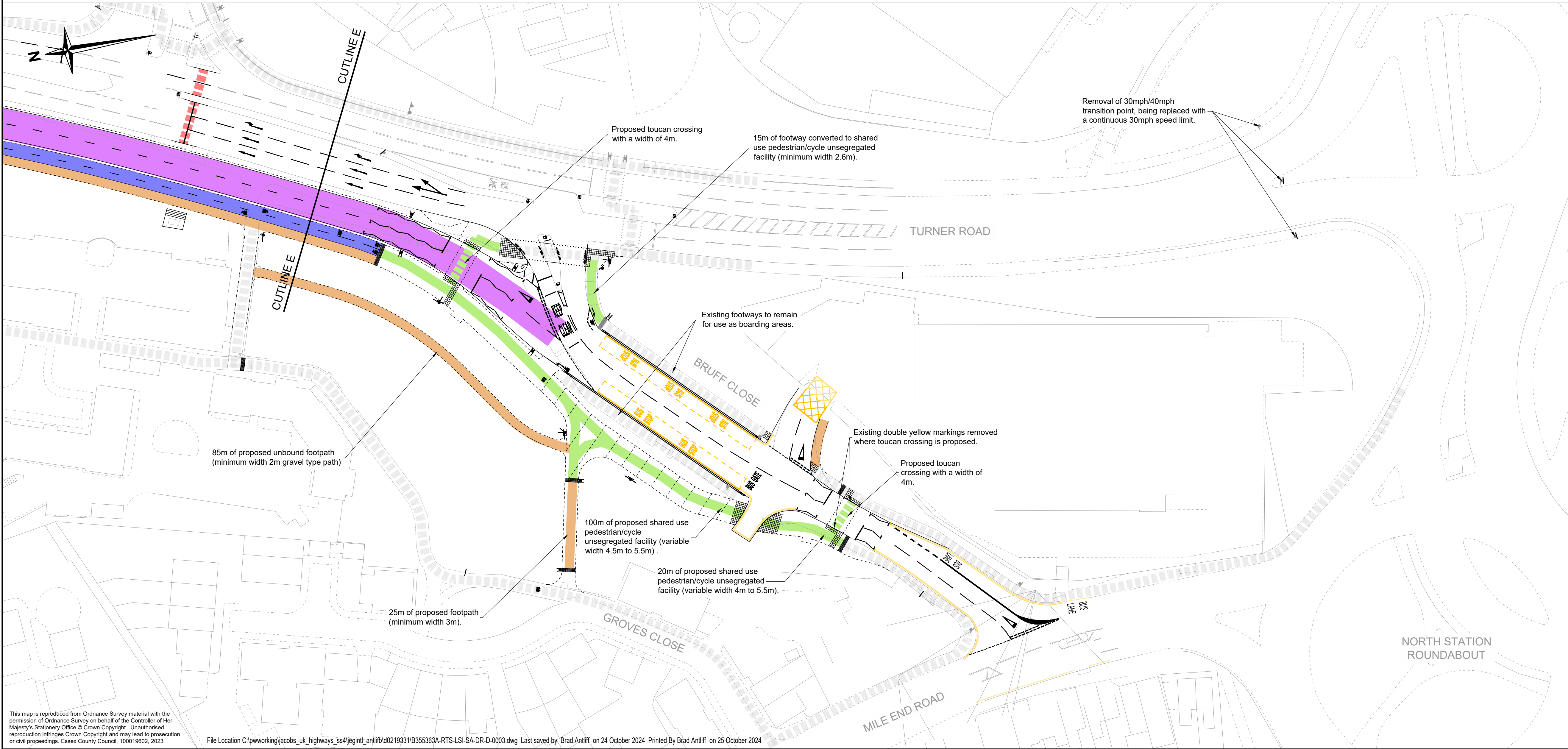


Notes

1. Do not scale.

Key

Proposed local bus only lanes

Proposed shared use pedestrian/cycle unsegregated facility

Rev.

Date

Description of revision

Drawn

Checked

Review'd

Approv'd

21/12/22

BA

JD

JD

PK

A

24/10/24

ADDITIONAL DETAILS ADDED

BA

JD

JD

PK

DRAWING STATUS

S2 - FOR INFORMATION

Essex Highways

Essex Highways, Seax House, Victoria Road South, Chelmsford, CM1 1QH. Tel: 0345 6037631

Essex County Council

SCHEME TITLE

NORTH ESSEX RAPID TRANSIT SYSTEM (RTS)

DRAWING TITLE

SECTION A TRO PROPOSALS SHEET 3 OF 3

DESIGNED

BA

DRAWN

BA

CHECKED

JD

REVIEWED

JD

APPROVED

JD

DATE

JUL 23

DATE

JUL 23

DATE

JUL 23

DATE

JUL 23

DATE

JUL 23

STATUS CODE:

Preliminary

PROJECT STAGE:

3C

DRAWING UNITS U.N.O. DIMENSIONS IN MILLIMETRES LEVELS IN METRES

SCALE AT A1 (841X594mm)

1:500

DRAWING No.

B355363A-RTS-LSI-SA-DR-D-0003

REV.

A

RINGWAY JACOBS Integrated expertise

Essex County Council