

Copyright Barter Hill Partnership. This drawing shall not be copied in whole or part without the written permission of The Barter Hill Partnership.

- Notes
- 1. PRELIMINARY DRAWING:** This drawing should be read as a PRELIMINARY issue and should NOT be used for construction under any circumstances.
 - The design has been carried out in accordance with all current working drawings provided by Persimmon Homes Essex. Please refer to Persimmon Homes Essex House Type working drawings to confirm locations of all drainage outlets. Any discrepancies should be reported to the engineer immediately, prior to commencement of any works on site.
 - Drawing subject to Section 278 approval.
 - The highway boundary has been derived from a PDF supplied by Essex County Council and can only be used indicatively.

E	Revised to suit Essex Highways updates	LA	JR	05/03/25
D	Updated to suit ECC S38 comments	EJS	AB	18/11/24
C	Updated to suit ECC S38 comments	JCR	ES	13/06/24
B	Updated to suit ECC S38 comments	JCR	JW	15/03/24
A	Design revised to suit new site layout, received 26/01/2023	CP	JW	02/03/23
-	Preliminary Issue	ATR	JW	06/12/22

Rev.	Description	By	Chk.	Date
------	-------------	----	------	------

Barter Hill Partnership Limited
 Greenway Business Centre
 Greenway
 Harlow Business Park
 Essex CM19 5QE
 t: 01279 430888
 e: mail@barterhill.co.uk

Consulting Structural & Civil Engineers
 15 Meridian Way
 Meridian Business Park
 Norwich NR7 0TA
 t: 01603 300360
 e: mail@barterhill.co.uk

Client
Persimmon Homes Essex

Project
Crissing Braintree

Drawing Title
Proposed 20 MPH Speed Limit Zone - Sheet 1 of 3

Designed by JW	Drawn by JW	Checked by JR
-------------------	----------------	------------------

Scale @ A3 1:1000	Date September 2022
----------------------	------------------------

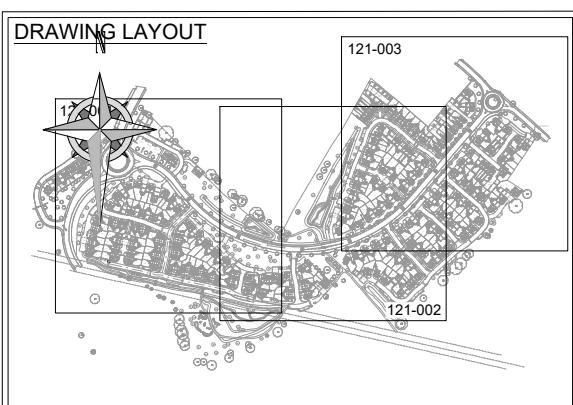
Drawing No. 8578-121-001	Revision E	Job Ref 8578
-----------------------------	---------------	-----------------

Status
PRELIMINARY ISSUE

Cad file P:\8578\Civil\Drawings\8578-121	Contact Office Norwich
---	---------------------------

TRO KEY

PROPOSED 20MPH ZONE - ADOPTABLE ROAD	
PROPOSED 20MPH ZONE - PRIVATE ROAD	



Copyright Barter Hill Partnership. This drawing shall not be copied in whole or part without the written permission of The Barter Hill Partnership.

- Notes
- 1. PRELIMINARY DRAWING:** This drawing should be read as a PRELIMINARY issue and should NOT be used for construction under any circumstances.
 - The design has been carried out in accordance with all current working drawings provided by Persimmon Homes Essex. Please refer to Persimmon Homes Essex House Type working drawings to confirm locations of all drainage outlets. Any discrepancies should be reported to the engineer immediately, prior to commencement of any works on site.
 - Drawing subject to Section 278 approval.
 - The highway boundary has been derived from a PDF supplied by Essex County Council and can only be used indicatively.

E	Revised to suit Essex Highways updates	LA	JR	05/03/25
D	Relocated drawing layout key	JCR	EJS	06/09/24
C	Updated to suit ECC S38 comments	JCR	ES	13/06/24
B	Updated to suit ECC S38 comments	JCR	JW	15/03/24
A	Design revised to suit new site layout, received 26/01/2023	CP	JW	02/03/23
-	Preliminary Issue	ATR	JW	06/12/22

Rev.	Description	By	Chk.	Date
------	-------------	----	------	------

Barter Hill Partnership Limited

Greenway Business Centre
Greenway
Harlow Business Park
Essex CM19 5QE
t: 01279 430888
e: mail@barterhill.co.uk

15 Meridian Way
Meridian Business Park
Norwich NR7 0TA
t: 01603 300360
e: mail@barterhill.co.uk

Consulting Structural & Civil Engineers

Client
Persimmon Homes Essex

Project
Crissing Braintree

Drawing Title
Proposed 20 MPH Speed Limit Zone - Sheet 2 of 3

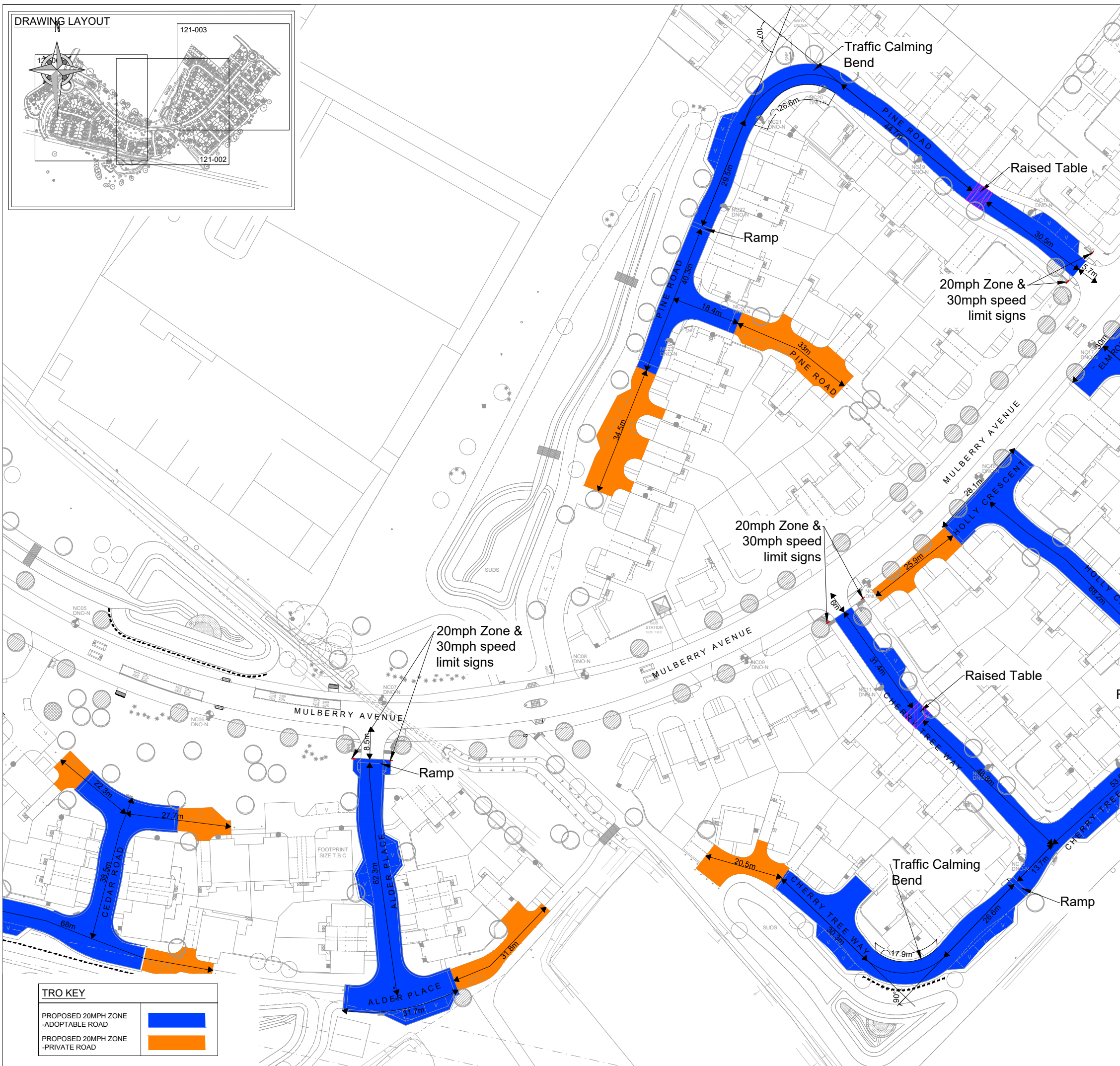
Designed by JW	Drawn by JW	Checked by JR
--------------------------	-----------------------	-------------------------

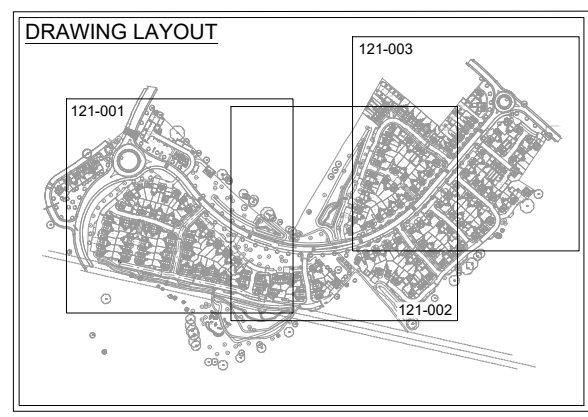
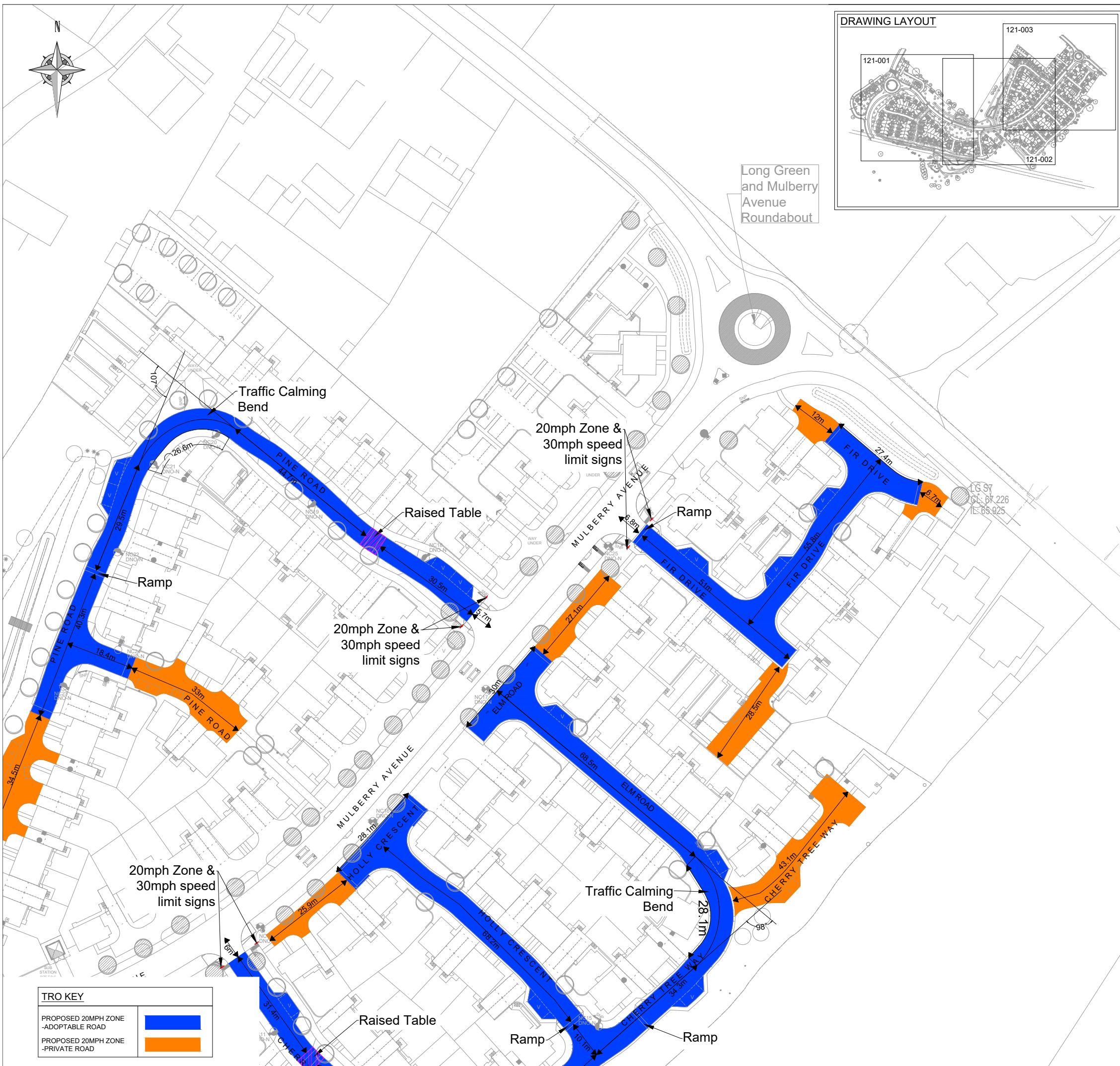
Scale @ A3 1:1000	Date September 2022
-----------------------------	-------------------------------

Drawing No. 8578-121-002	Revision E	Job Ref 8578
------------------------------------	----------------------	------------------------

Status
PRELIMINARY ISSUE

Cad file P:\8578\Civil\Drawings\8578-121	Contact Office Norwich
---	----------------------------------





Long Green and Mulberry Avenue Roundabout

TRO KEY	
PROPOSED 20MPH ZONE - ADOPTABLE ROAD	
PROPOSED 20MPH ZONE - PRIVATE ROAD	

Copyright Barter Hill Partnership. This drawing shall not be copied in whole or part without the written permission of The Barter Hill Partnership.

- Notes
- PRELIMINARY DRAWING:** This drawing should be read as a PRELIMINARY issue and should NOT be used for construction under any circumstances.
 - The design has been carried out in accordance with all current working drawings provided by Persimmon Homes Essex. Please refer to Persimmon Homes Essex House Type working drawings to confirm locations of all drainage outlets. Any discrepancies should be reported to the engineer immediately, prior to commencement of any works on site.
 - Drawing subject to Section 278 approval.
 - The highway boundary has been derived from a PDF supplied by Essex County Council and can only be used indicatively.

Rev.	Description	By	Chk.	Date
D	Revised to suit Essex Highways updates	LA	JR	05/03/25
C	Updated to suit ECC S38 comments	JCR	ES	13/06/24
B	Updated to suit ECC S38 comments	JCR	JW	15/03/24
A	Design revised to suit new site layout, received 26/01/2023	CP	JW	02/03/23
-	Preliminary Issue	ATR	JW	06/12/22

Barter Hill Partnership Limited

Greenway Business Centre
Greenway
Harlow Business Park
Essex CM19 5QE
t: 01279 430888
e: mail@barterhill.co.uk

15 Meridian Way
Meridian Business Park
Norwich NR7 0TA
t: 01603 300360
e: mail@barterhill.co.uk

Consulting Structural & Civil Engineers

Client
Persimmon Homes Essex

Project
Crossing Braintree

Drawing Title
Proposed 20 MPH Speed Limit Zone - Sheet 3 of 3

Designed by JW	Drawn by JW	Checked by JR
--------------------------	-----------------------	-------------------------

Scale @ A3 1:1000	Date September 2022
-----------------------------	-------------------------------

Drawing No. 8578-121-003	Revision D	Job Ref 8578
------------------------------------	----------------------	------------------------

Status
PRELIMINARY ISSUE

Cad file P:\8578\Civil\Drawings\8578-121	Contact Office Norwich
---	----------------------------------



Copyright Barter Hill Partnership. This drawing shall not be copied in whole or part without the written permission of The Barter Hill Partnership.

Notes

1. **PRELIMINARY DRAWING:** This drawing should be read as a PRELIMINARY issue and should NOT be used for construction under any circumstances.
2. The design has been carried out in accordance with all current working drawings provided by Persimmon Homes Essex. Please refer to Persimmon Homes Essex House Type working drawings to confirm locations of all drainage outlets. Any discrepancies should be reported to the engineer immediately, prior to commencement of any works on site.
3. The highway boundary has been derived from a PDF supplied by Essex County Council and can only be used indicatively.

C	Revised to suit Essex Highways updates	LA	JR	05/03/25
B	Updated to suit ECC S278 comments	JCR	JW	02/10/23
A	Updated to suit ECC S278 comments	PN	JW	30/08/23
-	Preliminary Issue	JCR	JW	07/08/23

Rev.	Description	By	Chk.	Date
------	-------------	----	------	------

Barter Hill Partnership Limited

Greenway Business Centre
Greenway
Harlow Business Park
Essex CM19 5QE
t: 01279 430888
e: mail@barterhill.co.uk

15 Meridian Way
Meridian Business Park
Norwich NR7 0TA
t: 01603 300360
e: mail@barterhill.co.uk

Consulting Structural & Civil Engineers

Client
Persimmon Homes Essex

Project
Crossing Braintree

Drawing Title
Braintree Road - Proposed 20MPH Speed Limit Zone

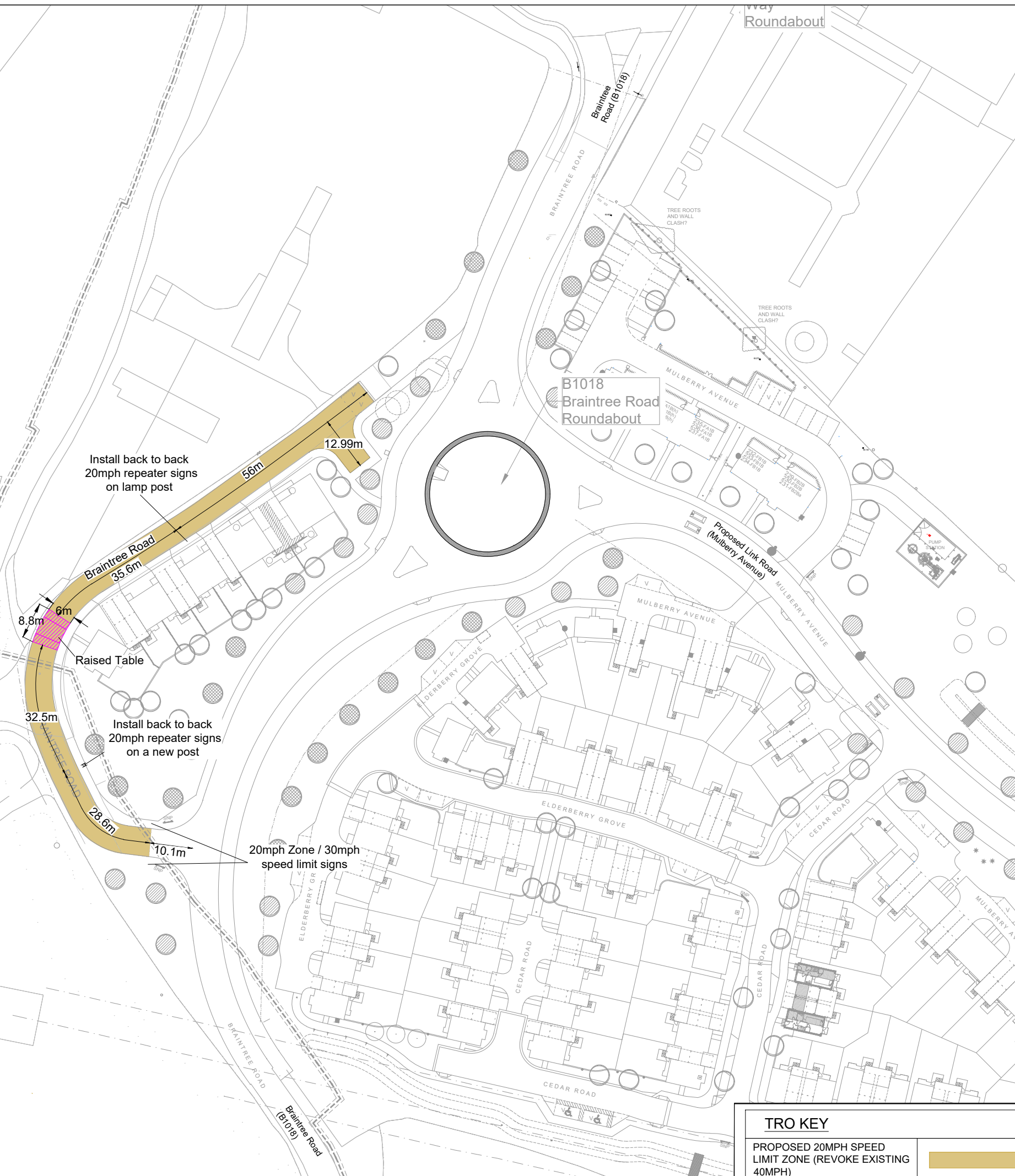
Designed by DS	Drawn by JW	Checked by JR
--------------------------	-----------------------	-------------------------

Scale @ A3 1:1000	Date August 2023
-----------------------------	----------------------------

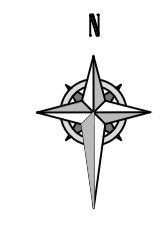
Drawing No. 8578-308-008	Revision C	Job Ref 8578
------------------------------------	----------------------	------------------------

Status
PRELIMINARY ISSUE

Cad file P:\8578\Civil\Drawings\8578-308	Contact Office Norwich
---	----------------------------------



TRO KEY	
PROPOSED 20MPH SPEED LIMIT ZONE (REVOKE EXISTING 40MPH)	



Copyright Barter Hill Partnership. This drawing shall not be copied in whole or part without the written permission of The Barter Hill Partnership.

Notes

1. PRELIMINARY DRAWING: This drawing should be read as a PRELIMINARY issue and should NOT be used for construction under any circumstances.
2. The design has been carried out in accordance with all current working drawings provided by Persimmon Homes Essex. Please refer to Persimmon Homes Essex House Type working drawings to confirm locations of all drainage outlets. Any discrepancies should be reported to the engineer immediately, prior to commencement of any works on site.

TRO KEY

EXISTING 40MPH SPEED LIMIT	
EXISTING 50MPH SPEED LIMIT	
EXISTING NATIONAL SPEED LIMIT	
PROPOSED 30MPH SPEED LIMIT	
PROPOSED 40MPH SPEED LIMIT (Excluded from CMA)	

A	Revised to suit Essex Highways updates	LA	JR	05/03/26
-	Preliminary Issue	JW	JR	21/11/23

Rev.	Description	By	Chk.	Date
------	-------------	----	------	------

barterhill Barter Hill Partnership Limited
 Greenway Business Centre
 Greenway
 Harlow Business Park
 Essex CM19 5QE
 t: 01279 430888
 e: mail@barterhill.co.uk

15 Meridian Way
 Meridian Business Park
 Norwich NR7 0TA
 t: 01603 300360
 e: mail@barterhill.co.uk

Client
Persimmon Homes Essex

Project
**Crossing,
Braintree**

Drawing Title
**Traffic Regulation Order
Speed Limit - Long Green, Crossing**

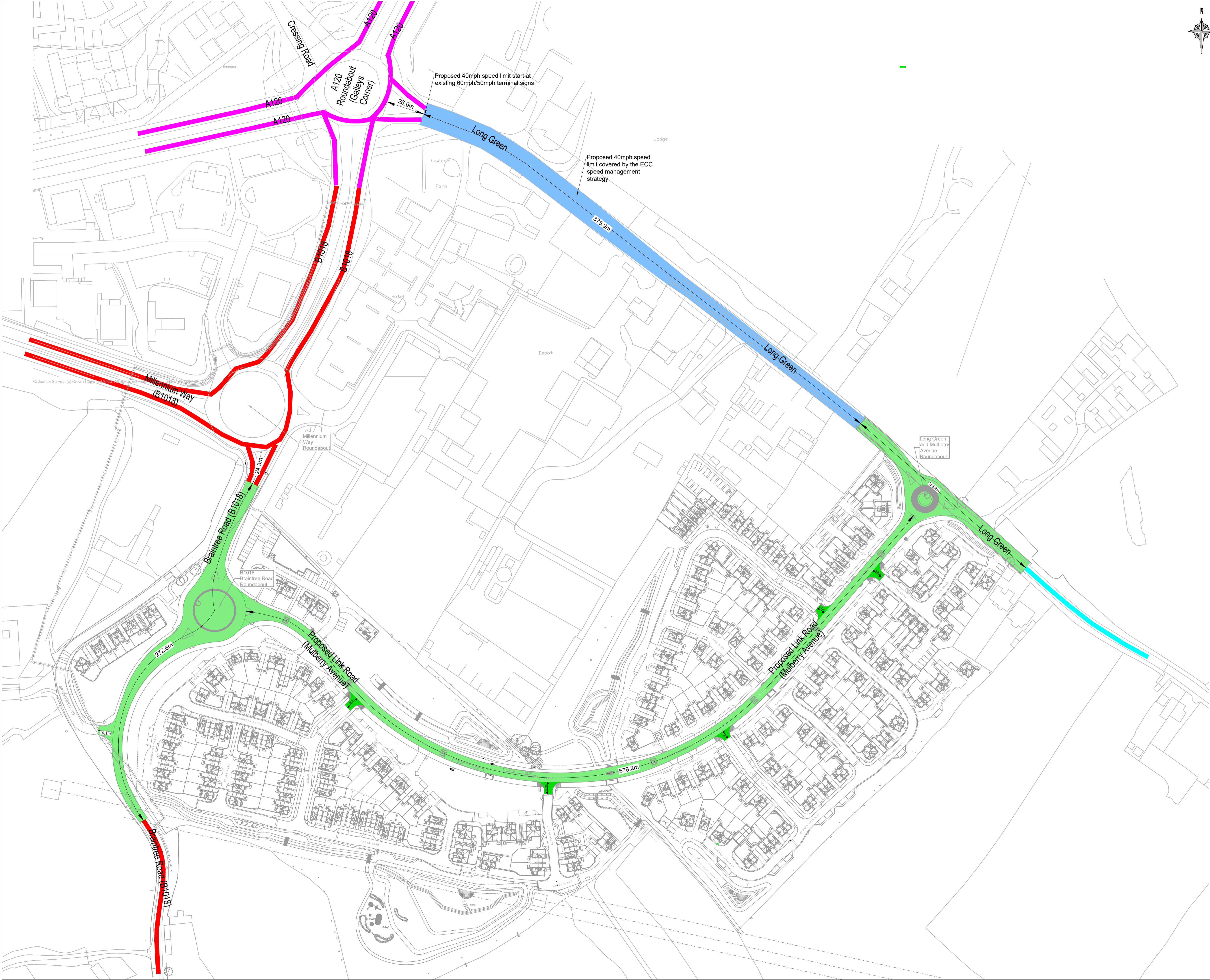
Designed by JCR	Drawn by JCR	Checked by JW
--------------------	-----------------	------------------

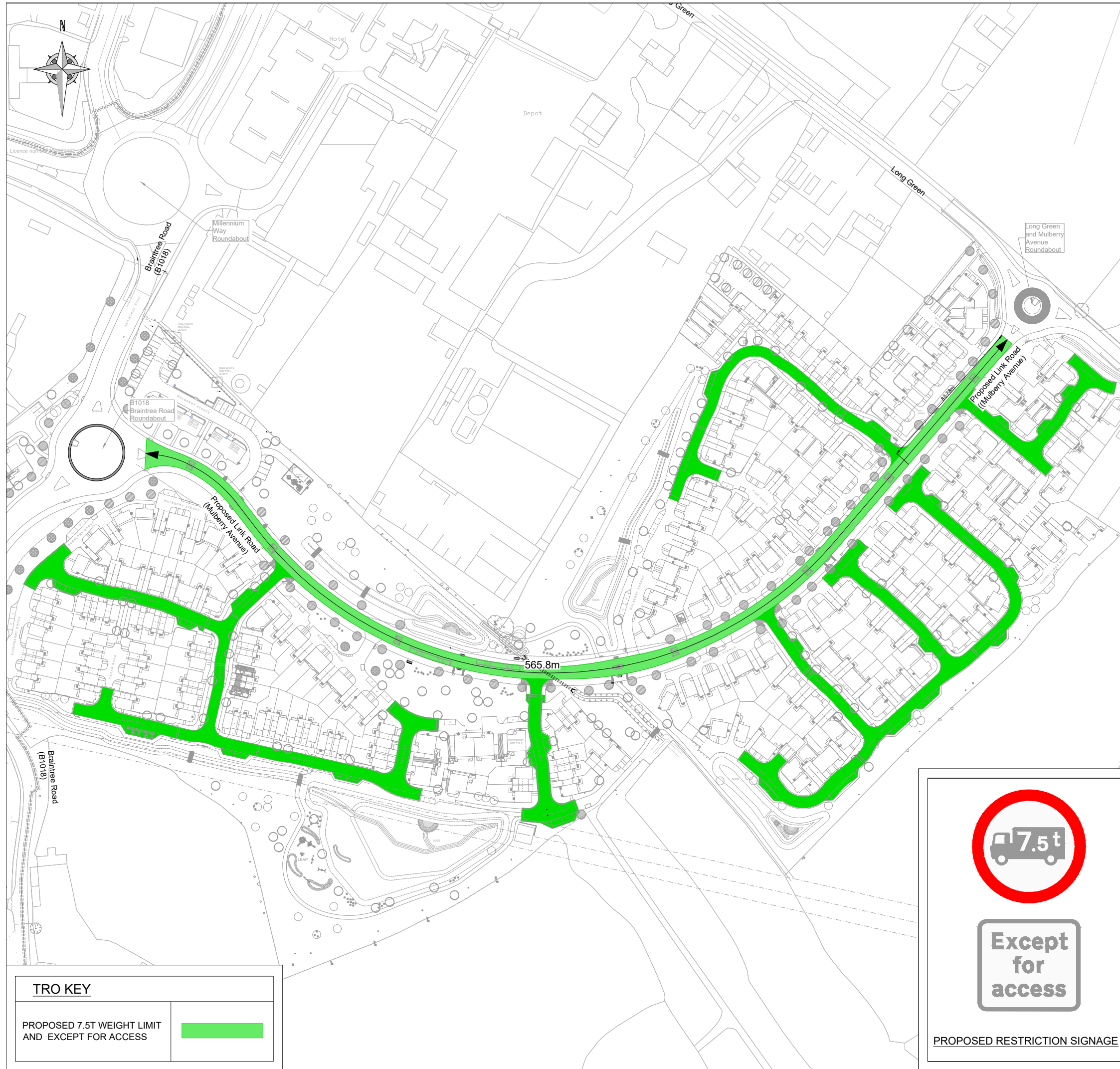
Scale @ A1 1:1250	Date November 2023
----------------------	-----------------------


Drawing No. 8578-313-003	Revision A	Job Ref 8578
-----------------------------	---------------	-----------------

Status
PRELIMINARY ISSUE

Cad file P:8578/Teamwork/Civils/BHP Drawings	Contact Office Norwich
---	---------------------------





TRO KEY	
PROPOSED 7.5T WEIGHT LIMIT AND EXCEPT FOR ACCESS	





PROPOSED RESTRICTION SIGNAGE

Copyright Barter Hill Partnership. This drawing shall not be copied in whole or part without the written permission of The Barter Hill Partnership.

- Notes
- PRELIMINARY DRAWING:** This drawing should be read as a PRELIMINARY issue and should NOT be used for construction under any circumstances.
 - The design has been carried out in accordance with all current working drawings provided by Persimmon Homes Essex. Please refer to Persimmon Homes Essex House Type working drawings to confirm locations of all drainage outlets. Any discrepancies should be reported to the engineer immediately, prior to commencement of any works on site.
 - The highway boundary has been derived from a PDF supplied by Essex County Council and can only be used indicatively.

D	Revised to suit Essex Highways updates	LA	JR	05/03/25
C	Updated to suit ECC S278 comments, received 22/10/23	JCR	JW	26/10/23
B	Updated to suit ECC S278 comments	JCR	JW	02/10/23
A	Updated to suit ECC S278 comments	PN	JW	30/08/23
-	Preliminary Issue	JCR	JW	07/08/23

Rev.	Description	By	Chk.	Date
------	-------------	----	------	------



Barter Hill Partnership Limited

Greenway Business Centre
Greenway
Harlow Business Park
Essex CM19 5QE
t: 01279 430888
e: mail@barterhill.co.uk

15 Meridian Way
Meridian Business Park
Norwich NR7 0TA
t: 01603 300360
e: mail@barterhill.co.uk

Client
Persimmon Homes Essex

Project
Crossing Braintree

Drawing Title
Mulberry Avenue - Proposed Introduction of 7.5t Weight Limit

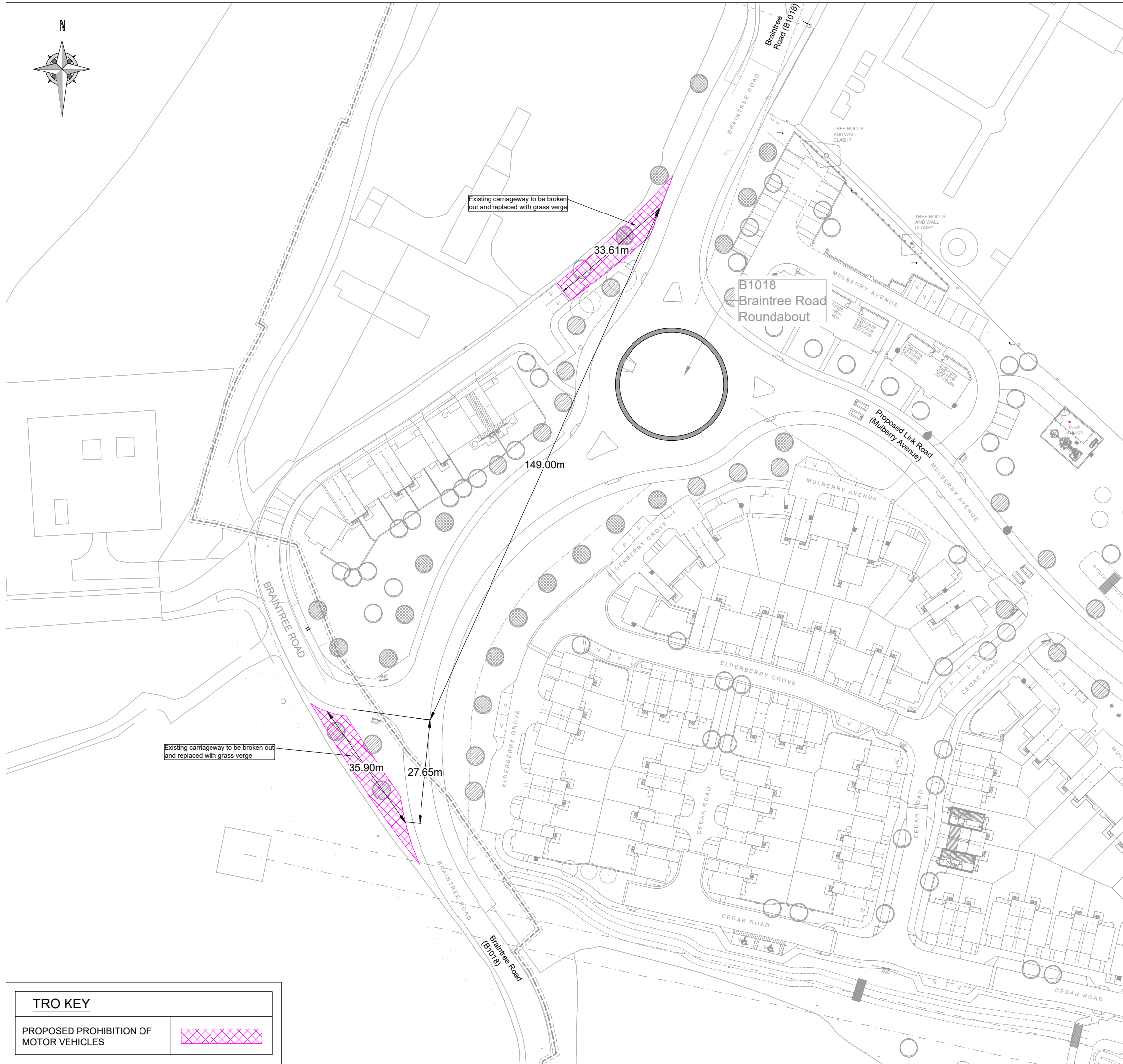
Designed by JW	Drawn by JW	Checked by JR
-------------------	----------------	------------------

Scale @ A3 1:2000	Date August 2023
----------------------	---------------------

Drawing No. 8578-308-007	Revision D	Job Ref 8578
------------------------------------	----------------------	-----------------

Status
PRELIMINARY ISSUE

Cad file P:\8578\Civil\Drawings\8578-308	Contact Office Norwich
---	---------------------------



Copyright Barter Hill Partnership. This drawing shall not be copied in whole or part without the written permission of The Barter Hill Partnership.

- Notes
- 1. PRELIMINARY DRAWING:** This drawing should be read as a PRELIMINARY issue and should NOT be used for construction under any circumstances.
 - 2. The design has been carried out in accordance with all current working drawings provided by Persimmon Homes Essex. Please refer to Persimmon Homes Essex House Type working drawings to confirm locations of all drainage outlets. Any discrepancies should be reported to the engineer immediately, prior to commencement of any works on site.**
 - 3. The highway boundary has been derived from a PDF supplied by Essex County Council and can only be used indicatively.**

E	Revised to suit Essex Highways updates	LA	JR	05/03/25
D	Updated to suit ECC S278 comments	JCR	JW	02/10/23
C	Updated to suit ECC S278 comments	JCR	JW	30/08/23
B	Updated to suit ECC S278 comments	JCR	JW	07/08/23
A	Updated to suit ECC S278 comments	JW	JR	18/05/23
-	Preliminary Issue	JW	DS	09/09/22

Rev.	Description	By	Chk.	Date
------	-------------	----	------	------

Barter Hill Partnership Limited
 Greenway Business Centre
 Greenway
 Harlow Business Park
 Essex CM19 5QE
 t: 01279 430888
 e: mail@barterhill.co.uk

15 Meridian Way
 Meridian Business Park
 Norwich NR7 0TA
 t: 01603 300360
 e: mail@barterhill.co.uk

Consulting Structural
& Civil Engineers

Client
Persimmon Homes Essex

Project
**Crossing
Braintree**

Drawing Title
**Braintree Road -
Prohibition of Motor Vehicles**

Designed by JW	Drawn by JW	Checked by JR
--------------------------	-----------------------	-------------------------

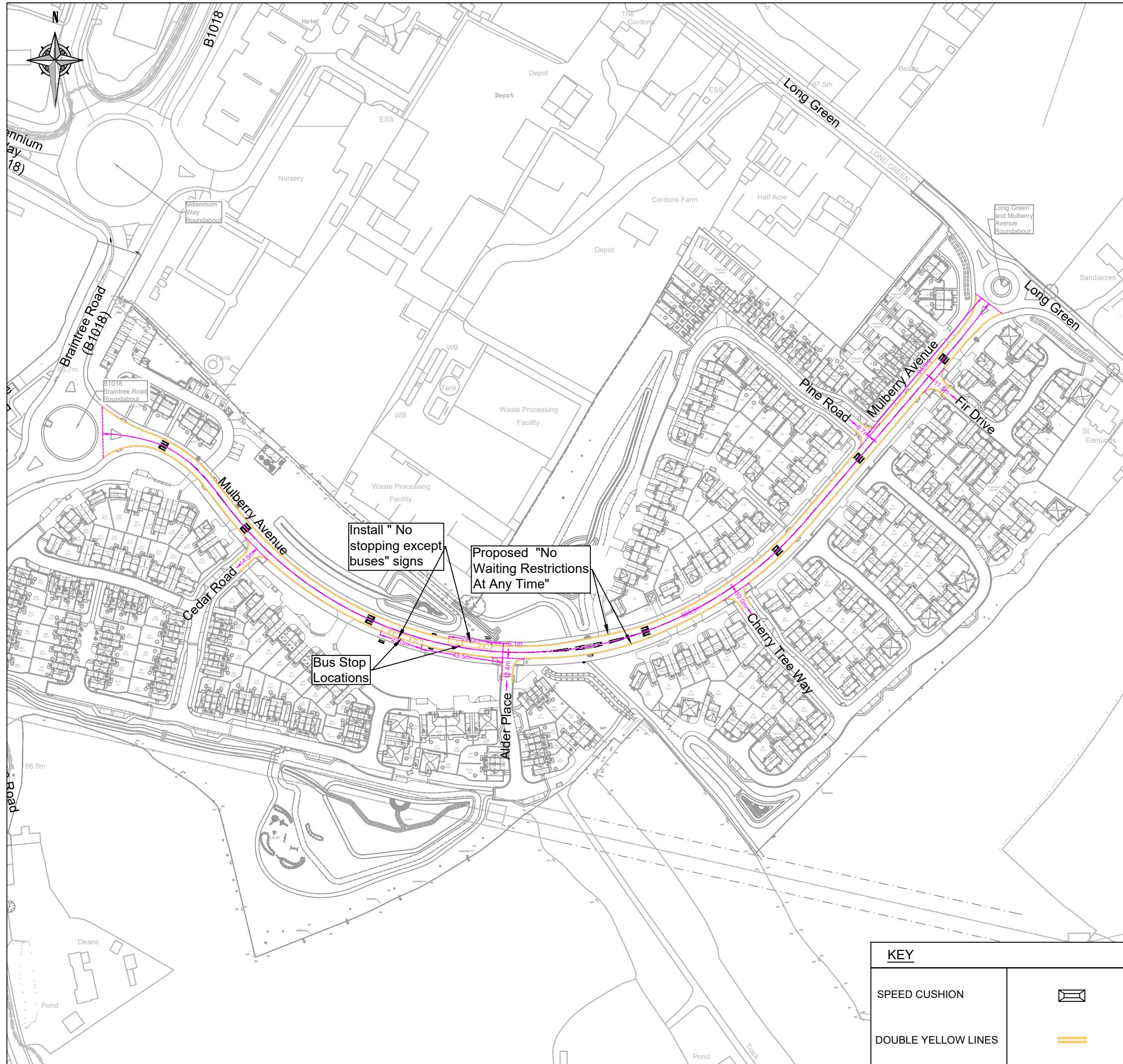
Scale @ A3 1:1000	Date September 2022
-----------------------------	-------------------------------

Drawing No. 8578-308-001	Revision E	Job Ref 8578
------------------------------------	----------------------	------------------------

Status
PRELIMINARY ISSUE

Cad file P:\8578\Civil\Drawings\8578-308	Contact Office Norwich
---	----------------------------------

TRO KEY	
PROPOSED PROHIBITION OF MOTOR VEHICLES	



Copyright Barter Hill Partnership. This drawing shall not be copied in whole or part without the written permission of The Barter Hill Partnership.

- Notes
- PRELIMINARY DRAWING:** This drawing should be read as a PRELIMINARY issue and should NOT be used for construction under any circumstances.
 - The design has been carried out in accordance with all current working drawings provided by Persimmon Homes Essex. Please refer to Persimmon Homes Essex House Type working drawings to confirm locations of all drainage outlets. Any discrepancies should be reported to the engineer immediately, prior to commencement of any works on site.
 - Drawing subject to Section 38 approval.

D	Revised to suit Essex Highways updates	LA	JR	05/03/25
C	Double yellow lines extended to Long Green roundabout	LA	JH	28/05/25
B	Updated to suit ECC comments	LA	JH	15/04/25
A	Updated to suit ECC comments	LA	JH	31/03/25
-	Preliminary Issue	LA	JWH	19/03/25

Rev.	Description	By	Chk.	Date
------	-------------	----	------	------

Barter Hill Partnership Limited

Greenway Business Centre
Greenway
Harlow Business Park
Essex CM19 5QE
t: 01279 430888
e: mail@barterhill.co.uk

15 Meridian Way
Meridian Business Park
Norwich NR7 0TA
t: 01603 300360
e: mail@barterhill.co.uk

Client
Persimmon Homes Essex

Project
Crossing, Braintree

Drawing Title
Proposed At Any Time Waiting Restrictions

Designed by LA	Drawn by LA	Checked by JWH
-------------------	----------------	-------------------

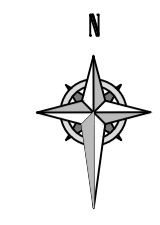
Scale @ A3 1:2000	Date March 2025
----------------------	--------------------

Drawing No. 8578-134-001	Revision D	Job Ref 8578
------------------------------------	----------------------	-----------------

Status
PRELIMINARY ISSUE

Cad file P:8578/Civils/BHP Drawings	Contact Office Norwich
--	---------------------------

KEY	
SPEED CUSHION	
DOUBLE YELLOW LINES	

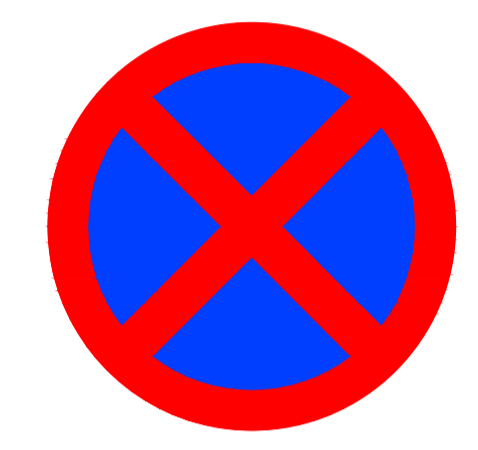


Copyright Barter Hill Partnership. This drawing shall not be copied in whole or part without the written permission of The Barter Hill Partnership.

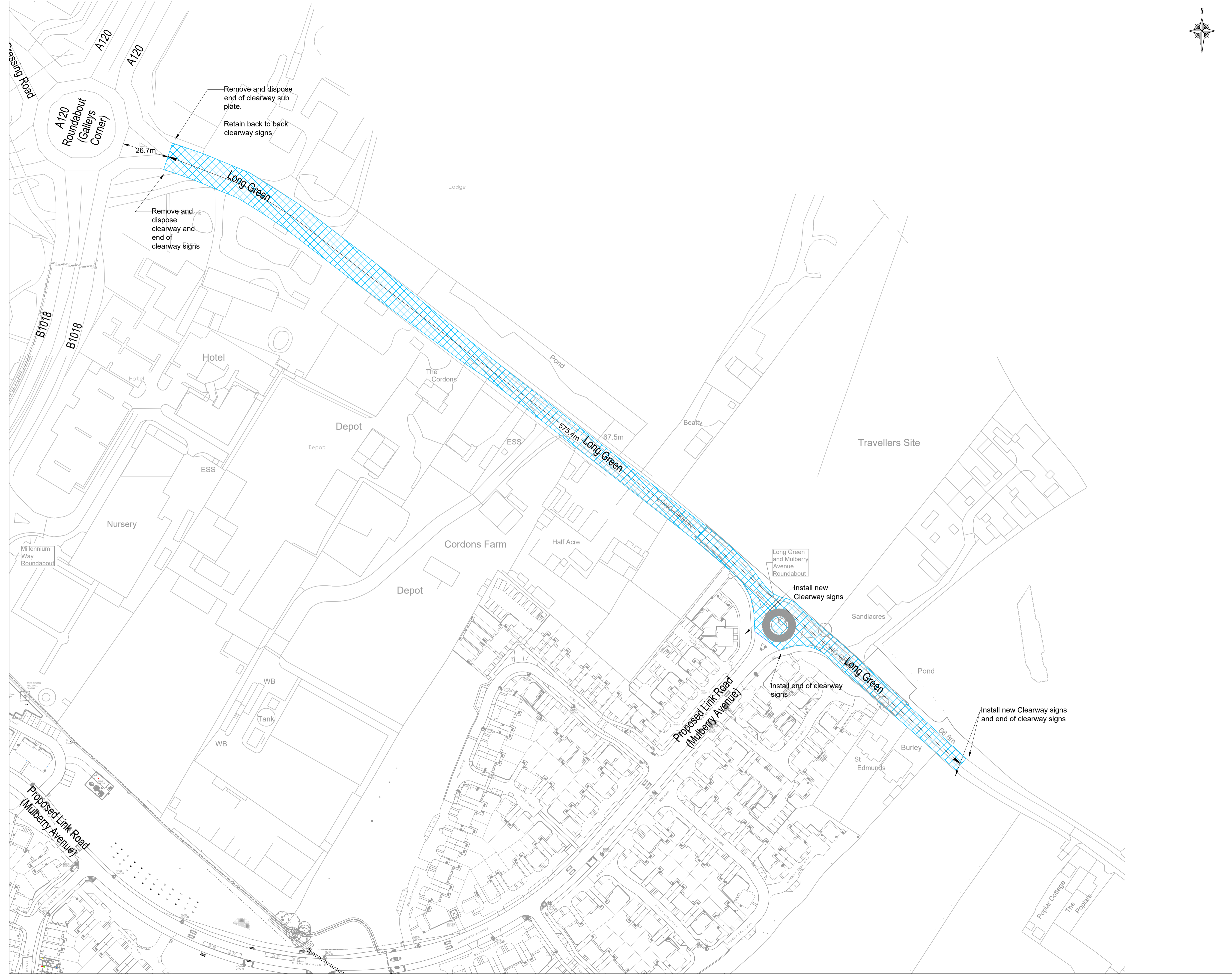
- Notes
- PRELIMINARY DRAWING:** This drawing should be read as a PRELIMINARY issue and should NOT be used for construction under any circumstances.
 - The design has been carried out in accordance with all current working drawings provided by "XXXXXXXX". Please refer to "XXXXXXXX" House Type working drawings to confirm locations of all drainage outlets. Any discrepancies should be reported to the engineer immediately, prior to commencement of any works on site.
 - Drawing subject to Section "XXXXX" approval.

TRO KEY

PROPOSED OF CLEARWAY	
----------------------	--



PROPOSED OF CLEARWAY SIGNAGE



Rev.	Description	By	Chk.	Date
------	-------------	----	------	------

barterhill Barter Hill Partnership Limited
Greenway Business Centre
Greenway
Harlow Business Park
Essex CM19 5QE
t: 01279 430888
e: mail@barterhill.co.uk

15 Meridian Way
Meridian Business Park
Norwich NR7 0TA
t: 01603 300360
e: mail@barterhill.co.uk

Client
Persimmon Homes Essex

Project
**Cressing
Braintree**

Drawing Title
Proposed Clearway - Long Green

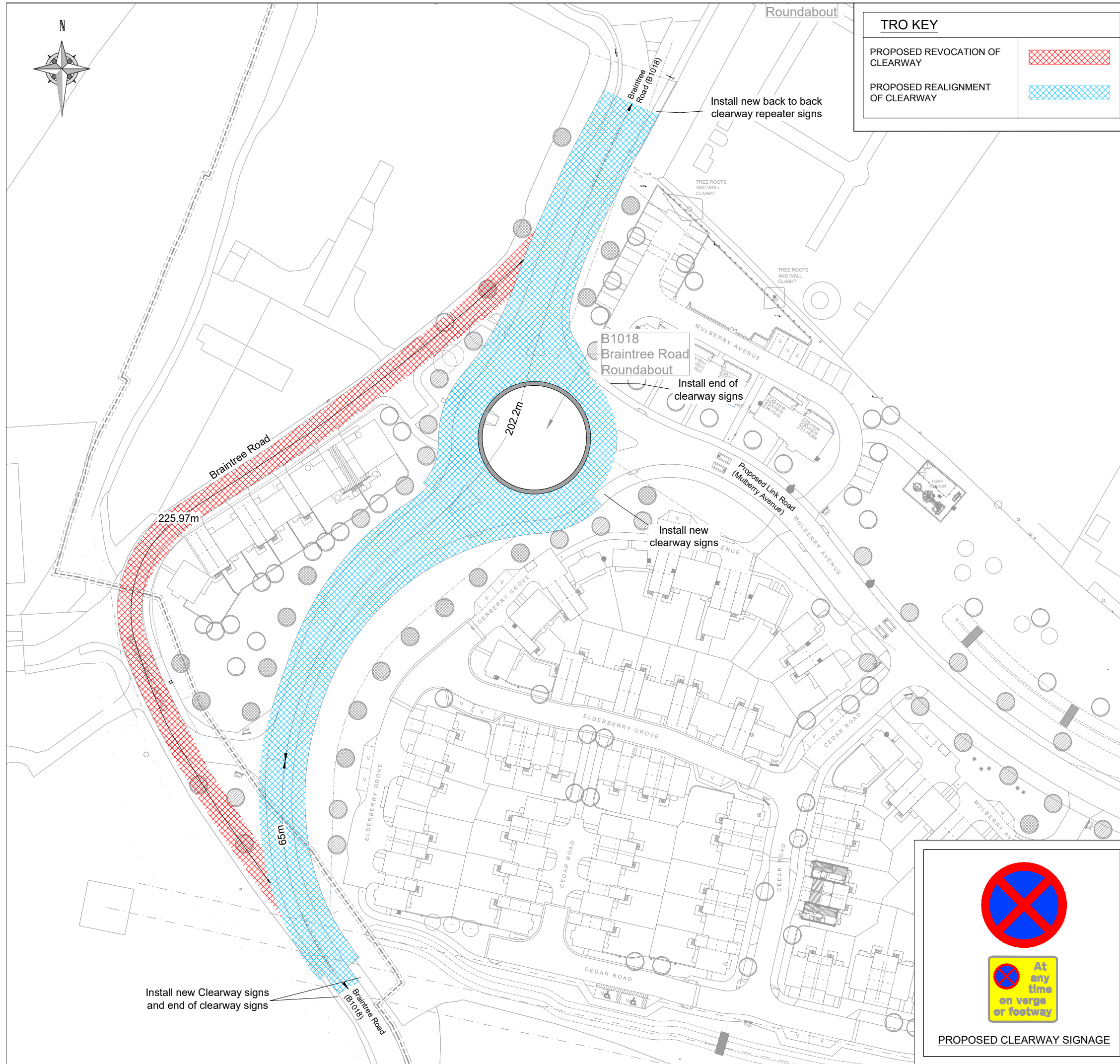
Designed by JW	Drawn by JCR	Checked by JW
-------------------	-----------------	------------------

Scale @ A1 1:1000	Date October 2023
----------------------	----------------------

Drawing No. 8578-308-009	Revision -	Job Ref 8578
-----------------------------	---------------	-----------------

Status
PRELIMINARY ISSUE

Cad file	Contact Office Norwich
----------	---------------------------



TRO KEY	
PROPOSED REVOCATION OF CLEARWAY	
PROPOSED REALIGNMENT OF CLEARWAY	

Copyright Barter Hill Partnership. This drawing shall not be copied in whole or part without the written permission of The Barter Hill Partnership.

- Notes
- PRELIMINARY DRAWING:** This drawing should be read as a PRELIMINARY issue and should NOT be used for construction under any circumstances.
 - The design has been carried out in accordance with all current working drawings provided by Persimmon Homes Essex. Please refer to Persimmon Homes Essex House Type working drawings to confirm locations of all drainage outlets. Any discrepancies should be reported to the engineer immediately, prior to commencement of any works on site.
 - The highway boundary has been derived from a PDF supplied by Essex County Council and can only be used indicatively.

G	Revised to suit Essex Highways updates	LA	JR	05/03/25
F	Updated to suit ECC S278 comments	JCR	ES	17/06/24
E	Updated to suit ECC S278 comments	JCR	JW	26/10/23
D	Updated to suit ECC S278 comments	JCR	JW	02/10/23
C	Updated to suit ECC S278 comments	JCR	JW	30/08/23
B	Updated to suit ECC S278 comments	JCR	JW	07/08/23
A	Updated to suit ECC S278 comments	JW	JR	18/05/23
-	Preliminary Issue	JW	DS	09/09/22

Rev.	Description	By	Chk.	Date
------	-------------	----	------	------

Barter Hill Partnership Limited

Greenway Business Centre
Greenway
Harlow Business Park
Essex CM19 5QE
t: 01279 430888
e: mail@barterhill.co.uk

15 Meridian Way
Meridian Business Park
Norwich NR7 0TA
t: 01603 300360
e: mail@barterhill.co.uk

Consulting Structural & Civil Engineers

Client
Persimmon Homes Essex

Project
Crossing Braintree

Drawing Title
Proposed Clearway following Realignment of Braintree Rd B1018

Designed by DS	Drawn by JW	Checked by JR
-------------------	----------------	------------------

Scale @ A3 1:1000	Date September 2022
----------------------	------------------------

Drawing No. 8578-308-005	Revision F	Job Ref 8578
------------------------------------	---------------	-----------------

Status
PRELIMINARY ISSUE

Cad file P:\8578\Civil\Drawings\8578-308	Contact Office Norwich
---	---------------------------

PROPOSED CLEARWAY SIGNAGE