

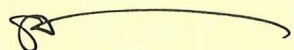
**The Essex County Council (Various Roads, Alresford, and Elmstead)
(30mph Speed Limit and 40mph Speed Limit) Order 2024**

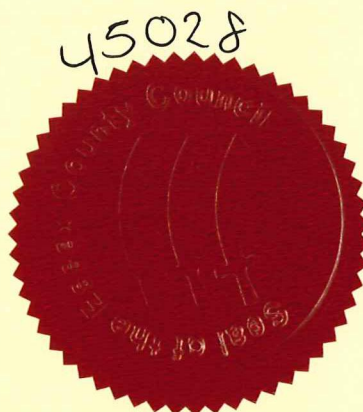
The Essex County Council in exercise of its powers under Sections 82(1) & (2)(a), 83(2), 84(1) and (2), and Part IV of Schedule 9 of the Road Traffic Regulation Act 1984 (hereinafter referred to as "the Act") (as amended), and of all other enabling powers and after consultation with the Chief Officer of Police in accordance with Part III of Schedule 9 of the Act, hereby make the following Order: -

1. No person shall cause or permit any vehicle to be driven at a speed exceeding 30 miles per hour on the said lengths of road, in the District of Tendring as specified in Schedule 1 to this Order.
2. No person shall cause or permit any vehicle to be driven at a speed exceeding 40 miles per hour on the said lengths of road, in the District of Tendring as specified in Schedule 2 to this Order.
3. No speed limit imposed by this Order applies to vehicles falling within regulation 3(4) of the Road Traffic Exemptions (Special Forces) (Variation and Amendment) Regulations 2011 when used in accordance with Regulation 3(5) of those Regulations.
4. The restriction imposed by this Order shall be in addition to and not in derogation of any restrictions or requirements imposed by any regulations made or having effect as if made under the Act or by or under any other enactment.
5. This order shall come into operation on **01 November 2024** and may be cited as The Essex County Council (Various Roads, Alresford and Elmstead) (30mph Speed Limit and 40mph Speed Limit) Order 2024.
6. 'The Essex County Council (Tendring District) (Restricted Roads) (No.4) Order 2008' is hereby revoked insofar as it relates to those length of road at Alresford and Elmstead Market.
7. 'The Essex County Council (Tendring District) (40mph Speed Limit) (No. 2) Order 2010' is hereby revoked insofar as it relates to that length of road at Alresford.

Sealed with the Common Seal of the Essex County Council this Twenty fifth Day of September Two Thousand and Twenty-Four

THE COMMON SEAL of the)
ESSEX COUNTY COUNCIL)
Was hereunto affixed in)
The presence of: -)


STACEY KNOWLES



Schedule 1

'30mph Speed Limit' and 'Restricted Roads' in the Parish of Alresford.

Road	Description
Coach Road	From its junction with Wivenhoe Road northwards to its junction with the B1027 Colchester Road to Clacton Road, approximately 324 metres.
Ford Lane	From the existing 30mph terminal signs, at a point 8 metres south of the southern boundary of 'The Old Rectory', southwards for its remaining length, approximately 1270 metres.
Wivenhoe Road	From its junction with the B1027 St. Osyth Road to a point 555 metres west of its junction with Station Road, approximately 1307 metres.

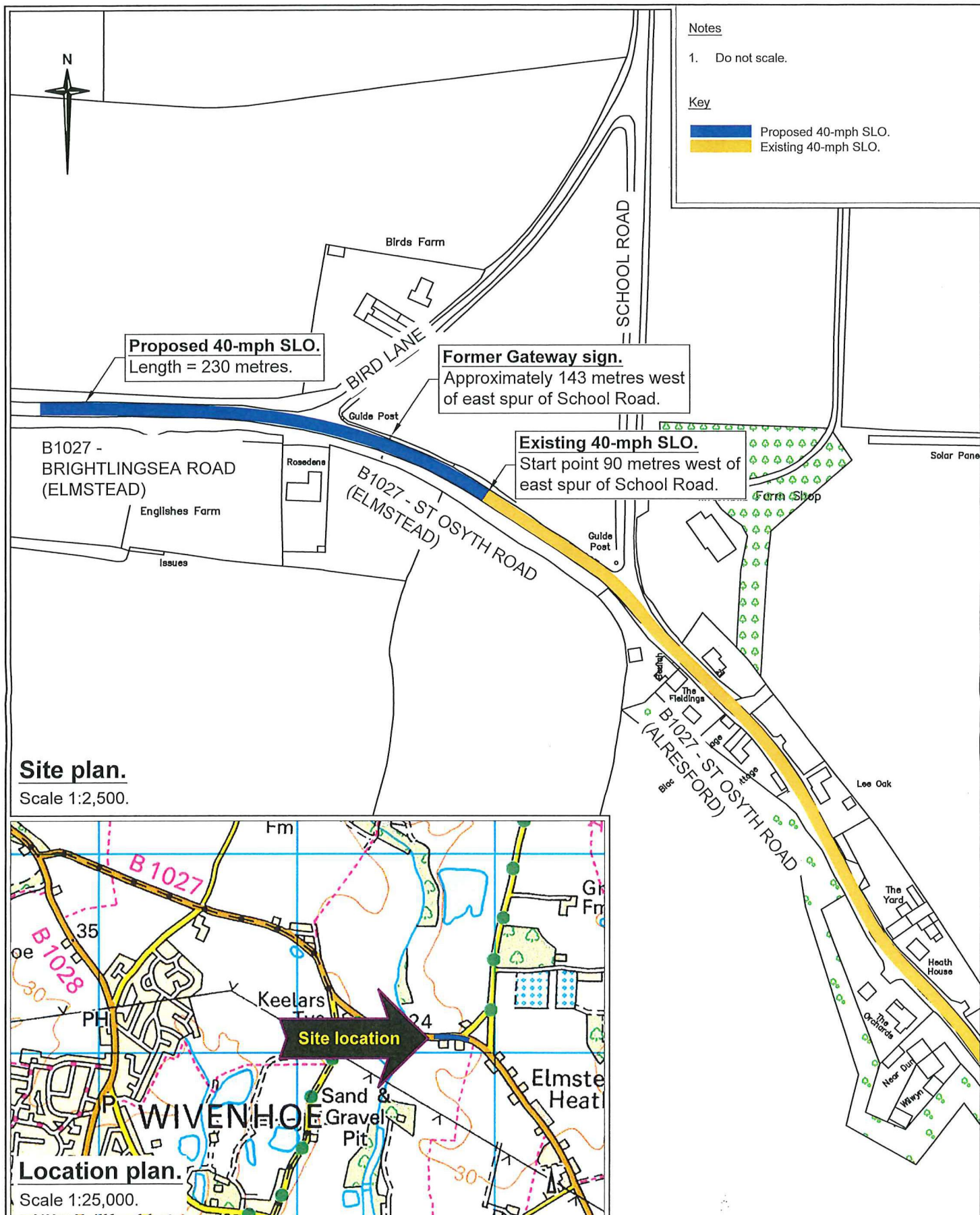
'30mph Speed Limit' and 'Restricted Roads' in the Parish of Elmstead.

Road	Description
Bromley Road	From its junction with the A133 Colchester / Clacton Road northwards and eastwards for approximately 333 metres.
A133 Colchester / Clacton Road	From a point approximately 755 metres west of its junction with Bromley Road south-eastwards to a point approximately 319 metres southeast of that junction, a total distance of approximately 1073 metres.
School Road	From its junction with the A133 Colchester / Clacton Road southwards for approximately 317 metres.

Schedule 2

'40mph Speed Limit' in the Parish of Alresford, and Elmstead (Parish Boundary approximately 51 metres from the junction of School Road).

Road	Description
B1027 Brightlingsea Road, B1027 St Osyth Road (B1027 Colchester to Clacton Road)	From a point approximately 320 metres west of its junction with School Road, in a south-easterly direction to a point approximately 240 metres southeast of its junction with Wivenhoe Road, for a total distance of approximately 2670 metres.



File Location N:\B Trans In\p\OC\Project\OC Scheme Files 2023-24\1623101190900008 to 12 - B1027 schemes from 21-2023 - Driving Resc\B1027 Advertising\div\div.dwg Last saved by Keith Mayo on 2 November 2023 Printed By Keith Mayo on 3 November 2023

Essex Highways

Essex Highways, Seax House, Victoria Road South,
Chelmsford, CM1 1QH.
Tel: 0345 6037631

© Essex County Council

© Crown copyright. All rights reserved. Essex County Council 100019502 2022



Essex County Council

**B1027 ST OSYTH ROAD, ALRESFORD
PROPOSED 40-MPH SLO
1621310119090004**

**TRO CONSULTATION DRAWING
EXTENTS OF PROPOSED SLO**

DESIGNED	DRAWN	CHECKED	REVIEWED	APPROVED
KAEM	KAEM	SJW	KAEM	SJW
DATE	DATE	DATE	DATE	DATE
07.12.21	15.02.22	16.02.22	16.02.22	16.02.22

DRAWING STATUS

FOR INFORMATION

Rev	Date	Description of revision	Drawn	Checked	Reviewed	Approved
A	Nov 23	Text changes.	KAEM	SJW	KAEM	SJW

DRAWING UNITS U.N.O.
DIMENSIONS IN MILLIMETRES
LEVELS IN METRES

SCALE AT A4 (210x297mm)
As shown

DRAWING No.
LTEN 202023 - 000 - 001

REV.
A