

REV	DETAILS	DRAWN	CHECKED	DATE
A	MINOR AMENDMENTS	JDV	SR	27.01.26

PRELIMINARY

ZEBRA CROSSING DETAILS PLAN

MERSEA HOMES LTD

BRAINTREE PHASE 1  
PANFIELD LANE Sc278 PACKAGE

4th Floor Oxford Place, 61 Oxford Street, Manchester, M1 6EQ  
0161 228 1008 e: vectos@vectos.co.uk

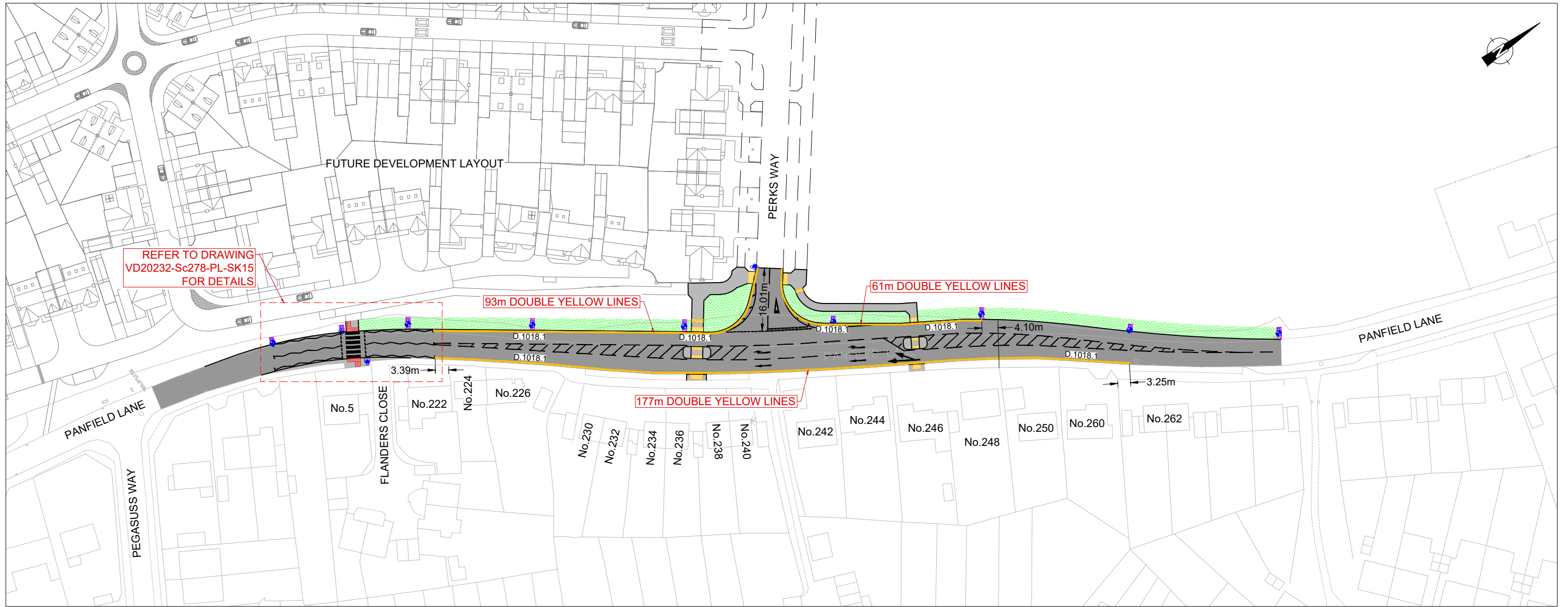


JD	SR	02.12.2024
----	----	------------

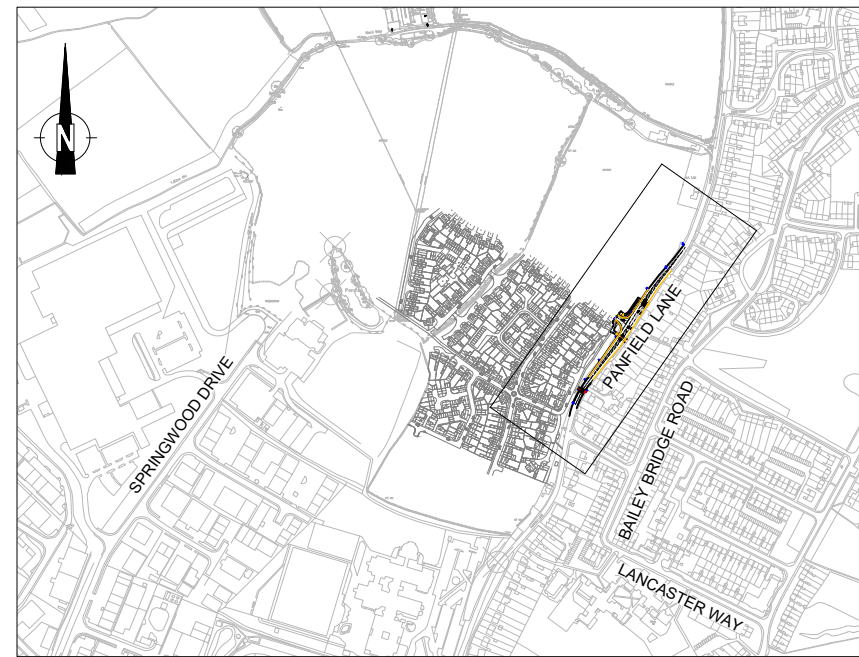
1:200 @ A3

VD20232-Sc278-PL-SK15

A



**TRAFFIC REGULATIONS ORDER PLAN**  
SCALE 1:1000 @A3



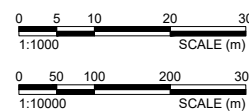
**LOCATION PLAN**  
SCALE 1:10000 @A3

- KEY**
- PROPOSED DOUBLE YELLOW ROAD MARKING
  - PROPOSED ZIG-ZAG ROAD MARKING
  - PROPOSED ZEBRA CROSSING
  - PROPOSED LIGHTING COLUMNS

REV	DETAILS	DRAWN	CHECKED	DATE
A	FIRST ISSUE	JD	SR	24.09.25
B	UPDATED TO COUNCIL COMMENTS	JD	SR	27.01.26

**NOTE:**

- ALL ADOPTABLE WORKS TO BE CARRIED OUT IN ACCORDANCE ESSEX HIGHWAYS DEVELOPMENT CONSTRUCTION MANUAL SEPTEMBER 2019.
- MATERIALS SHALL BE SAMPLED AND TESTED IN ACCORDANCE WITH DEVELOPMENT CONSTRUCTION MANUAL APPENDIX D, AND THE RESULTS MADE AVAILABLE FOR INSPECTION BY THE ENGINEER.



**CONSTRUCTION**

TRAFFIC REGULATIONS ORDER PLAN

DRAWN: JD    CHECKED: SR    DATE: 24.09.2025

CLIENT: MERSEA HOMES LTD

PROJECT: BRAINTREE PHASE 1  
PANFIELD LANE Sc278 PACKAGE

SCALE: 1:1000 @ A3



DRAWING NUMBER: VD20232-TRO-0100    REVISION: B