

ESSEX COUNTY COUNCIL

PUBLIC PATH DIVERSION ORDER 2024

FOOTPATH 12 STEEPLE BUMPSTEAD

IN THE DISTRICT OF BRAINTREE

HIGHWAYS ACT 1980 - SECTION 119

PUBLIC PATH DIVERSION ORDER

ESSEX COUNTY COUNCIL
HIGHWAYS ACT 1980 – SECTION 119
PUBLIC PATH DIVERSION ORDER
FOOTPATH 12 STEEPLE BUMPSTEAD

This Order is made by Essex County Council (“the authority”) under section 119 of the Highways Act 1980 (“the 1980 Act”) because it appears to the authority that in the interest of the owner of the land crossed by the footpath described in paragraph 1 of this order it is expedient that the line of the path should be diverted.

The landowner has agreed to defray any compensation which becomes payable in consequence of the coming into force of this order and any expenses incurred in the order making and bringing the new site of the path into a fit condition for use by the public.

Braintree District Council have been consulted as required by section 120(2) of the 1980 Act.

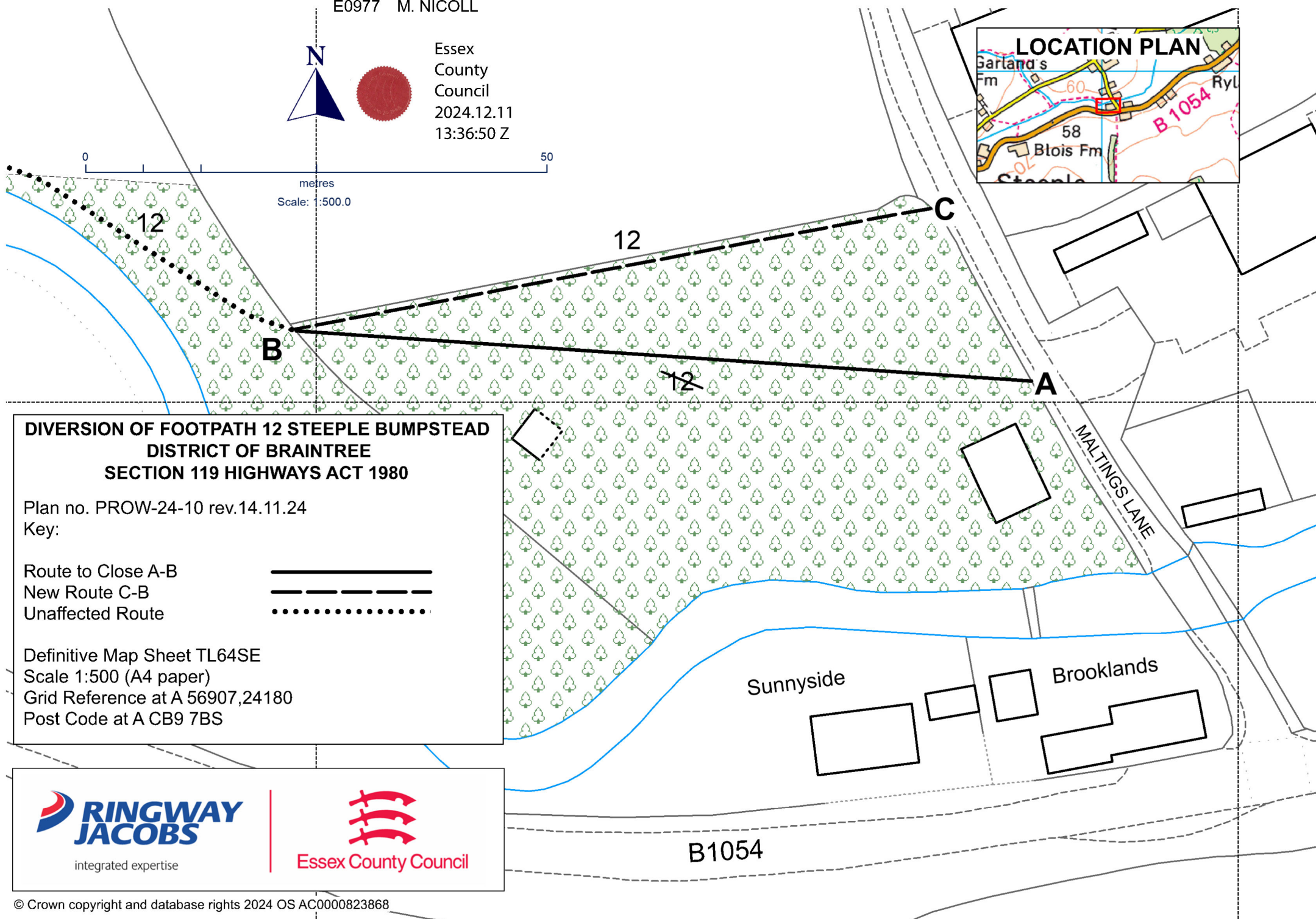
BY THIS ORDER:

- 1) The public right of way over the land situated at Brooklands known as Footpath 12 Steeple Bumpstead in the District of Braintree and shown by a bold continuous line on the order map numbered PROW-24-10 rev 14.11.24 contained in this order and described in Part 1 of the Schedule to this order shall be stopped up after 35 days from the date of confirmation of this order.
- 2) There shall at the end of 28 days from the date of confirmation of this order be a public footpath over land situated at Brooklands known as Footpath 12 Steeple Bumpstead in the District of Braintree as described in Part 2 of the Schedule and shown by a bold broken line on the order map numbered PROW-24-10 rev 14.11.24 contained in this order.



Essex
County
Council
2024.12.11
13:36:50 Z

0 50
metres
Scale: 1:500.0



SCHEDULE

(PART 1)

DESCRIPTION OF SITE OF EXISTING PATH OR WAY

A part length of Footpath 12 Steeple Bumpstead of unknown width shown by a bold continuous line on the order map commencing from point **A** at grid reference 56907,24180 heading in a north westerly direction from Maltings Lane through paddock fencing for a total distance of approximately 79 metres to point **B** at grid reference 56899,24180 where it continues unaffected.

(PART 2)

DESCRIPTION OF SITE OF NEW PATH OR WAY

A footpath being 1.5 metres in width shown by a bold broken line on the order map commencing at Point **C** at grid reference 56906,24182 located approximately 21 metres north from the aforementioned point **A** heading in a south westerly direction from Maltings Lane following an enclosed natural surfaced path for a total distance of approximately 70 metres to the aforementioned point **B** where it continues unaffected.

The COMMON SEAL of ESSEX COUNTY COUNCIL was hereunto affixed on the
Eleventh day of December 2024.

in the presence of



Michelle Nicoll
Attesting Officer



Essex
County
Council
2024.12.1
1 13:36:18
Z

E0977

Dated: 11th day of December 2024

PUBLIC PATH DIVERSION ORDER

**HIGHWAYS ACT 1980
SECTION 119**

Footpath 12 in the parish of Steeple
Bumpstead in the District of Braintree

Paul Turner
Director, Legal and Assurance

Seax House
Victoria Road South
Chelmsford
Essex
CM1 1QH

**HIGHWAYS ACT 1980
SECTION 119**

PUBLIC PATH DIVERSION ORDER 2024

FOOTPATH 12 STEEPLE BUMPSTEAD

IN THE DISTRICT OF BRAINTREE

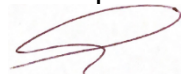
ESSEX COUNTY COUNCIL in exercise of the powers conferred upon them in that behalf, hereby confirm the foregoing Order:

THIS ORDER IS HEREBY CONFIRMED AS UNOPPOSED ORDER

The COMMON SEAL of the ESSEX COUNTY COUNCIL was hereunto affixed on the fifteenth day of April 2025

in the presence of

E1066



Michelle Nicoll
Attesting Officer

Dated: 15th April 2025

CONFIRMATION ORDER

PUBLIC PATH DIVERSION ORDER

HIGHWAYS ACT 1980 SECTION 119

Footpath 12 Steeple Bumpstead in the
District of Braintree

PAUL TURNER
Director, Legal and Assurance

Essex County Council
Seax House
Victoria Road South
Chelmsford
Essex
CM1 1QH