

**ESSEX COUNTY COUNCIL**

**PUBLIC PATH DIVERSION ORDER 2024**

**FOOTPATH 7 HOCKLEY**

**IN THE DISTRICT OF ROCHFORD**

**HIGHWAYS ACT 1980 - SECTION 119**

**PUBLIC PATH DIVERSION ORDER**

**ESSEX COUNTY COUNCIL**  
**HIGHWAYS ACT 1980 – SECTION 119**  
**PUBLIC PATH DIVERSION ORDER**  
**FOOTPATH 7 HOCKLEY**

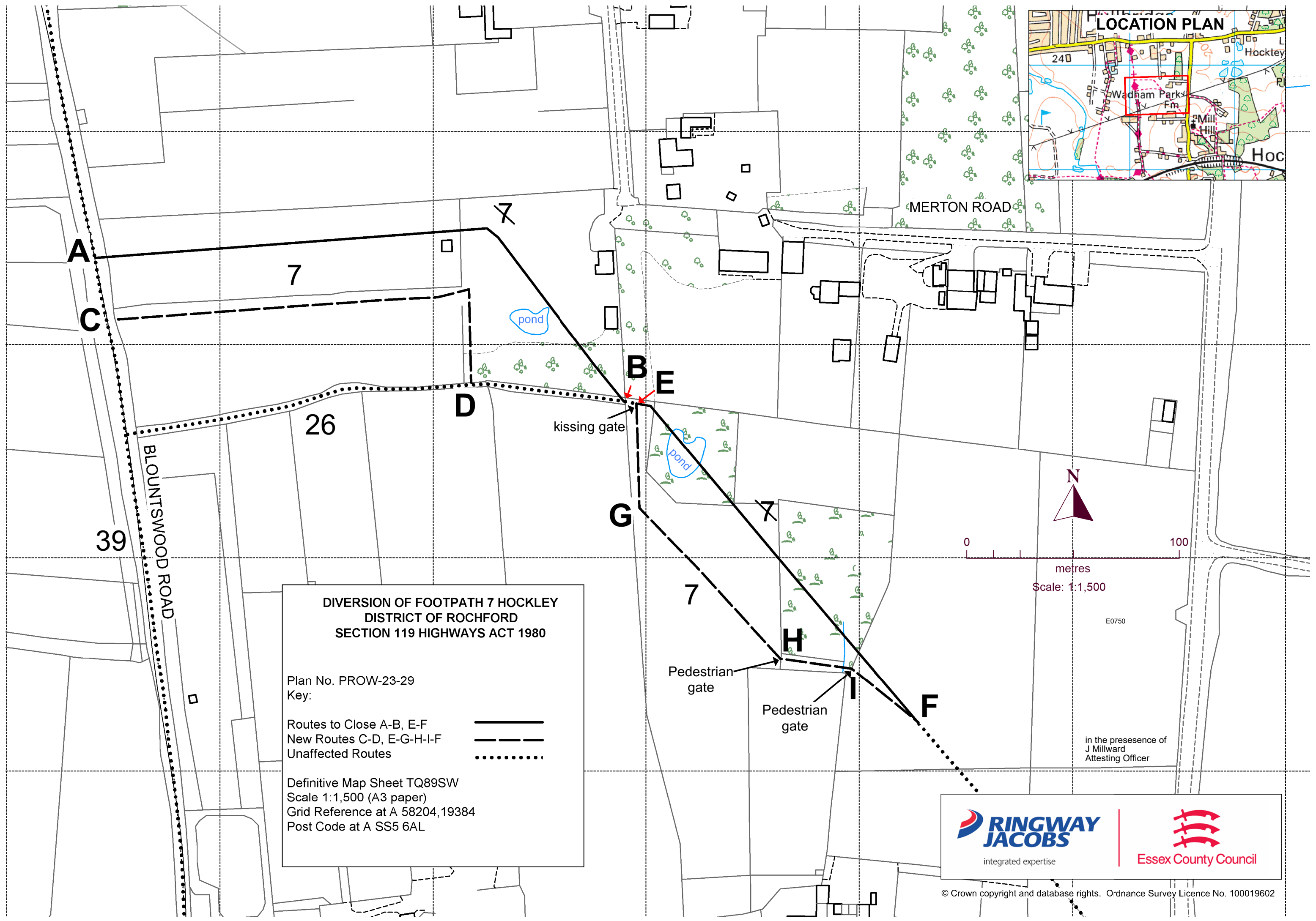
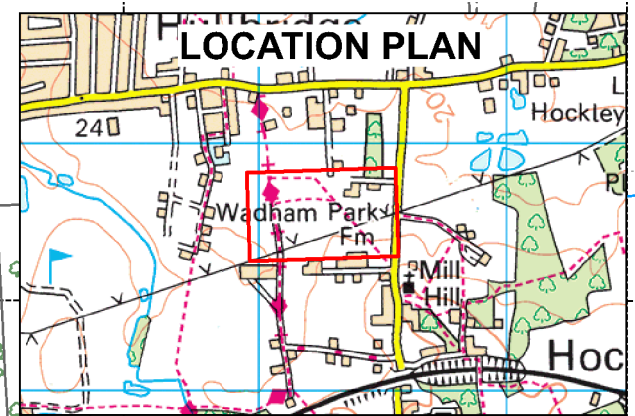
This Order is made by Essex County Council (“the authority”) under section 119 of the Highways Act 1980 (“the 1980 Act”) because it appears to the authority that in the interest of the owners of the land crossed by the footpath described in paragraph 1 of this order it is expedient that the line of the path should be diverted.

The landowners have agreed to defray any compensation which becomes payable in consequence of the coming into force of this order and any expenses incurred in the order making and bringing the new site of the path into a fit condition for use by the public.

Rochford District Council have been consulted as required by section 120(2) of the 1980 Act.

**BY THIS ORDER:**

- 1) The public right of way over land situated west of Merton Road known as Footpath 7 Hockley in the District of Rochford and shown by bold continuous lines on the order map numbered PROW-23-29 contained in this order and described in Part 1 of the Schedule to this order shall be stopped up after 35 days from the date of confirmation of this order.
- 2) There shall at the end of 28 days from the date of confirmation of this order be a public footpath over land situated west of Merton Road known as Footpath 7 Hockley in the District of Rochford as described in Part 2 of the Schedule and shown by bold broken lines on the order map numbered PROW-23-29 contained in this order.
- 3) The rights conferred on the public under this order shall be subject to the limitations and conditions set out in Part 3 of the Schedule.



**DIVERSION OF FOOTPATH 7 HOCKLEY  
DISTRICT OF ROCHFORD  
SECTION 119 HIGHWAYS ACT 1980**

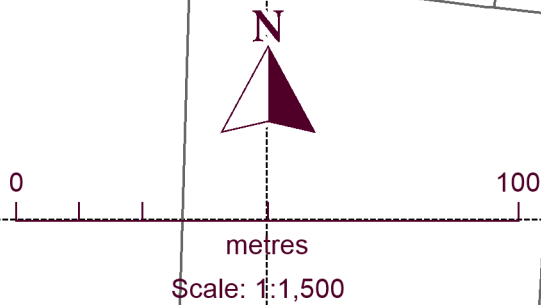
Plan No. PROW-23-29  
Key:

Routes to Close A-B, E-F     

New Routes C-D, E-G-H-I-F     

Unaffected Routes     

Definitive Map Sheet TQ89SW  
Scale 1:1,500 (A3 paper)  
Grid Reference at A 58204, 19384  
Post Code at A SS5 6AL



in the presence of  
J Millward  
Attesting Officer



integrated expertise



Essex County Council

## **SCHEDULE**

### **(PART 1)**

#### **DESCRIPTION OF SITE OF EXISTING PATH OR WAY**

(i) A part length of Footpath 7 Hockley of unknown width shown by bold continuous lines on the order map commencing from Byway 39 Hockley at point **A** at grid reference 58204,19384 running in an easterly then south easterly direction passing through a private garden for a total distance of approximately 287 metres to point **B** at grid reference 58228,19377.

(ii) A further part length of Footpath 7 Hockley of unknown width approximately 5 metres east of the aforementioned point **B** commencing at point **E** at grid reference 58229,19377 continuing in a south easterly direction passing through a pond then a boundary fence and mature upgrowth for a total distance of approximately 200 metres to point **F** at grid reference 58242,19363 where it continues unaffected.

### **(PART 2)**

#### **DESCRIPTION OF SITE OF NEW PATH OR WAY**

(i) A footpath being 2 metres in width shown by bold broken lines on the order map commencing at point **C** at grid reference 58205,19381 approximately 30 metres south of the aforementioned point **A** running in an easterly direction along the southern side of a mature hedge boundary then continuing in a southerly direction along the eastern side of the mature hedge boundary for a total distance of approximately 210 metres to point **D** at grid reference 58221,19378.

(ii) A further part of footpath being 2 metres in width approximately 78 metres east of the aforementioned point **D** commencing at the aforementioned point **E** passing through a kissing gate in a southerly direction for a distance of approximately 49 metres to point **G** at grid reference 58229,19372 then continuing in a south easterly direction for a further distance of approximately 97 metres and passing through a pedestrian gate at point **H** at grid reference 58236, 19365. The path then continues in an easterly direction for a further distance of approximately 34 metres passing through a further pedestrian gate at point **I** at grid reference 58239,19364 then continuing in a south easterly direction for a final distance of approximately 40 metres to the aforementioned point **F** where it continues unaffected.

[PART 3]

LIMITATIONS AND CONDITIONS

<p><b>1.</b> At the point marked <b>E</b> on the Order Map (PROW-23-29) located in the north western corner of the field, (grid reference 58229,19377)</p>	<p>The right of the landowner to install and maintain a kissing gate subject to its removal should the limitation become unnecessary whereby an available width shall remain of 2 metres, this being the dedicated width of the path as specified in Part 2 of the Schedule</p>
<p><b>2.</b> At the point marked <b>H</b> on the Order Map (PROW-23-29) directly adjacent to the southern side of the field gate, (grid reference 58236, 19365)</p>	<p>The right of the landowner to install and maintain a pedestrian gate subject to its removal should the limitation become unnecessary whereby an available width shall remain of 2 metres, this being the dedicated width of the path as specified in Part 2 of the Schedule</p>
<p><b>3.</b> At the point marked <b>G</b> on the Order Map (PROW-23-29) located in the southern corner of the field, (grid reference 58229,19372)</p>	<p>The right of the landowner to install and maintain a pedestrian gate subject to its removal should the limitation become unnecessary whereby an available width shall remain of 2 metres, this being the dedicated width of the path as specified in Part 2 of the Schedule</p>

The Common Seal of Essex County Council was hereunto affixed on the twelfth day of January 2024.

E0750

in the presence of



Jacqueline Millward  
Attesting Officer

Dated: 12th day of January 2024

**PUBLIC PATH DIVERSION ORDER**

**HIGHWAYS ACT 1980  
SECTION 119**

Footpath 7 Hockley in the District of  
Rochford

Paul Turner  
Director, Legal and Assurance

Seax House  
Victoria Road South  
Chelmsford  
Essex  
CM1 1QH