

EXTRACT FROM THE DEFINITIVE
MAP OF PUBLIC RIGHTS OF WAY
Scale 1:10,000
Relevant Date 1st July 2002
with any subsequent changes marked



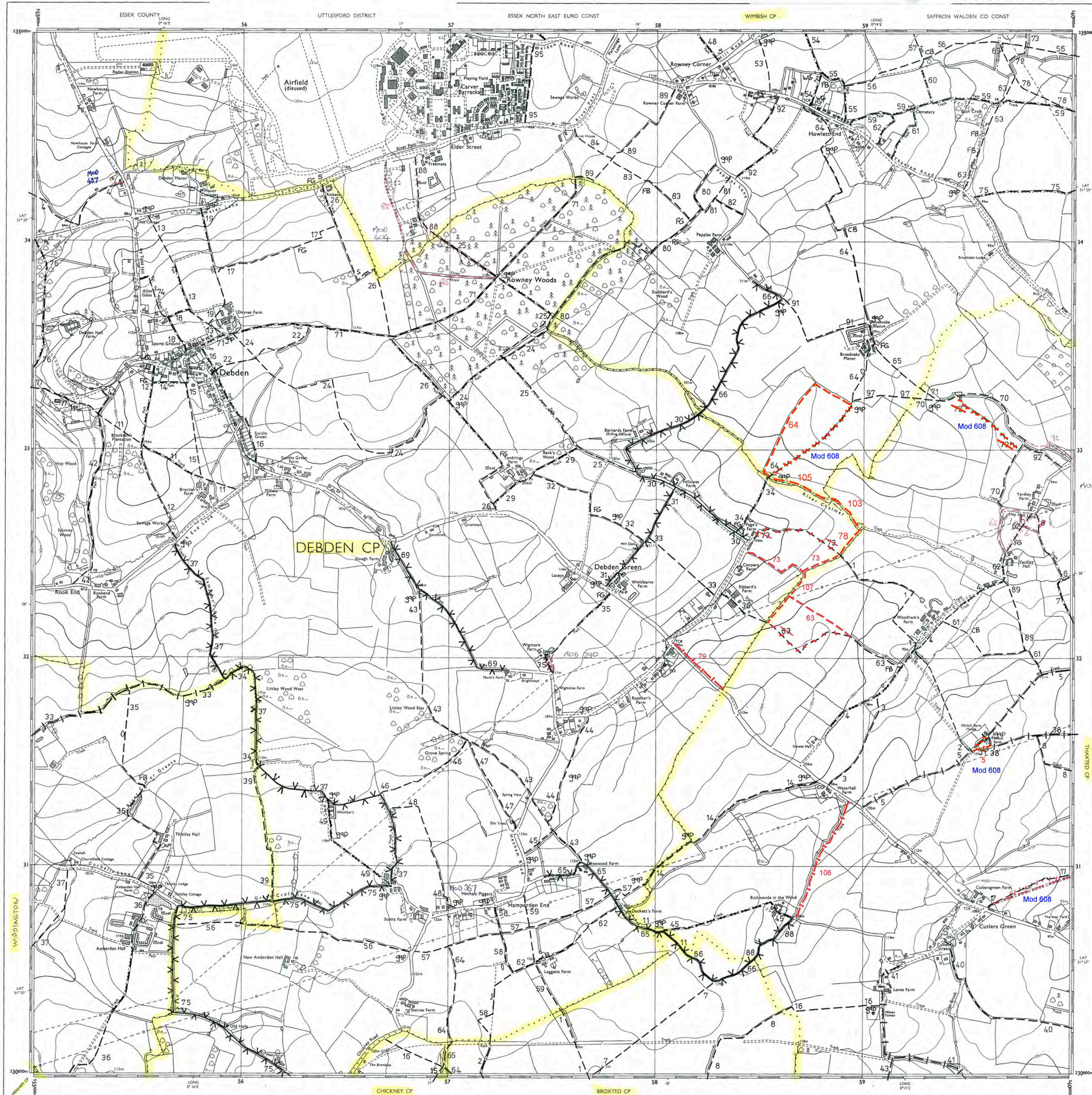
DOCUMENT 12

2002 DEFINITIVE MAP
WORKING COPY

HEIGHTS IN METRES

ORDNANCE SURVEY

SHEET TL 53 SE



TL 53 SE

COUNTY OF ESSEX

THE WILDLIFE AND COUNTRYSIDE ACT 1981

**STATEMENT ACCOMPANYING THE DEFINITIVE MAP
(RELEVANT DATE – 1 JULY 2002)**

PARISH COUNCIL OF DEBDEN

KEY TO CLASSIFICATIONS

FP = FOOTPATH
BR = BRIDLEWAY
BYW = BYWAY

Uttlesford District
Definitive Statement for : **DEBDEN** **DEFINITIVE**
RELEVANT DATE 01/07/02

Map No. & Square	Path No.	Class.	Description	Details of changes since the previous Definitive Map	Remarks*
53SE	11	FP	From FP77 by the church leading south-eastwards, crossing FP42, then crossing FP12 at the north-east corner of Brocton's Plantation, to the road near Miller's Farm.		
53SE	12	FP	From Debden School in a southerly direction crossing footpath 11 to meet BYW37 at the northern end of Sampson's Lane.		
53SE	13	FP	From the Saffron Walden-Thaxted road east of the Fox (PH) in a southerly and south easterly direction to join the road west of Deans.		
53 SE	14	FP	From its junction with FP12 easterly to FP15.		
53 SE	15	FP	From Debden Village east of the school in a southerly direction passing its junction with FP14 to meet FP11.		
53SE	16	FP	From Orchard Close in a north-westerly direction passing its junction with footpath 22 to the road west of Deans.		
53SE	17	FP	From its junction with footpath 19 north of Deans, in a north-easterly direction to meet footpath 26.		

* This column includes limitations or conditions (if any) affecting the right of way, in addition to such stile, footbridges, field gates, etc., as are indicated on the Map

Uttlesford District
Definitive Statement for : **DEBDEN** **DEFINITIVE** RELEVANT DATE 01/07/02

Map No. & Square	Path No.	Class.	Description	Details of changes since the previous Definitive Map	Remarks*
53SE	18	FP	From the road opposite the Congregational Chapel in a north-westerly direction to a point east of the Rectory thence easterly to join path No. 13.		
53SE	19	FP	From Water Lane in a southerly direction passing its junction with footpath 17 to a point north of Deans the path now turns south west to join path No. 13.		
53SE	22	FP	From the road south of the Almshouses in a north-easterly direction crossing FP16 to the road leading to Rowney Wood.		
53SE	24	FP	From the road opposite Deans leading south-eastwards with unspecified width, crossing FP22, to the stream on the southern side of OS field 3800. Then crossing the stream and leading north-eastwards with a width of not less than 2 metres, along south bank of stream, in OS field 1200 to join FP26. Then reverting to unspecified width and leading south-eastwards along FP26 for a short distance to the southern tip of Rowney Wood. Then north-eastwards along the boundary of the wood to the parish boundary where it continues as FP80 in Wimbish.		

* This column includes limitations or conditions (if any) affecting the right of way, in addition to such stiles, footbridges, field gates, etc., as are indicated on the Map



Debden village car park:

